

Transportation

Transportation Services is a division of the Public Works and Utilities Department. Transportation systems related budgets include the County Road Fund, Airport, Pierce County Ferry Services, Public Works Construction Fund, Equipment Rental and Revolving, and the Roads portion of the Second REET Fund.

Major Accomplishments in 2003

During 2003, the Transportation **Engineering Division** in the County Road Fund completed the design and advertisement of 20 different construction projects: 9 road; 3 bridge; 6 traffic signals, and 2 ferry system. In addition, activities continued on 14 construction projects started in 2002. Approximately \$22 million will be spent in 2003 on design, right-of-way acquisition and construction. A tremendous amount of background work went into each one of the projects in the form of gathering survey information, acquiring right-of-way, providing review and environmental documentation and monitoring of water quality and environmental mitigation items associated with each of the projects. Engineering Division staff also managed several large construction projects during 2003. Significant progress was made on a number of projects including: the roadway and bridge associated with the section of the Lake Tapps Parkway East project in the vicinity of East Valley Highway East; the Nisqually road and bridge project; the Brookdale Stormwater Pond which will play a vital role in the future construction of Canyon Road between 160th St E and 116th St East, and; the final phase of Canyon Road between 116th Street East and 106th St East. Staff also supervised the release of the Final Environmental Impact Statement for the Cross Base Highway project; commenced work on the Rhodes Lake Road Corridor Study, the preliminary design for the Canyon Road Northerly Extension, and the final design of the Lake Tapps Parkway (from Sumner -Tapps Highway to 9th Street/182nd Avenue East. In addition to our in-house design work, the Consultant Resources & Environmental Section administered 51 individual Personal Services Agreements (PSA) with 30 consultant engineering firms (some firms have more than one PSA for separate projects). Out of those 51 individual PSA's, 45 task work orders were assigned in 2003 representing nearly \$7 million in scoped work.

In addition to providing daily ferry service to Ketron and Anderson Island, the **Ferry System** staff accomplished several projects in 2003. Two contracts were awarded: a contract to dredge under the Anderson Island Ferry Landing Pontoon; and a contract to paint, replace rotted wood, and extend the roof overhang at the Anderson Island Waiting Facility. Staff also assisted in the development of the Waterborne Transportation Study for the County's Ferry System. The study makes several recommendations for operating the ferry system in the coming years and a summary of the results can be found at the County ferry website at www.co.pierce.wa.us/ferry. Staff also applied for and received federal monies for replacement of the pontoon and apron lifting system at Anderson Island. Design will begin as soon as the agreement with the State is completed with construction slated for late 2004 or early 2005. Staff also responded quickly to coordinate emergency repairs to the Anderson Island ferry landing which were required to correct damage that occurred as a result of the significant storm in October, 2003.

As in previous years, the **Program Development** Division was very active in 2003. One of its more significant accomplishments was the completion and submittal to the County Executive and Council of the countywide Traffic Impact Fee (TIF) Program. The TIF Program had two public hearings before the Council Public Works Committee and was continued until 2004. In addition, a new concurrency system for traffic was submitted to the County Council as part of the annual updates to the County's Capital Facility Plan.

Significant accomplishments of the Division's Transportation Programming Section included: the completion and adoption of the Six-Year Transportation Improvement Program, the Fourteen-Year Ferry Program and the Capital

Facilities Plan; the submittal of 12 grant applications for state and federal funding; the preparation, tracking and updating of approximately 275 project matrices; the completion of 45 project cost estimates; and the administration of \$27.6 million in federal grants, \$39.6 million in State Transportation

Section Contents	
Airport Fund.....	291
County Road Fund.....	295
Equipment Rental and Revolving.....	301
Pierce County Ferry Services	305
Public Works Construction Fund	307
Second REET Fund - Roads	315

Transportation

Improvement Board (TIB) grants, and \$9.5 million in Rural Arterial Program and other grants. Staff successfully secured a grant for \$3.3 million from the TIB and a loan for \$7.0 million from the Public Works Trust Fund. In addition, staff participated in negotiations and prepared interlocal agreements with five local agencies to coordinate efforts and funding responsibilities associated with capital improvement projects.

The Division was also very active in coordinating with Washington State Department of Transportation (WSDOT) on mutual projects. Specifically, coordination efforts with WSDOT concerning impacts to County roads associated with construction of the Tacoma Narrows Bridge took considerable staff time and effort during 2003.

Significant accomplishments of the Division's Transportation Planning Section in 2003 included the council adoption of the "transportation elements" of the South Hill and Frederickson Community Plans. Staff also initiated work on the transportation planning sections of the Mid County and the Graham Community Plans. This section also continued to work with employees, employers, jurisdictions, and agencies affected by the Commute Trip Reduction Law.

In 2003, the **Road Operations** Division continued to reevaluate its operations and mission in light of the adoption of significant regulatory changes including the Endangered Species Act requirements, the Labor and Industries safety and traffic control requirements, and the Department of Ecology street waste processing and reclamation requirements. As a direct result of these changes, the Road Operations Division undertook a review in 2003 of its Maintenance Function Standards to determine whether the standards continued to be appropriate. The eighty-two separate maintenance standards define the volumes of labor, equipment and materials that are required to produce a unit of each maintenance and emergency response action performed by road crews. A team of Road Operations staff utilized all available data including a comprehensive assessment of historic resource usage and melded that information with a forecast of future needs to reshape all of the Maintenance Function Standards. This effort produced results that included the development of planning and budgeting tools that precisely project future requirements and allowed the Division to further utilize available resources to enhance service delivery.

Also in 2003, the Road Operations Division converted a fully funded vacant budget position into the position of Road Operations Training Coordinator. This position will manage the Division's operational and safety training programs for all members of the Road Operations team. Already as a direct result of creating this position, 50% of our staff has completed job skill enhancement, Endangered Species Act trainings, and L & I safety training. Also, our new supervisory staff team has completed 75% of the Pierce County Organizational and Developmental Leadership and Supervisory Training program.

2003 also saw a substantial increase in the street waste processing requirements. An important part of the Road Operations mission is to provide maintenance and emergency response services that are environmentally responsible and cost effective. As a result of the increase in the requirements, Road Operations developed a street waste processing plan that combines re-use and recycling options with a responsible reclamation and disposal process. This "cradle to grave" tracking process has produced data that allows Road Operations to accurately incorporate these costs back into the maintenance functions that originally generated each specific street waste product. The costs of each unit of waste (ton or cubic yard) will be processed through a revolving fund which will generate valuable budget information, allow for better prioritization of work, and the ability to charge contract customers accurately for the production of street waste materials that are generated from the contract services.

Also in 2003, the Road Operations Division completed several significant maintenance projects as part of its on-going mission to preserve and maintain the road infrastructure of Pierce County. Significant projects include: the County-wide overlay program which involved the overlay of 5.6 centerline miles of roadway; the application of 131 miles of chip seal surface treatment; the rehabilitation of the City of Lakewood's 2002 chip seal program; the initiation of a comprehensive summer ditching program, and; the installation of 43 drywells to mitigate localized flooding and water-over-road issues.

And finally, after over three years of hard work and negotiations, Road Operations and the Regional Road Maintenance Forum were successful in attaining Section 4d coverage for Pierce County under the Endangered Species Act. Road Operations' participation in the Forum was critical in this effort and the designation represents a significant recognition that the County road maintenance operations are in compliance with the Federal Endangered Species Act.

Transportation

The **Traffic** Division provided continuing comprehensive traffic maintenance and traffic engineering services throughout the County road system, and provided contracted traffic maintenance services for several cities in 2003. The Traffic Operations Center also provided contracted traffic signal maintenance services for the cities of Lakewood, University Place, and Edgewood. The Division also provided roadway paint striping for Lakewood, University Place, Edgewood, Steilacoom, Fife, Orting, and Buckley. The Division also accomplished 2,030 line miles of paint striping; 5,260 marking units; repaired over 25,000 traffic signs; and conducted over 120,000 sign inspections. In maintaining traffic signal and illumination systems, the Division responded to 950 signal call-outs; performed 900 preventive signal system checks; and conducted routine relamping of almost 4,000 signal indications.

In addition to providing development traffic impact analysis review and related support to Pierce County's Planning and Land Services Department, the Division also provided traffic engineering and design services which led to several operational enhancements, such as nine new traffic signals that were put into operation (five that were constructed as stand-alone intersection projects and four that were part of larger road construction projects). Also, based on traffic engineering studies conducted by the Division, three intersections were converted to all-way stops, signal phasing changes were implemented to accommodate left turn movements at two intersections, and an intersection on the Gig Harbor peninsula and a curve on South Hill were reconstructed to enhance traffic flow and safety. And, a project to convert all the County flashing intersection beacons to LED displays was completed, and three permanent traffic counting stations were also installed in 2003.

In addition to performing its primary duties of procurement, maintenance, and training related to the Equipment Services Division (ESD) equipment fleet, there were three major accomplishments in the ESD, **Equipment Rental and Revolving**. First, a large underutilized conference room was updated and transformed into a shared resource for ESD and other County departments/divisions to use. Second, a canopy cover was installed over an existing equipment wash area which allowed connection to the sanitary sewer system and thus improved water quality. Third, ESD outsourced fuel delivery for the Lakewood Road Maintenance shop. The provider fuels equipment on-site during non-work hours, thus reducing equipment down time and overall fueling

DEPARTMENT BUDGETS

Department Name	2003 Budget	2004 Budget	Absolute Change	Percent Change
Airport Fund	\$ 583,880	\$ 585,610	\$ 1,730	0.3 %
County Road Fund	59,328,570	66,830,370	7,501,800	12.6
Equipment Rental & Revolving	12,371,040	10,240,150	(2,130,890)	(17.2)
Pierce County Ferry Services	2,615,250	7,211,370	4,596,120	175.7
Public Works Construction Fund	51,845,000	38,266,000	(13,579,000)	(26.2)
RID Construction Fund	28,040	—	(28,040)	(100.0)
Second Reet Fund - Roads	7,501,300	11,044,060	3,542,760	47.2
Vehicle License Fee Fund	3,754,000	—	(3,754,000)	(100.0)
Total Transportation	\$ 138,027,080	\$ 134,177,560	\$ (3,849,520)	(2.8) %

Transportation

Airport Fund

Enterprise Fund

The mission of the Pierce County Airport (Thun Field) is to support general utility aviation operations and maximize fiscal self-supporting capabilities.

Departmental Summary: The Airport Fund provides for the operation, maintenance, and capital improvements at Pierce County Airport - Thun Field. This fund's goal is to be self-supporting through user fees and tenant charges.

The Airport is classified as General Aviation by the Federal Aviation Administration. The Airport's design level is General Utility, Stage I which supports primarily the personal and recreational needs and secondarily the business needs of aviation in southeastern Pierce County.

Budget Highlights: The proposed 2004 Airport budget total is almost the same as the 2003 budget. The 2004 Budget includes the following:

- a) Inflationary cost increases for on-going operations;
 - b) \$22,000 for administering the new Thun Field Advisory Committee; and
 - c) Capital Improvements:
 - land acquisition for the realignment of the north portion of west taxiway (grant match) \$84,400
 - miscellaneous infrastructure enhancements 35,000
 - tree removal and grading in the east airport buffer 25,000
 - aviation rights acquisition north of airport (grant match) 6,000
 - perimeter fencing 19,200
- \$169,600

Performance Measure

- 1) Design, contract for and remove trees along the east property boundary of the Pierce County Airport which will enhance the safety of air operations. (Goal A)

FUNDING SOURCES

	2001 Actual	2002 Actual	2003 Budget	2004 Budget	Absolute Change	Percent Change
Est Use of Begin Fund Balance	\$ —	\$ —	\$ 104,500	\$ 63,270	\$ (41,230)	(39.5) %
Taxes	137,817	133,484	110,000	144,000	34,000	30.9
Intergovernmental Revenue	86,296	2,532,624	—	—	—	—
Miscellaneous Revenue	336,106	355,522	369,380	378,340	8,960	2.4
Other Financing Sources	172,046	(1,511)	—	—	—	—
Total	\$ 732,265	\$ 3,020,119	\$ 583,880	\$ 585,610	\$ 1,730	0.3 %

Airport Fund

EXPENDITURES

	2001 Actual	2002 Actual	2003 Budget	2004 Budget	Absolute Change	Percent Change
Salaries & Wages	\$ 70,679	\$ 75,227	\$ 81,700	\$ 84,770	\$ 3,070	3.8 %
Personnel Benefits	24,583	18,615	24,560	26,470	1,910	7.8
Supplies	6,218	12,568	5,400	8,570	3,170	58.7
Other Services & Charges	254,908	255,053	229,190	247,570	18,380	8.0
Intergovernmental Services	2,922	3,373	3,030	3,500	470	15.5
Capital Outlays	175,469	(28,775)	203,000	169,600	(33,400)	(16.5)
Debt Service-Principal	—	—	13,740	32,720	18,980	138.1
Interest	4,641	5,731	23,260	12,410	(10,850)	(46.6)
Total	\$ 539,420	\$ 341,792	\$ 583,880	\$ 585,610	\$ 1,730	0.3 %

STAFFING SUMMARY

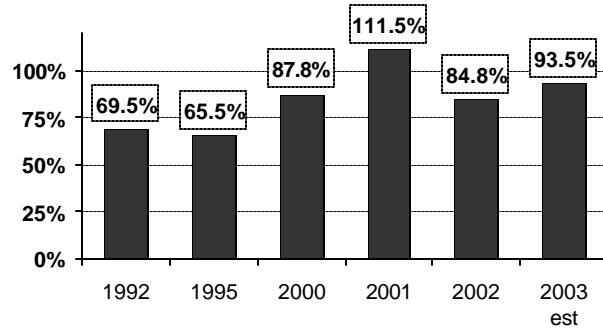
	1999 FTE	2000 FTE	2001 FTE	2002 FTE	2003 FTE	2004 FTE
Airport Operations Mgr	1.00	1.00	1.00	1.00	1.00	1.00
Facilities Maint Tech	1.00	0.50	0.60	0.60	0.60	0.60
Total	2.00	1.50	1.60	1.60	1.60	1.60

WORKLOAD SERVICE DATA

	Unit of Measure	1999 Actual	2000 Actual	2001 Actual	2002 Actual	2003 Estimate	2004 Estimate
Tiedowns rented	Tiedowns	48	48	48	48	48	48
Hangar space rented	Spaces	50	50	50	50	50	50
Take offs and landings	Occurrence	95,500	100,000	100,000	105,000	108,000	111,000

BUDGET RATIOS

Extent of Self-Support



❖ From 1992 to 2003 the extent of self-support increased by 35%.

Airport Fund

County Road Fund

Special Revenue Fund

The mission of Transportation Services is to provide transportation infrastructure including planning, design development, construction, contract administration, maintenance and operations, ferry and airport operations, and equipment services.

Departmental Summary:

The Transportation Services Division of the Public Works and Utilities Department plans, improves, and maintains the transportation system. Major revenue sources of the Road Fund are dedicated property taxes and state allocated motor vehicle fuel excise taxes. The transportation system consists of 1,500 miles of roadway, 150 bridges, 60 traffic signals, and a ferry operation. Drainage facilities keep the roadways free of water. Shop facilities stockpile materials and garage the 200 road maintenance vehicles necessary for keeping the roads open and safe. Projections indicate that the highway system must handle a 50% increase in vehicle miles traveled over the next 10 years to accommodate economic development in the County. The current value of the system is over \$1 billion, or \$1,500 per capita.

The Transportation Services Division employs staff to plan, build and maintain a safe and efficient road network for the citizens of Pierce County. The Department is organized into two operating divisions: Engineering and Maintenance. The Engineering Division's responsibilities include planning, designing and constructing road and bridge projects, establishing standards for roadway construction, and maintaining the County Road Log. The Maintenance Division performs over 100 functions to keep the transportation system operating at its original "as built" condition and capacity.

Budget Highlights:

The 2004 budget for the County Road Fund is 12.6% above 2003. This budget includes:

- a) \$8.4 million in funds allocated for a capital projects transfer to the Public Works Construction fund;
- b) \$8 million for land acquisition, design, and 2004 construction costs for a potential new Road Maintenance Facility;
- c) \$5 million for land acquisition and design services for a potential new Transportation Services Building;
- d) The addition of 6.5 positions in the Engineering Program Development (6) and Information Technology (.5) Divisions; and
- e) \$100,000 for review of Regional Transportation Improvement District impact.

This proposed budget will require the use of \$14 million in prior fund balance to support the requested staffing, services, and programs (most of which would be used for "one-time expenses").

County Road Fund

Performance Measures

- | | |
|---|---|
| <p>1) Develop and submit the Six-Year Transportation Improvement Program Annual Road Program and the Transportation Element of the Capital Facilities Plan for adoption by the County Council by November 31, 2004 to facilitate the planning and implementation of necessary transportation system improvements. (Goal A, B)</p> <p>2) Provide project management services (engineering, design, environmental assessment documentation, acquisition of right-of-way, contract administration) to 18 projects identified in the County's Annual Road Program so that those projects may be advertised for bid by December 31, 2004. (Goal A, B)</p> <p>3) Enhance the Road Operations Division web page to include such features as: maintenance</p> | <p>program overview, weekly construction delay updates, links to WSDOT and other traffic related sites, and on-line Request for Action form to increase public awareness and facilitate prompt response to public complaints. (Goal E, G, H)</p> <p>4) Commence implementation of the Maintenance Accountability Process by December 2004 through development of maintenance standards, creation of an inventory of current road conditions, identification of needs, and defining an acceptable level of road system condition, with the objective being ensuring that the Road Operation Division provides cost effective services. (Goal G, H)</p> |
|---|---|

FUNDING SOURCES

	2001 Actual	2002 Actual	2003 Budget	2004 Budget	Absolute Change	Percent Change
Est Use of Begin Fund Balance	\$ —	\$ —	\$ 8,688,360	\$ 14,092,720	\$ 5,404,360	62.2 %
Taxes	31,988,069	33,418,275	35,361,490	36,939,800	1,578,310	4.5
Licenses & Permits	59,308	78,905	51,000	86,000	35,000	68.6
Intergovernmental Revenue	13,911,195	13,568,930	14,062,920	14,277,650	214,730	1.5
Charges for Services	735,971	1,003,513	762,800	1,202,000	439,200	57.6
Miscellaneous Revenue	118,059	98,502	109,000	63,200	(45,800)	(42.0)
Other Financing Sources	537,296	696,672	293,000	169,000	(124,000)	(42.3)
Total	\$47,349,898	\$48,864,797	\$59,328,570	\$66,830,370	\$ 7,501,800	12.6 %

PROGRAM EXPENDITURES

	2003 FTE	2004 FTE	2003 Budget	2004 Budget	Absolute Change	Percent Change
Engineering	84.50	89.27	\$ 4,002,360	\$ 5,236,680	\$ 1,234,320	30.8 %
County Engineer/Admin Svcs	28.30	29.65	16,255,160	22,022,700	5,767,540	35.5
Program Development	16.00	16.00	1,905,150	2,116,780	211,630	11.1
Roads Maintenance	167.82	167.70	21,816,780	21,898,260	81,480	0.4
Traffic Administration	33.66	33.66	4,254,350	4,598,910	344,560	8.1
Transfer Out Const/Other Serv	—	—	11,094,770	10,957,040	(137,730)	(1.2)
Total	330.28	336.28	\$59,328,570	\$66,830,370	\$ 7,501,800	12.6 %

EXPENDITURE BY ACTIVITY

	County		Program Development	Road Maintenance	Traffic	2004 Budget Request Totals	2003 Budget Totals	Absolute Change	Percent Change
	Eng/Admin Services	Engineering							
542XX Road Maintenance	\$ —	\$ 72,470	\$ —	\$ 15,359,440	\$ 2,520,230	\$ 17,952,140	\$ 17,748,190	\$ 203,950	1.1 %
54290 Maintenance Administration	—	—	—	1,654,770	412,250	2,067,020	1,936,290	130,730	6.8
54310 Management	741,390	155,220	111,950	369,740	92,930	1,471,230	1,163,310	307,920	26.5
54320 Undistributed Engineering	25,250	3,722,000	411,300	371,120	830,290	5,359,960	4,541,970	817,990	18.0
54330 Data Processing	475,110	—	—	—	—	475,110	479,800	(4,690)	(1.0)
54330 Insurance	1,000,570	—	—	—	—	1,000,570	1,175,410	(174,840)	(14.9)
54330 Interfund Indirect Transfer	2,152,410	—	—	—	—	2,152,410	1,707,910	444,500	26.0
54330 Support Services	3,755,140	—	210,320	—	—	3,965,460	3,993,950	(28,490)	(0.7)
54340 Planning	—	—	1,109,590	323,110	4,060	1,436,760	1,155,280	281,480	24.4
54360 Training	100,190	257,380	83,390	395,120	76,430	912,510	838,320	74,190	8.8
54370 Undistributed Labor Costs	335,770	1,029,610	190,230	1,572,160	592,720	3,720,490	3,256,690	463,800	14.2
54410 Facility Construction	13,000,000	—	—	604,500	—	13,604,500	8,554,000	5,050,500	59.0
54420 Facility Maintenance	436,870	—	—	1,248,300	70,000	1,755,170	1,682,680	72,490	4.3
Subtotal Line Operations	22,022,700	5,236,680	2,116,780	21,898,260	4,598,910	55,873,330	48,233,800	7,639,530	15.8
59700 Op Transfer Out	242,870	34,000	—	411,570	—	688,440	1,260,010	(571,570)	(45.4)
59700 Op Transfer Out - Constr	8,409,600	—	—	—	—	8,409,600	8,394,600	15,000	0.2
59700 Op Transfer Out - Ferry	504,000	—	—	—	—	504,000	540,160	(36,160)	(6.7)
59700 Op Transfer Out - GIS	355,000	—	—	—	—	355,000	—	355,000	∞
59700 Op Transfer Out - Traffic Enforcement	1,000,000	—	—	—	—	1,000,000	900,000	100,000	11.1
Subtotal Transfers	10,511,470	34,000	—	411,570	—	10,957,040	11,094,770	(137,730)	(1.2)
Total	\$ 32,534,170	\$ 5,270,680	\$ 2,116,780	\$ 22,309,830	\$ 4,598,910	\$ 66,830,370	\$ 59,328,570	\$ 7,501,800	12.6 %
2004 Full Time Equivalentents	31.65	86.27	17.00	167.70	33.66	336.28			

County Road Fund

STAFFING SUMMARY

	1999 FTE	2000 FTE	2001 FTE	2002 FTE	2003 FTE	2004 FTE
Dir – Public Works & Util	0.51	0.51	0.51	0.51	0.51	0.51
County Engineer	1.00	1.00	1.00	1.00	1.00	1.00
Deputy PW & Utilities Dir	0.51	0.51	0.51	0.51	0.51	0.51
Spec Asst to Exec-Transportation	—	—	—	—	1.00	1.00
Maintenance Manager	1.00	1.00	1.00	1.00	1.00	1.00
Administrative Svcs Mgr	1.00	1.00	1.00	0.87	0.87	0.87
Program Development Mgr	1.00	1.00	1.00	1.00	1.00	1.00
Traffic Engineer	1.00	1.00	1.00	1.00	1.00	1.00
Assoc Traffic Engineer	1.00	1.00	1.00	1.00	1.00	1.00
Road Maintenance Supt	1.00	1.00	1.00	2.00	2.00	2.00
Civil Engineer	45.00	44.80	46.50	46.50	44.50	46.47
Traffic Operations Supv	1.00	1.00	1.00	1.00	1.00	1.00
Right of Way Agent	6.00	6.00	6.00	7.00	7.00	7.00
Traffic Signal Tech	5.00	5.00	5.00	5.00	5.00	5.00
Admin Program Mgr	1.00	0.96	0.96	0.96	0.96	0.96
Airport Administrator	—	—	—	—	1.00	1.00
Planner	5.00	5.00	5.00	5.00	5.00	5.00
Public Works Supv	10.00	10.00	10.00	9.00	10.00	10.00
Engineering Tech	51.00	49.00	50.00	50.00	54.00	57.80
Maintenance Crew Chief	5.00	5.00	5.00	5.00	5.00	5.00
Heavy Equipment Operator	—	—	21.00	21.00	18.00	18.00
Contract Compliance Ofcr	1.00	1.00	1.00	1.00	1.00	1.00
Grant Accountant	1.00	1.00	1.00	1.00	1.00	1.00
Environmental Biologist	1.00	2.00	2.00	3.00	3.00	3.00
Dept Info Tech Spec	2.00	2.00	3.00	2.00	3.00	3.50
Equipment Operator	—	—	—	—	3.00	3.00
Maintenance Tech	116.00	115.92	113.92	79.92	80.92	80.70
Traffic Sign Technician	12.00	12.00	12.00	12.00	12.00	12.00
Accounting Assistant	5.00	4.80	4.80	5.60	5.60	5.60
Contract Compliance Spec	1.00	1.00	1.00	1.00	1.00	1.00
Office Assistant	15.00	16.00	16.00	15.66	15.66	15.36
Training Coordinator	—	—	—	—	1.00	1.00
Administrative Assistant	1.00	0.87	—	—	0.85	1.00
Records Specialist	1.00	1.00	1.00	1.00	1.00	1.00
Maintenance Office Mgr	5.00	5.00	5.00	5.00	5.00	5.00
Administrative Aide	1.00	0.98	1.85	1.85	1.00	1.00
Contract Compl Field Mntr	1.00	1.00	1.00	1.00	1.00	1.00
Maintenance Worker	—	—	—	33.00	30.00	32.00
Clerical Aide	—	—	1.00	1.00	1.00	1.00
Custodian	2.00	3.00	2.65	2.65	1.90	—
Public Works Project Coord	1.00	1.00	1.00	1.00	—	—
Maintenance Office Admin	1.00	1.00	1.00	—	—	—
Maintenance Spec	21.00	21.00	1.00	—	—	—
Exec Dir - Operations	0.50	0.50	—	—	—	—
Executive Secretary	0.50	0.50	—	—	—	—
Training & Safety Coord	1.00	—	—	—	—	—
Total	327.02	326.35	328.70	327.03	330.28	336.28

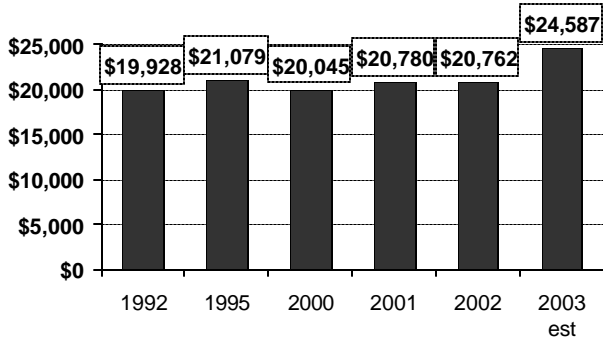
County Road Fund

WORKLOAD SERVICE DATA

	Unit of Measure	1999 Actual	2000 Actual	2001 Actual	2002 Actual	2003 Estimate	2004 Estimate
Pothole premix patching	Ton	1,255	1,071	1,080	711	500	550
Spreader box patching	Ton	2,647	949	3,197	6,275	5,450	5,420
Seal coating	Mile	224	132	137	143	130	150
Skin patching	Sq. Yard	1,975	26,894	23,805	9,929	18,000	700
Grading & shaping gravel road	Mile	110	86	106	101	130	140
Haul aggregate for gravel road	Cubic Yd.	2,262	1,712	1,481	2,721	2,500	910
Grading & shaping gravel shld	Sh. Mile	427	466	549	616	380	680
Hauling aggregate - gravel shld	Ton	29,692	16,247	20,007	21,199	15,500	17,000
Mowing Shoulders	Sh. Mile	1,093	1,619	1,465	1,655	1,500	2,040
Ditching:							
With backhoe/Drott	Ditch Feet	124,608	31,437	24,047	46,243	25,000	33,400
With belt Loader/Ditchmaster	Ditch Mile	412	196	58	79	40	160
Manual clean culvert ends & grate	Each	12,891	3,252	4,369	2,124	5,500	8,220
Mech. clean drainage structure	Each	5,627	3,797	2,974	7,211	5,200	8,100
Cleaning with jet rodder	Lin. Feet	252,887	148,146	134,356	52,152	160,000	168,250
Repair/Replace:							
Culvert pipe	Lin. Feet	7,295	4,550	4,316	4,312	4,500	3,810
Catch basin	Manhour	2,161	1,831	1,386	134	950	1,600
Drywell/Drainfield	Manhour	3,051	830	2,029	32	800	2,780
Erosion control	Manhour	1,075	859	928	1,584	1,200	1,610
Grate	Each	62	38	71	52	65	80
Maintenance of holding ponds	Site	7	234	12	-		
Paint culvert marks	Each	88	135	178	114	250	700
Bridge repair	Manhour	961	905	392	179	886	490
Luminaire routine	Each	283	458	136	-	261	230
Signage activity	Each	161,882	166,420	142,615	137,850	180,710	180,500
Pavement markings	Each	7,449	7,442	2,065	5,944	6,460	5,800
Pavement striping	Mile	1,742	1,858	1,376	1,833	3,822	2,835
Signal electronics repair	Manhour	1,355	1,075			1,811	2,120
Signal cabinet	Intersection	408	509	241	123	460	465
Signal routine	Intersection	850	867	526	951	1,081	1,040
Signal misc. intersection repairs	Each	439	404	174	-	562	510
Signal relamping	Each	10,379	2,727	1,747	2,635	4,340	3,900
Guardrail repair	Manhour	1,424	1,088	2,080	3,671	1,800	3,100
Plowing and sanding	Lane Mile	703	999	3,613	4,413	10,927	5,410
Sanding	Cub. Yard	915	1,060	426	1,634	10,380	2,750
Front end broom	Curb Mile	2,431	2,607	3,792	3,365	2,300	4,000
Self-Propelled/Self-Load. sweep	Curb Mile	4,258	2,627	5,014	3,006	6,000	7,720
Flushing	Curb Mile	1,412	552	438	231	323	230
Rotary brush cutter	Sh. Mile	556	573	996	716	600	850
Brushing and chipping	Sh. Mile	5,360	5,837	5,539	100	200	130
Litter pickup	Sh. Mile	5,098	5,722	6,816	5,773	7,500	5,350
Cut and fill slope repairs	Manhour	2,132	529	1,378	763	1,400	1,880
Maint. admin.-field supervision	Manhour	1,994	16,045	17,533	17,942	17,080	15,000
Maint. admin.-office support	Manhour	12,795	7,834	11,230	7,785	7,968	7,970
Training	Manhour	5,499	3,584	4,122	1,422	5,840	5,840

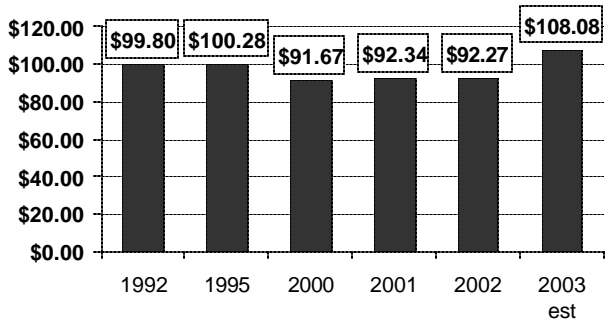
BUDGET RATIOS

Expense per Mile of Road



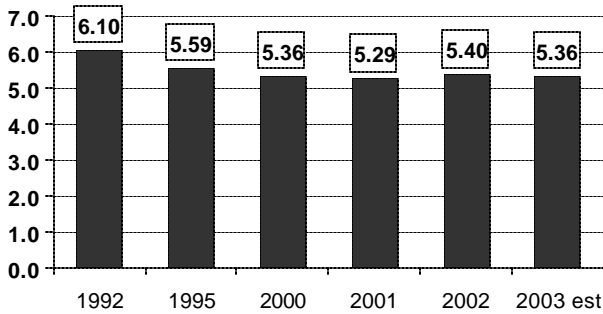
❖ From 1992 to 2003 the total expense per mile of road maintained in the County service area increased 23% after adjusting for inflation.

Expense per Capita



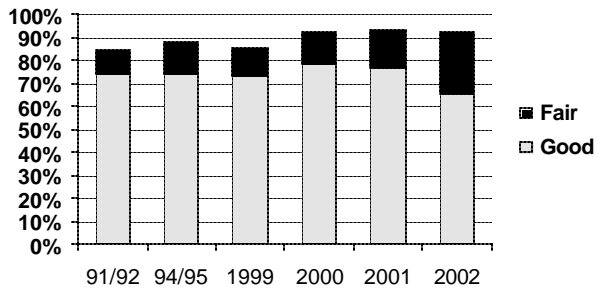
❖ From 1992 to 2003 the total expense per County resident in the County service area increased 8% after adjusting for inflation.

Miles of Road per Employee



❖ From 1992 to 2003 the average number of miles maintained per Road Department employee decreased 12%.

Pavement Surface Condition



❖ From 1991/1992 to 2002, roads with surface rating of good or fair increased 9%. The rating scale changed somewhat in 1998 to align with current standards.

Equipment Rental and Revolving

Internal Service Fund

The mission of the Equipment Services Division is to provide professional and competitive procurement, maintenance and disposal of transportation and construction equipment; to ensure safe operating equipment; and to meet the equipment services needs of County Roads, Sewer Utility, Parks and Recreation Services and Surface Water Management.

Departmental Summary:

The Equipment Services Division of the Public Works and Utilities Department is responsible for the purchase, maintenance, and repair of County Road, Utility, River Improvement, and Parks Department equipment. Repairs and preventive maintenance work is performed at the Central Maintenance Shop garage and at five outlying shops located at Puyallup, Elk Plain, Chambers Creek, Purdy and River Improvement.

The Central Maintenance Shop maintains the primary inventory of vehicle supplies and parts, and utilizes an automated system to track the parts inventory. The faster fleet management system, which compiles data to analyze performance, downtime, backlog, and frequency of repair data, has been implemented at all Equipment Service Division shops.

The ER&R Fund also provides material (rocks, paint, traffic signals, etc.) for County Road operations.

Budget Highlights:

The 2004 Equipment Rental and Revolving Fund reflect a 17.2% budget decrease from 2003. This decrease results from the fact that the allocation for Vehicle Replacements and New Vehicle purchases is much less in 2004 than was the case in 2003.

FUNDING SOURCES

	2001 Actual	2002 Actual	2003 Budget	2004 Budget	Absolute Change	Percent Change
Est Use of Begin Fund Balance	\$ —	\$ —	\$ 941,040	\$ —	\$ (941,040)	(100.0) %
Charges for Services	3,187,423	3,122,901	3,480,000	3,338,000	(142,000)	(4.1)
Miscellaneous Revenue	6,111,238	6,445,535	6,610,000	6,205,150	(404,850)	(6.1)
Contributed Capital	—	561	—	—	—	—
Other Financing Sources	689,308	238,922	1,340,000	697,000	(643,000)	(48.0)
Total	\$ 9,987,969	\$ 9,807,919	\$12,371,040	\$10,240,150	\$ (2,130,890)	(17.2) %

Equipment Rental and Revolving

PROGRAM EXPENDITURES

	2003 FTE	2004 FTE	2003 Budget	2004 Budget	Absolute Change	Percent Change
Equipment Operating/Repair Srv	24.43	24.43	\$ 3,463,090	\$ 3,846,550	\$ 383,460	11.1 %
Capital Expenses	—	—	5,462,950	3,093,600	(2,369,350)	(43.4)
Revolving Account Expenses	—	—	3,445,000	3,300,000	(145,000)	(4.2)
Total	24.43	24.43	\$12,371,040	\$10,240,150	\$ (2,130,890)	(17.2) %

STAFFING SUMMARY

	1999 FTE	2000 FTE	2001 FTE	2002 FTE	2003 FTE	2004 FTE
Dir – Public Works & Util	0.05	0.05	0.05	0.05	0.05	0.05
Deputy PW & Utilities Dir	0.05	0.05	0.05	0.05	0.05	0.05
Administrative Svcs Mgr	—	—	—	0.13	0.13	0.13
Equipment Svc Manager	1.00	1.00	1.00	1.00	1.00	1.00
Mechanic , Heavy DT LD	—	—	—	1.00	1.00	1.00
Equipment Supervisor	1.00	1.00	1.00	1.00	1.00	1.00
Mechanic, Heavy Duty-ASE	—	—	—	5.00	4.00	4.00
Mechanic Heavy Duty	7.00	7.00	7.00	2.00	3.00	3.00
Mechanic-ASE	—	—	—	4.00	4.00	4.00
Mechanic	8.00	8.00	8.00	4.00	4.00	4.00
Equipment Oper Instructor	—	1.00	1.00	1.00	1.00	1.00
Equipment Svc Attendant	1.00	1.00	1.00	1.00	1.00	1.00
Parts Specialist Lead	1.00	1.00	1.00	1.00	1.00	1.00
Accounting Assistant	1.00	1.00	1.00	1.20	1.20	1.20
Parts Specialist	2.00	2.00	2.00	2.00	2.00	2.00
Mechanic, Heavy Duty Lead	1.00	1.00	1.00	—	—	—
Office Assistant	1.00	—	—	—	—	—
Total	24.10	24.10	24.10	24.43	24.43	24.43

WORKLOAD SERVICE DATA

	Unit of Measure	1999 Actual	2000 Actual	2001 Actual	2002 Actual	2003 Estimate	2004 Estimate
Active vehicles in fleet	Vehicles	434	432	448	440	451	461
Work orders processed per year	Work Order	6,072	5,392	5,318	5,209	5,099	5,000
Total vehicle operating hours	Hours	368,122	378,545	376,911	394,015	385,000	395,000

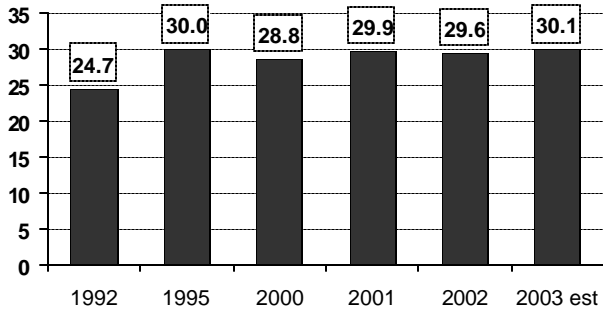
Equipment Rental and Revolving

EQUIPMENT PURCHASES

Department	Qty	Equipment Description	2004 Budget
Replacement Equipment (funded by replacement reserve)			
Road Fund	1	Lowboy Truck	\$ 130,000
	2	1500 gallon Water Truck	160,000
	1	Backhoe Loader	98,300
	1	Asphalt Patch Truck	156,000
	2	12 ton Equipment Trailer	45,000
	1	3 ton Roller	35,200
	1	Rubber Tire Loader	120,000
	1	Force Feed Loader	181,000
	3	6000 lb Forklift	84,900
	1	Small Equipment Trailer	5,800
	1	Lowboy Trailer	67,600
	2	Brush Cutter Mower	185,800
	2	Oil Distributor Truck	180,000
Traffic	1	Small 4X4 SUV	24,000
	1	29 ft Aerial Van	70,000
Engineering	1	1/4 ton 4X4 Ext Cab Pickup with Canopy	24,000
Sewer Utility	2	1 ton Cargo Van with Interior Cabs	60,000
	1	Flatbed Truck with Crane	65,000
	1	5 yard Cleaner Combo Truck	200,000
Water Programs	1	1/4 ton Extended Cab Pickup	15,000
	1	1 ton Pickup	19,000
	1	3/4 ton 4X4 Pickup	21,900
Parks	1	Trailer Mount Pressure Washer	12,000
	1	Utility Vehicle with Dump	11,100
ER&R	1	Shop Truck	85,000
	32	Subtotal	2,056,600
New Equipment (funded by department listed)			
Road Fund	2	Upgrades to Water Trucks	120,000
	4	Hook Lift Containers	20,000
	1	8 Passenger Extended Van	25,000
	1	10 yard Cleaner Combo Truck	210,000
Engineering	2	1/4 ton Extended Cab Pickup with Canopy	34,000
Sewer Utility	1	Upgrades to Flatbed Crane	10,000
	1	3/4 ton 4X4 Pickup Crew Cab with Trailer	38,000
	1	3/4 ton 4X4 Extended Cab Pickup	30,000
Water Programs	2	Small 4X4 SUV	60,000
	15	Subtotal	547,000
Other			
	1	Misc Equip Unscheduled Replacements	450,000
	1	Steam Cleaner	10,000
	1	Driveability Diagnostic Hardware	20,000
	1	Exhaust Extraction System	10,000
	1	Subtotal	490,000
	48	Total	\$ 3,093,600

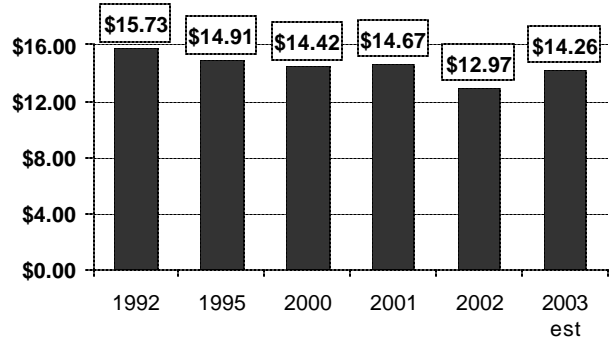
BUDGET RATIOS

Active Vehicles per Mechanic



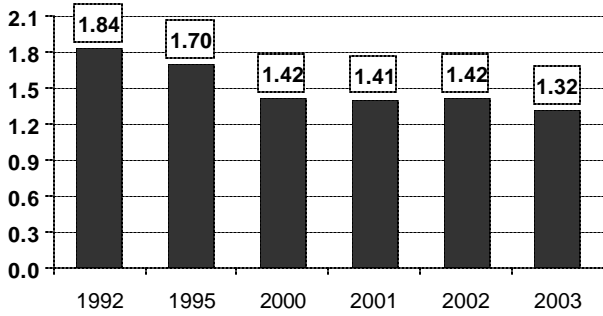
❖ From 1992 to 2003 the number of active vehicles per mechanic increased 22%.

Operating Cost per Hour



❖ From 1992 to 2003 the operating cost per hour of vehicle usage decreased 9% after adjusting for inflation.

Work Orders per 100 Hours of Operation



❖ From 1990 to 2003 the number of work orders per 100 hours of vehicle operation decreased 28%.

Pierce County Ferry Services

Enterprise Fund

Departmental Summary:

The Pierce County Ferry Services fund provides for the operation, maintenance, and capital improvement for the Pierce County ferry system, which consists of two ferry boats and the ferry landings at Steilacoom, Ketron Island, and Anderson Island. The fund's financial goal is to be as self-supporting as possible primarily through a mix of fare revenue, state ferry subsidy, and gas tax revenue. The County Road Fund subsidizes any revenue shortfall for the Pierce County Ferry Services fund.

The Pierce County ferry system is the only public method of transportation for people and goods for Ketron and Anderson island. Over 365,000 persons are transported to and from these islands annually. Outside contracted services are utilized to provide day to day operations of the ferry boats and ticket sales.

This fund also includes the debt servicing of the \$3,150,000 State loan for the construction of a new ferry. The debt outstanding on December 31, 2003 is \$1,667,105. The interest rate is 1% payable annually on July 1.

Budget Highlights:

The Ferry Service budget for 2004 reflects the following items if note:

- a) Ferry drydocking and repair expense \$575,000
- b) New ferry vessel (total cost = \$8,600,000, half of this will be expended in 2004) 4,300,000
- c) Design and engineering for Anderson Island dock replacement..... 205,000

The budget includes a fare rate increase (8% - 15% depending upon classification) which will help finance the new vessel, as well as provide funding for additional ferry runs in 2004.

Performance Measures

- 1) Acquire financing for the design and construction of a new 54 car ferry vessel which will enhance the ferry transportation system and assist in meeting existing and future capacity requirements. (Goal A, H)

FUNDING SOURCES

	2001 Actual	2002 Actual	2003 Budget	2004 Budget	Absolute Change	Percent Change
Est Use of Begin Fund Balance	\$ —	\$ —	\$ —	\$ 663,820	\$ 663,820	∞ %
Intergovernmental Revenue	692,105	199,519	672,490	981,350	308,860	45.9
Charges for Services	1,116,726	1,220,892	1,350,300	1,480,400	130,100	9.6
Miscellaneous Revenue	36,489	896,999	52,300	52,800	500	1.0
Other Financing Sources	599,535	645,113	540,160	4,033,000	3,492,840	646.6
Total	\$ 2,444,855	\$ 2,962,523	\$ 2,615,250	\$ 7,211,370	\$ 4,596,120	175.7 %

Pierce County Ferry Services

EXPENDITURES

	2001 Actual	2002 Actual	2003 Budget	2004 Budget	Absolute Change	Percent Change
Salaries & Wages	\$ 150,342	\$ 103,621	\$ 73,290	\$ 92,230	\$ 18,940	25.8 %
Personnel Benefits	38,883	24,549	19,330	23,490	4,160	21.5
Supplies	164,401	149,650	161,930	206,530	44,600	27.5
Other Services & Charges	1,573,661	2,234,458	2,156,930	2,537,210	380,280	17.6
Intergovernmental Services	6,034	—	—	—	—	—
Capital Outlays	825,773	1,544	—	4,150,000	4,150,000	∞
Debt Service-Principal	—	—	185,240	185,240	—	—
Interest	21,302	19,450	18,530	16,670	(1,860)	(10.0)
Total	\$ 2,780,396	\$ 2,533,272	\$ 2,615,250	\$ 7,211,370	\$ 4,596,120	175.7 %

STAFFING SUMMARY

	1999 FTE	2000 FTE	2001 FTE	2002 FTE	2003 FTE	2004 FTE
Civil Engineer	—	0.20	0.50	0.50	0.50	0.53
Admin Program Mgr	—	0.04	0.04	0.04	0.04	0.04
Maintenance Tech	—	0.08	0.08	0.08	0.08	0.30
Accounting Assistant	—	0.20	0.20	0.20	0.20	0.20
Engineering Tech	—	—	—	—	—	0.20
Office Assistant	—	—	—	—	—	0.30
Custodian	—	—	0.35	0.35	0.10	—
Administrative Assistant	—	0.13	—	—	0.15	—
Administrative Aide	—	0.02	0.15	0.15	—	—
Total	—	0.67	1.32	1.32	1.07	1.57

Public Works Construction Fund

Capital Project Fund

Departmental Summary:

The Public Works Construction Fund was established to account for costs of transportation construction projects, which typically extend beyond a single budget year. Costs are tracked over the life of each project for reimbursement and reporting purposes. Revenues sources for the projects include federal, state, or local funds.

State RCWs require the preparation of a plan for transportation improvement programs and projects. The document must be updated annually and filed with the Secretary of the Department of Transportation. In addition, each urban-area city and county must submit a separate program section identifying projects for submittal to the Transportation Improvement Board (TIB) for potential funding under the Urban Arterial Trust Account (UATA) or the Transportation Improvement Account (TIA). The plan also informs other jurisdictions of Pierce County's current planning direction for transportation needs. The six-year Transportation Improvement Plan (TIP) is approved by the Pierce County Council and submitted to the Puget Sound Regional Council for review and inclusion in the regional transportation plan. The list of construction projects shown on the following pages reflects anticipated expenditures for the current year only. Even though most projects extend over multiple years, an annual allocation is required for purposes of balancing the annual budget and to meet other legal requirements. The actual projects under construction may vary from those shown below as long as the project undertaken is authorized in one of the approved transportation planning documents referenced above.

Budget Highlights:

The Public Works Construction Fund budget for 2004 totals \$38,266,000, which is somewhat below the 2003 program. The anticipated projects and related funding sources are shown later in this section. However, all projects listed in the Transportation Improvement Plan are eligible for activity in 2004. Approximately one third of the funding for the 2004 projects is from outside sources (usually federal or state grants).

FUNDING SOURCES

	2001 Actual	2002 Actual	2003 Budget	2004 Budget	Absolute Change	Percent Change
Est Use of Begin Fund Balance	\$ —	\$ —	\$15,743,400	\$ 6,841,000	\$ (8,902,400)	(56.5) %
Intergovernmental Revenue	7,233,519	12,506,501	15,813,000	11,361,100	(4,451,900)	(28.2)
Charges for Services	1,020,222	1,353,901	1,004,000	614,020	(389,980)	(38.8)
Miscellaneous Revenue	—	10,500	—	—	—	—
Other Financing Sources	12,986,357	11,408,000	19,284,600	19,449,880	165,280	0.9
Total	\$21,240,098	\$25,278,902	\$51,845,000	\$38,266,000	\$ (13,579,000)	(26.2) %

Public Works Construction Fund

EXPENDITURES

	2001	2002	2003	2004	Absolute	Percent
	Actual	Actual	Budget	Budget	Change	Change
Salaries & Wages	\$ 2,091,550	\$ 2,715,553	\$ 3,675,410	\$ 3,340,060	\$ (335,350)	(9.1) %
Personnel Benefits	476,691	580,829	751,730	760,460	8,730	1.2
Supplies	169,473	226,525	534,580	203,060	(331,520)	(62.0)
Other Services & Charges	1,788,083	3,282,975	7,079,940	5,627,220	(1,452,720)	(20.5)
Intergovernmental Services	294,056	753,972	1,430,950	1,722,990	292,040	20.4
Capital Outlays	11,012,063	21,926,796	38,372,390	26,612,210	(11,760,180)	(30.6)
Total	\$15,831,916	\$29,486,650	\$51,845,000	\$38,266,000	\$ (13,579,000)	(26.2) %

Project Summary

2004 Funding Sources
(All Costs in \$1000's)

PROJECT NAME	PROJECT LIMITS	CRP #	Total Cost	2004 Funding Sources					
				2004 Budget	Carry-over	Road Fund	Real Estate Excise Tax	Other	
Br #1204-A / 8 St E	8 St E over White / Stuck River	5388	5,760	50	—	50	—	—	
Br #1204-B / 8 St E	8 St E under UPRR	5384	14,730	400	19	35	—	346	
Br #12173-B / 304 St E	304 St E over S Fork Muck Ck	5385	598	57	—	11	—	46	
Br #14164-A / Lynch Ck Rd E	Lynch Ck Rd E over Lynch Ck	5653	187	45	—	9	—	36	
Br #19204-B / 66 Ave E	66 Ave E over Clarks Ck	5544	400	38	20	—	—	18	
Br #19204-C / 66 Ave E	66 Ave E over Clarks Ck	5545	400	42	22	—	—	20	
Br #19204-H / 70 Ave E	River Rd E (SR-167) to N Levee Rd E	5369	9,075	125	—	17	—	108	
Br #20196-A / Johns Rd E	Johns Rd E over Wilkeson Ck	5654	50	1	—	1	—	—	
Br #2174-B / 288 St E	288 St E over S Fork Muck Ck	5391	171	1	—	1	—	—	
Br #2210-B / S Vaughn Rd Kpn	S Vaughn Rd KPN over Vaughn Bay	5352	2,120	150	—	30	—	120	
Br #24164-A / Alder Cutoff Rd E	Alder Cutoff Rd E over Mashel River	5386	1,975	1	—	1	—	—	
Br #26205-B / 218 Ave E	218 Ave E over PSP&L Canal	5383	679	288	62	—	—	226	
Br #26211-A / F1 Bridge Rd F1	60' before Bridge and 360' beyond Bridge	5389	347	275	275	—	—	—	
Br #26211-A / F1 Bridge Rd F1	F1 Bridge Rd F1 over Hale Passage	5355	582	50	8	—	—	42	
Br #27204-A / Milwaukee Ave E	Milwaukee Ave E over Puyallup River	5390	183	183	—	37	—	146	
Br #36193-A / 176 St E	176 St E over Tacoma Rail	5387	1,280	30	—	30	—	—	
Br #4181-A / Nisqually Rd Sw	Over BNSFRR Tracks	5372	7,011	500	100	—	—	400	
Br #5174-A / 304 St E	304 St E over Drainage Ditch	5655	33	1	—	1	—	—	
Br #5175-C / Orville Rd E	Orville Rd E over Kapowsin Ck	5373	1,181	91	—	19	—	72	
Br #5177-A / Fairfax Forest Rsv Rd	Fairfax Forest Res Rd over Tolmie Ck	5360	74	40	—	15	—	25	
Br #6205-A / Lk Tapps Pkwy E	8 St E to N Access Ramp	5357	5,439	54	—	—	—	54	
Bridge St Feasibility Study	Bridge St near Orting City Limits	5678	300	300	—	300	—	—	
Brookdale Rd E / Waller Rd E	Intersection	5631	1,004	1	—	1	—	—	
C St S / 138 St S	Intersection	5481	345	1	—	1	—	—	
Canyon Rd E	112 St E to SR-512 - Non Eligible TIB	5637	216	2	—	2	—	—	
Canyon Rd E	112 St E to SR-512 - TIB Stage 3	5636	1,370	2	—	2	—	—	
Canyon Rd E	116 St E to 106 St E	5153	5,905	50	50	—	—	—	
Canyon Rd E	131 St Ct E to 116 St E	5433	9,904	235	110	45	—	80	
Canyon Rd E	160 St E to 131 St Ct E	5404	18,189	3,657	70	949	—	2,638	
Canyon Rd E	176 St E to 160 St E	5656	11,213	1,600	100	—	1,500	—	
Canyon Rd E	192 St E to 176 St E	5666	6,200	5	—	5	—	—	
Canyon Rd E	Brookdale Pond Improvements	5665	1,515	150	150	—	—	—	
Canyon Rd E / Northerly Exit	Pioneer Wy E to 52 St E	5643	13,565	1,720	—	78	154	1,488	

Project Summary

2004 Funding Sources
(All Costs in \$1000's)

PROJECT NAME	PROJECT LIMITS	CRP #	Total Cost	2004				
				Budget	Carry-over	Road Fund	Excise Tax	Other
				Real Estate				
Canyon Rd E / Southerly Exit	224 St E to 192 St E	5123	9,000	65	65	—	—	—
Canyon Rd E / Southerly Exit	260 St E / SR-7 to 224 St E	5124	7,000	101	41	60	—	—
Canyon Rd E / 104 St E	Intersection	5216	228	2	—	2	—	—
Canyon Rd E / 176 St E	Intersection	5657	5,000	1,847	1,597	—	250	—
Cross Base Corridor Study	I-5 to 176 St S	5151	4,135	180	—	180	—	—
Day Labor	Countywide	5000	1,600	350	—	350	—	—
E Valley Hwy E	S Access Ramp to N Access Ramp	5490	2,491	65	—	—	—	65
FI Bridge Rd FI/Warren Dr NW/32 St NW	FI Br #26211-A to 70 Ave NW	5667	2,280	150	—	30	—	120
Fruitland Ave E / 104 St E	Intersection	5598	1,337	1	—	1	—	—
Guardrail Program - 2004	Countywide	5648	70	70	—	70	—	—
Hunt St NW	46 Ave NW to Lombard Dr NW	5599	3,500	10	—	10	—	—
Jahn Ave NW / 32 St NW / 22 Ave NW	36 St NW to 24 St NW	5540	670	25	—	25	—	—
Jovita Blvd E / 8 St E	W Valley Hwy E to SR-167 NB On-ramp	5467	1,000	35	5	30	—	—
June Ck Culvert	Fairfax Forest Reserve Rd at June Ck	5639	205	2	—	2	—	—
Lk Tapps Pkwy E	Sumner-Tapps Ext to 182 Ave E	5486	3,014	1,540	—	616	—	924
Lk Tapps Pkwy E / S Access Ramp	E Valley Hwy E to Lakeland E property line	5434	6,032	305	305	—	—	—
LTPE / N Access RP / Br #6205-A W Embk	S Access Rp to BR #6205-A E Abutment	5489	4,944	2	—	2	—	—
McKinley Ave	96 St E to 72 St E	5470	501	2	—	2	—	—
Military Rd E / 122 Ave E / 136 St E	Intersection	5145	1,105	10	10	—	—	—
Military Rd E / 122 St E	Military Rd E to SR-162	5592	14,743	1	—	1	—	—
Military Rd E / Reservoir Rd E	Intersection	5514	770	100	21	30	—	49
Military Rd E / Shaw Rd E	Intersection	5285	630	230	230	—	—	—
Nisqually Rd SW	BR #4181-A to BR #8181-A	5463	80	2	—	2	—	—
Nisqually Rd SW	I-5 to BR #4181-A	5443	1,624	595	473	—	—	122
Nisqually Wetland Bank	SW of SR-7 and Ohop Ck Xing	5381	114	10	—	10	—	—
Pioneer Wy E	W/O 52 St E to Gay Rd E	5663	244	2	—	2	—	—
Pioneer Way E / Waller Rd E	Intersection	5628	540	1	—	1	—	—
Point Fosdick Dr NW / 36 St NW	Intersection	5677	350	250	—	250	—	—
Pt Fosdick / Stone Dr NW / 34 Ave NW	Intersection	5581	630	50	10	40	—	—
Rhodes Lk Rd Corridor Study	198 Ave E to SR-162	5543	1,266	370	370	—	—	—
S Prairie Rd E	121 St Ct E to 120 St E	5629	1,563	230	—	24	—	206
S Prairie Rd E	202 Ave E to 214 Av E	5139	1,748	2	—	2	—	—
S Prairie Rd E	Bonney Lk City Limits to 202 Ave E	5642	301	44	—	44	—	—

Public Works Construction Fund

Project Summary

2004 Funding Sources
(All Costs in \$1000's)

PROJECT NAME	PROJECT LIMITS	CRP #	Total Cost	2004				
				Budget	Carry-over	Road Fund	Excise Tax	Other
S Prairie Rd E	SR-410 to Bonney Lk City Limits	5548	2,070	380	—	—	—	380
S Tapps Dr E	Various Locations	5541	129	25	—	25	—	—
Shaw Rd E / 122 St E	Intersection - Phase 2	5525	963	2	—	2	—	—
Shaw Rd E Corridor Study	Sunrise Blvd E top 39 Ave SE	5441	1,202	10	10	—	—	—
Spanaway Loop Rd S	S/O Garfield St S to N/O Wheeler St S	5664	654	118	—	—	—	118
Spanaway Loop Rd S Ext	Vicinity of 10 Ave S to 176 St S / SR-7	5453	4,006	3,005	—	—	1,436	1,569
Spot Safety Program	Various Locations	5247	600	100	—	100	—	—
SR-161	176 St E to 128 St E	5640	1,415	510	63	447	—	—
SR-167	W/O and E/O new BR #19204-H	5644	3,525	15	—	2	—	13
SR-7	SR-512 to SR-507	5668	399	161	160	1	—	—
SR-704 (Cross Base Hwy)	I-5 to 176 St S	5469	180,000	5,649	—	—	5,000	649
Sumner-Buckley Hwy E / 214 Ave E	Intersection	5630	133	2	—	2	—	—
Sumner-Tapps Hwy E / 16 St E	Intersection	5658	244	105	30	75	—	—
Valley Ave E / 70 Ave E	Freeman Rd E to 20 St E	5148	1,639	475	475	—	—	—
Waller Rd E / 104 St E	Intersection	5632	204	2	—	2	—	—
Waller Rd E / 128 St E	Intersection	5633	520	1	—	1	—	—
Wetland Banking Program	Various Locations	5330	450	75	—	75	—	—
Wollochet Dr NW	Fillmore Dr NW to 40 St NW	5542	12,755	100	—	100	—	—
Woodland Ave E / 112 St E	Intersection	5526	270	97	—	10	—	87
Woodland Ave E / 128 St E	Intersection	5634	582	83	23	60	—	—
8th St E	BR #1204-A Lk Tapps Pk E	5660	6,876	377	156	—	—	221
8th St E	SR-167 NB On-Ramp to BR #1204-B	5466	4,700	330	255	75	—	—
9 St E / 12 St E	182 Ave E to 198 Ave E	5430	2,268	170	—	157	—	13
9 St E / 182 Ave E	Intersection	5228	1,051	604	604	—	—	—
18 Ave E / 112 St E	Intersection	5585	204	2	—	2	—	—
22 Ave E / 192 St E	Intersection	5670	600	1	—	1	—	—
36 St NW	Gig Harbor City Limits to 22 Ave NW	5531	2,000	25	—	25	—	—
36 St NW / 92 Ave NW	Intersection	5577	137	2	2	—	—	—
38 Ave E / 176 St E	Intersection	5508	574	350	80	270	—	—
40 St NW	77 Ave Ct NW to Wollochet Dr NW	5547	903	60	60	—	—	—
46 Ave E / 224 St E	Intersection	5239	424	2	—	2	—	—
52 St E / 70 Ave E	Canyon Rd E Ext to River Rd E (SR-167)	5498	9,945	390	—	130	—	260
70 Ave E	N Levee Rd E to 500' S/O 45 St Ct E	5645	9,175	15	—	2	—	13

Project Summary

2004 Funding Sources
(All Costs in \$1000's)

PROJECT NAME	PROJECT LIMITS	CRP #	Total Cost	2004				
				Budget	Carry-over	Road Fund	Real Estate Excise Tax	Other
70 Ave E / 184 St E	176 St E tp 74 Ave E	5672	800	10	—	10	—	—
72 St E	McKinley Ave to Portland Ave E	5284	168	2	—	2	—	—
78 Ave E	176 St E to 160 St E	5651	325	70	60	10	—	—
78 Ave E / 184 St E	Intersection	5661	500	10	—	10	—	—
78 Ave E / 192 St E	Intersection	5641	1,094	10	—	10	—	—
82 Ave E / 224 St E	Intersection	5578	360	144	2	14	—	128
82 Ave NW	At Nelayle Ck	5024	20	20	20	—	—	—
86 Ave E	176 St E to 152 St E	5549	1,101	75	75	—	—	—
86 Ave E / 128 St E	Intersection	5491	1,363	55	20	35	—	—
94 Ave E	116 St E to 112 St E	5671	5,094	1	—	—	—	1
94 Ave E	136 St E to 116 St E	5532	8,248	480	—	80	400	—
96 St E	Pacific Ave S to McKinley Ave E	5492	160	2	—	2	—	—
96 St S	Steele St S to Yakima Ave S	5448	219	2	—	2	—	—
112 St E	198 Av E/199 Av Ct E to 300' W/O 203 Av E	5590	730	175	—	175	—	—
112 St E	300' E/O Woodland Ave E to 86 Ave E	5534	6,600	1	—	1	—	—
112 St E	58 Ave E to 300' E/O Woodland Ave E	5494	5,437	1,040	502	103	—	435
112 St E	S Prairie Rd E to 234 Ave E	5589	1,750	1	—	1	—	—
112 St E	Waller Rd E to 50 Ave E	5445	6,288	2	—	2	—	—
112 St E	Waller Rd E to 50 Ave E - Non Eligible TIB	5635	230	2	—	2	—	—
112 St S	Alaska St S to Sheridan Ave S	5520	855	313	56	3	—	254
120 St E	500' E/O 214 Ave E to S Prairie Rd E	5439	1,945	2	—	2	—	—
121 St S / Parkland Transit Ctr	"C" St S to SR-7	5591	260	10	—	10	—	—
122 Ave E / 152 St E	Intersection	5479	194	2	—	2	—	—
128 St E	94 Ave E to SR-161	5595	2,430	1	—	1	—	—
144 St Kpn	At Rocky Ck	5026	15	15	15	—	—	—
144 St NW	At Intersection of Crescent Valley Dr NW	5028	25	25	25	—	—	—
152 St E	600' E/O 94 Ave E to SR-161	5662	4,000	10	—	10	—	—
168 St E	SR-7 to 22 Ave E	5535	13,134	1	—	1	—	—
176 St E	"B" St E to 14 Ave E	5471	4,900	500	—	100	400	—
176 St E	1,000' E/O Canyon Rd E to 300' W/O 78 Ave E	5472	8,530	500	—	100	400	—
176 St E	14 Ave E to 32 Ave E	5536	6,200	500	—	70	400	30
176 St E	32 Ave E to 500' W/O 51 Ave E	5537	7,800	500	—	72	400	28
176 St E	600' E/O 78 Ave E to Gem Heights Dr E	5424	5,729	435	35	—	400	—

Project Summary

2004 Funding Sources
(All Costs in \$1000's)

PROJECT NAME	PROJECT LIMITS	CRP #	Total Cost	2004 Funding Sources				
				2004 Budget	Carry-over	Road Fund	Real Estate Excise Tax	Other
176 St E	Gem Heights Dr E to SR-161	5496	4,378	300	—	—	300	—
176 St E Ext	Prop 130 Ave E to BR #31195-A Calistoga Ave	5444	27,900	10	—	10	—	—
184 St E	78 Ave E to Gem Heights Dr E	5596	692	550	—	550	—	—
192 St E	38 Ave E to Canyon Rd E	5487	1,200	50	—	50	—	—
198 Ave E	120 St E to Rhodes Lake Rd E	5674	1,410	15	—	—	—	15
198 Ave E	144 St E tp 120 St E	5675	8,000	25	—	—	—	25
198 Ave E / 199 Ave Ct E	Rhodes Lake Rd to 104 St E	5676	8,700	400	—	289	—	111
2003 Asphalt Overlay	Various Roads Countywide	5646	796	2	—	2	—	—
214 Ave E	120 St E to Bonney Lk City Limits	5659	920	1	—	1	—	—
214 Ave E	Approx 150' S/O 91 St E to 91 St E	5597	166	2	—	2	—	—
214 Ave E / 218 Ave E Relocation	At 40 St E	5263	1,720	1,074	—	1,036	—	38
224 St E	38 Ave E to 46 Ave E	5638	129	2	—	2	—	—
304 St E	SR-7 to SR-161	5673	357	357	—	120	—	237
3R Program - 2004	Various Roads Countywide	5649	525	500	—	500	—	—
3R Program - 2005	Various Roads Countywide	5669	525	25	—	25	—	—
Totals			\$ 605,255	\$ 38,266	\$ 6,841	\$ 8,409	\$ 11,040	\$ 11,976

Public Works Construction Fund

Public Works Construction Fund

Second REET Fund - Roads

Special Revenue Fund

Departmental Summary:

The Second R. E.E.T. which can only be allocated for infrastructure projects (e.g. roads, sewers, parks, water systems.) was approved in late 2001, to be effective in 2002. The Council approved a general allocation of 75% for Transportation projects and 25% for Parks and Recreation projects.

Budget Highlights:

The 2004 Budget reflects the allocation of these monies as shown below. Funding is provided from prior fund balances (unspent 2002-2003 monies) plus estimated 2004 revenues.

FUNDING SOURCES

	2001 Actual	2002 Actual	2003 Budget	2004 Budget	Absolute Change	Percent Change
Est Use of Begin Fund Balance	\$ —	\$ —	\$ 2,851,300	\$ 7,444,060	\$ 4,592,760	161.1 %
Taxes	—	3,387,040	3,000,000	3,600,000	600,000	20.0
Other Financing Sources	—	—	1,650,000	—	(1,650,000)	(100.0)
Total	\$ —	\$ 3,387,040	\$ 7,501,300	\$ 11,044,060	\$ 3,542,760	47.2 %

PROJECT SUMMARY

Project Name	CRP #	2004 Budget	Funding Sources		2004 Total Revenues
			Prior Fund Balance	2nd REET	
Public Works (75%)					
Canyon Road East	5656	\$ 1,500,000	\$ 1,000,000	\$ 500,000	\$ 1,500,000
Canyon Road East - Northerly Ext	5643	154,000	7,680	146,320	154,000
Canyon Road East / 176th Street East	5657	250,000	—	250,000	250,000
Spanaway Loop Road South Ext	5453	1,436,000	1,436,380	—	1,436,380
SR-704 Cross Base Hwy	5469	5,000,000	5,000,000	—	5,000,000
94 Avenue East	5532	400,000	—	400,000	400,000
176 St E / "B" St E to 14 Ave E	5471	400,000	—	400,000	400,000
176 St E / E/O Canyon Rd E to W/O 78 Ave E	5472	400,000	—	400,000	400,000
176 St E / 14 Ave E to 32 Ave E	5536	400,000	—	400,000	400,000
176 St E / 32 Ave E to W/O 51 Ave E	5537	400,000	—	400,000	400,000
176 St E / E/O 78 Ave E to Gem Heights Dr E	5424	400,000	—	400,000	400,000
176 St E / Gem Heights Dr E to SR-161	5496	300,000	—	300,000	300,000
Total Public Works Construction Projects		11,040,000	7,444,060	3,596,320	11,040,000
Roads Administration Expenses		4,060	—	4,060	4,060
Total Public Works (75%)		\$ 11,044,060	\$ 7,444,060	\$ 3,600,380	\$ 11,044,060

Second REET Fund - Roads
