

Transportation

Transportation Services is a division of the Public Works and Utilities Department. Transportation systems related budgets include the County Road Fund, Airport, Pierce County Ferry Services, Public Works Construction Fund, Transportation Facilities, Equipment Rental and Revolving, and the Roads portion of the Second REET Fund.

Major Accomplishments in 2004

The **Project Engineering Division** completed the design and advertisement for nine transportation projects, including: Spanaway Loop Road South Extension, the first and second phases of the Canyon Road East/176th Street East intersection improvements, traffic signal at Woodland Avenue East/112th Street East intersection, overlay of 304th Street East between SR 7 and SR 161, realignment of 214th Avenue East/218th Avenue East, sidewalk improvements and overlay of 112th Street South and the Lake Tapps Parkway East “Missing Link” from Sumner-Tapps Highway to the 9th/182nd intersection. The Design Report, and the Type, Size, and Location Study for the Canyon Road Northerly Extension project were completed. Staff supervised the release of the State Route 704 (Cross Base Highway) Record of Decision (completing 8 ½ years of environmental process). Further, 10 Right-of-Way Plans, 55 separate environmental documents and permits including eight SEPA checklists, seven Environmental Classification Summaries, eight Biological Assessments, and three Corp of Engineers permits for various transportation projects were completed. Project Engineering administered 45 individual consultant contracts with 26 engineering firms to support many of the projects and initiatives within Transportation Services. These 45 contracts involved 60 task orders totaling nearly \$6,320,000 in consultant services. Consultant Resources and Environmental staff administered nearly \$3,160,000 in consultant services in 2004.

During 2004, Project Engineering made 78 offers, acquired 67 parcels, purchased \$1.23 million in rights-of-way, ordered and reviewed 196 title reports and 55 appraisals, obtained 16 Right of Entry Agreements, relocated one tenant, obtained 25 Driveway Reconstruction Permits, and coordinated the sale of 4.71 acres of property in Lakewood. The Division competed and certified the rights-of-way for eight transportation projects.

As in previous years, the **Program Development Division** was very active in 2004. The more significant accomplishments included a series of Transportation Financing Workshops, and continued work with the TRAAC Committee to establish distribution of the second REET funds. Significant accomplishments of the Transportation Programming Section included: the completion and adoption of the Six-Year Transportation Improvement Program, the Fourteen-Year Ferry Program and the Capital Facilities Plan; the submittal of 23 grant applications for state and federal funding; the preparation, tracking and updating of approximately 199 project matrices; the completion of 27 project cost estimates; and the administration of \$36.4 million in federal grants, \$43.1 million in State Transportation Improvement Board (TIB) grants, and \$9.4 million in Rural Arterial Program and other grants. Staff secured a \$750,000 Public Lands & Highway Discretionary grant; \$7.8 million from the State

Transportation Improvement Board (TIB); and \$895,000 in Federal CMAQ & STP funding. Staff negotiated interlocal agreements with eight local agencies to coordinate efforts and funding responsibilities associated with capital improvement projects. The Section also coordinated with Washington State Department of Transportation (WSDOT) on mutual projects including impacts to County roads associated with construction of the Tacoma Narrows Bridge.

Section Contents	
Airport Fund.....	295
County Road Fund.....	299
Equipment Rental and Revolving.....	305
Pierce County Ferry Services	309
Public Works Construction Fund	311
Second REET Fund - Roads	317
Transportation Facilities.....	319

In 2004, the Transportation Planning Section worked with the Graham Community Planning Board (CPB) to complete their local Draft Transportation Recommendations. Staff worked with the Alderton-McMillin and Mid-County CPBs developing the transportation components of their respective plans. In working with the Alderton-McMillin CPB, the Section laid the groundwork for the Rhodes Lake Road Corridor Study and

Transportation

the South Plateau Access Study. The Section also continued to work with employees, employers, jurisdictions, and agencies affected by the Commute Trip Reduction Law. 2004 was a benchmark year for the **Road Maintenance and Operations Division** in the delivery of both quality and quantity of road maintenance products and services. Through several years of adapting to the effects increased regulatory requirements, staffing changes due to attrition, and the challenges of an ever-tightening budget, the Division continued to hone its ability to maintain and preserve the County's public transportation network at its highest functional level.

The Division successfully delivered the annual Road Maintenance and Preservation Program and met or exceeded nearly all general roadway maintenance goals in 2004. Detailed maintenance production quantities include: 1,271 labor hours patching potholes, 514 miles of road shoulder graded and shaped, more than 65,000 feet of drainage ditch cleaned and graded, 1,831 storm drain basins and 67,084 feet of storm drain pipe cleaned, 8,704 lane miles swept, 2,970 miles of roadside vegetation cut, over 385,124 pounds of roadside litter removed, and 26,509 labor hours logged controlling traffic in support of these accomplishments.

2004 began with the most significant snow storm in Pierce County in over seven years. Emergency Response crews plowed 14,703 lane miles, and applied 5,261 tons of ice sand to affected roads in response to this storm event. Throughout the year crews have also logged 2,908 labor hours in response to localized flooding and mudslides within the road right of way.

The Division re-aligned the structure of the Pavement Preservation program with an emphasis on maximizing the efficiencies by building strong, specialized teams to deal with large surface treatments. The work of these teams exceeded production efficiency goals by over 12% while meeting or exceeding quality standards. As a result, some of the surface preparation work planned for 2005 was completed ahead of schedule. The 2004 overall pavement condition rating is near 78, up from the 2003 score of 75. Detailed surface treatment production quantities include: 10,131 gallons of liquid crack filler applied, 33,849 tons of asphalt pre-leveling, 137 lane miles chip sealed, and 7,378 tons of failed pavement ground and replaced.

The Division focused efforts on improving workplace safety, training, and recognition. The Division's training coordinator and Safety Committee placed special emphasis on implementing training and awareness classes designed to target problem areas. Over the year, the number of injuries was 15, less than half of the historic average of 34 per year. The severity of each injury that did occur also decreased, with the average cost of each claim dropping to less than half of historic levels. The Division's efforts to improve safety also included an emphasis on a safety-oriented employee recognition program, based on consistently demonstrating exceptional safety leadership, practice and awareness.

The **Traffic Division** continued to provide comprehensive traffic maintenance and traffic engineering services throughout the County road system, and contract-based traffic maintenance services for several cities in 2004, including Lakewood, University Place, and Edgewood. The Division accomplished 1,857 line miles of paint striping; 4,330 marking units; repaired 22,000 traffic signs; and conducted 119,000 sign inspections. In maintaining traffic signal and illumination systems, the Division responded to 800 signal call-outs; performed 1,000 preventive signal system checks; and conducted routine re-lamping of over 4,000 signals.

The Division provided a variety of traffic engineering and design services which led to several operational enhancements on the County road system. Notable projects included a new interim traffic signal at Woodland Avenue & 112th Street East, and all of the traffic design support for the construction of Canyon Road & 176th Street East. Other new signals were put into operation at Sumner-Tapps Hwy & 16th Street East, Military Road & Shaw Road East, and 38th Avenue & 176th Street East.

Development-related traffic impact analysis review and related support to Planning and Land Services continued at a significant level and workload. One of the notable off-site improvements was the construction of turn lanes and a new traffic signal at Mundy Loss Road & 120th Street East, as a mitigation measure for the new White River High School. All school signing on County roads was reviewed and upgraded to comply with the new Federal standards for school sign design. A new traffic buttoning truck operation to install raised pavement markers was implemented, immediately increasing production while enhancing worker safety. More than 43,700 raised pavement markers were installed or replaced.

In addition to performing its primary duties of procurement, maintenance, and training related to the **Equipment Services Division** (ESD) equipment fleet, there were three major accomplishments in 2004..

Transportation

The central maintenance facility's roof was renewed to extend its useful life. The ESD intranet website was significantly upgraded to provide timely equipment usage information for customers. ESD participated in the scoping and needs assessment process for the proposed Combined Maintenance Facility.

DEPARTMENT BUDGETS

Department Name	2004 Budget	2005 Budget	Absolute Change	Percent Change
Airport Fund	\$ 585,610	\$ 535,830	\$ (49,780)	(8.5) %
County Road Fund	66,830,370	62,991,550	(3,838,820)	(5.7)
Equipment Rental & Revolving	10,240,150	12,706,240	2,466,090	24.1
Pierce County Ferry Services	7,211,370	13,947,330	6,735,960	93.4
Public Works Construction Fund	38,266,000	53,313,000	15,047,000	39.3
RID Construction Fund	30,000	—	(30,000)	(100.0)
Second REET Fund - Roads	11,044,060	10,736,680	(307,380)	(2.8)
Transportation Facilities	5,304,000	26,600,000	21,296,000	401.5
Total Transportation	\$ 139,511,560	\$ 180,830,630	\$ 41,319,070	29.6 %

Transportation

Airport Fund

Enterprise Fund

The mission of the Pierce County Airport (Thun Field) is to support general utility aviation operations and maximize fiscal self-supporting capabilities.

Departmental Summary:

The Airport Fund provides for the operation, maintenance, and capital improvements at Pierce County Airport - Thun Field. This fund's goal is to be self-supporting through user fees and tenant charges.

The Airport is classified as General Aviation by the Federal Aviation Administration. The Airport's design level is General Utility, Stage I which supports primarily the personal and recreational needs and secondarily the business needs of aviation in southeastern Pierce County.

Budget Highlights:

The proposed 2005 Airport budget reflects the following:

- a) Inflationary cost increases for on-going operations;
- b) An increased allocation for repairs; and
- c) Allocations for Master Plan update and an Economic Development Study.

Performance Measure

- 1) Design, contract for and remove trees along the east property boundary of the Pierce County Airport which will enhance the safety of air operations. *(Goal A)*

FUNDING SOURCES						
	2002 Actual	2003 Actual	2004 Budget	2005 Budget	Absolute Change	Percent Change
Est Use of Begin Fund Balance	\$ —	\$ —	\$ 63,270	\$ —	\$ (63,270)	(100.0) %
Taxes	133,484	179,242	144,000	150,000	6,000	4.2
Intergovernmental Revenue	2,532,624	133,482	—	—	—	—
Miscellaneous Revenue	355,522	377,365	378,340	385,830	7,490	2.0
Other Financing Sources	(1,511)	351	—	—	—	—
Total	\$ 3,020,119	\$ 690,440	\$ 585,610	\$ 535,830	\$ (49,780)	(8.5) %

Airport Fund

EXPENDITURES

	2002 Actual	2003 Actual	2004 Budget	2005 Budget	Absolute Change	Percent Change
Salaries & Wages	\$ 75,227	\$ 77,825	\$ 84,770	\$ 86,390	\$ 1,620	1.9 %
Personnel Benefits	18,615	18,587	26,470	28,990	2,520	9.5
Supplies	12,568	6,073	8,570	9,370	800	9.3
Other Services & Charges	255,053	320,836	247,570	330,100	82,530	33.3
Intergovernmental Services	3,373	3,395	3,500	3,360	(140)	(4.0)
Capital Outlays	(28,775)	—	169,600	32,500	(137,100)	(80.8)
Debt Service-Principal	—	—	32,720	34,180	1,460	4.5
Interest	5,731	13,738	12,410	10,940	(1,470)	(11.8)
Total	\$ 341,792	\$ 440,454	\$ 585,610	\$ 535,830	\$ (49,780)	(8.5) %

STAFFING SUMMARY

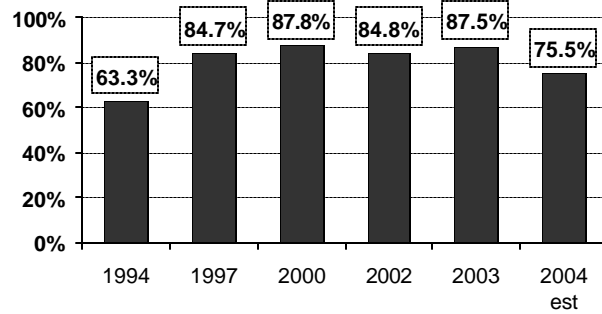
	2000 FTE	2001 FTE	2002 FTE	2003 FTE	2004 FTE	2005 FTE
Airport Operations Mgr	1.00	1.00	1.00	1.00	1.00	1.00
Facilities Maint Tech	0.50	0.60	0.60	0.60	0.60	0.60
Total	1.50	1.60	1.60	1.60	1.60	1.60

WORKLOAD SERVICE DATA

	Unit of Measure	2000 Actual	2001 Actual	2002 Actual	2003 Actual	2004 Estimate	2005 Estimate
Tiedowns rented	Tiedowns	48	48	48	48	48	48
Hangar space rented	Spaces	50	50	50	50	50	50
Take offs and landings	Occurrence	100,000	100,000	105,000	107,000	108,000	108,000

BUDGET RATIOS

Extent of Self-Support



- ❖ From 1994 to 2004 the extent of self-support increased by 19%.

Airport Fund

County Road Fund

Special Revenue Fund

The mission of Transportation Services is to provide transportation infrastructure including planning, design development, construction, contract administration, maintenance and operations, ferry and airport operations, and equipment services.

Departmental Summary:

The Transportation Services Division of the Public Works and Utilities Department plans, improves, and maintains the transportation system. Major revenue sources of the Road Fund are dedicated property taxes and state allocated motor vehicle fuel excise taxes. The transportation system consists of 1,500 miles of roadway, 150 bridges, 60 traffic signals, and a ferry operation. Drainage facilities keep the roadways free of water. Shop facilities stockpile materials and garage the 200 road maintenance vehicles necessary for keeping the roads open and safe. Projections indicate that the highway system must handle a 50% increase in vehicle miles traveled over the next 10 years to accommodate economic development in the County. The current value of the system is over \$1 billion, or \$1,500 per capita.

The Transportation Services Division employs staff to plan, build and maintain a safe and efficient road network for the citizens of Pierce County. The Department is organized into two operating divisions: Engineering and Maintenance. The Engineering Division's responsibilities include planning, designing and constructing road and bridge projects, establishing standards for roadway construction, and maintaining the County Road Log. The Maintenance Division performs over 100 functions to keep the transportation system operating at its original "as built" condition and capacity.

Budget Highlights:

The 2005 budget for the County Road Fund is 5.7% below 2004. This budget includes:

- a) \$17.2 million in funds allocated for a capital projects transfer to the Public Works Construction fund; and
- b) The addition of 2.0 positions (traffic signal tech and a safety coordinator).

This proposed budget will require the use of \$8.4 million in prior fund balance to support the requested staffing, services, and programs (most of which would be used for "one-time capital expenses").

Performance Measures

- 1) Develop and submit the Six-Year Transportation Improvement Program, Annual Road Program and the Transportation Element of the Capital Facilities Plan for adoption by the County Council by November 30, 2005, to facilitate the planning and implementation of necessary transportation system improvements. (Goals A, B) right-of-way, contract administration) for 12 projects identified in the County's Annual Road Program so that those projects may be advertised for bid by December 31, 2005, with implementation of a new Project Delivery Process. (Goals A, B)
- 2) Provide project management services (engineering, design, environmental assessment documentation, acquisition of
- 3) Paint 1,800 line miles of roadway striping, conduct 120,000 routine sign inspections, and perform more than 800 preventive maintenance checks of traffic signal locations. (Goals A, H)

County Road Fund

- 4) Implement an Automated Vehicle Locating system that uses Global Positioning technology (GPS/AVL) for up to fifty vehicles; including dump trucks, pick up trucks, street sweepers, and storm drain cleaning vehicles. Annual savings of \$50,000 are anticipated due to increased management and operational efficiencies and enhanced employee safety. (Goal H)
- 5) Plan and implement a consistent and ongoing road maintenance asphalt overlay program that will provide adequate restorative value to approximately 20 centerline miles of arterial roadway by September 30. This will provide for preservation of Pierce County pavements at lowest lifecycle cost. (Goals A H)

FUNDING SOURCES

	2002 Actual	2003 Actual	2004 Budget	2005 Budget	Absolute Change	Percent Change
Est Use of Begin Fund Balance	\$ —	\$ —	\$14,092,720	\$ 8,410,730	\$ (5,681,990)	(40.3) %
Taxes	33,418,275	36,884,780	36,939,800	38,789,290	1,849,490	5.0
Licenses & Permits	78,905	76,151	86,000	73,100	(12,900)	(15.0)
Intergovernmental Revenue	13,568,930	13,731,037	14,277,650	14,473,030	195,380	1.4
Charges for Services	1,003,513	567,980	1,202,000	953,000	(249,000)	(20.7)
Miscellaneous Revenue	98,502	122,466	63,200	60,000	(3,200)	(5.1)
Other Financing Sources	696,672	538,172	169,000	232,400	63,400	37.5
Total	\$48,864,797	\$51,920,586	\$66,830,370	\$62,991,550	\$ (3,838,820)	(5.7) %

PROGRAM EXPENDITURES

	2004 FTE	2005 FTE	2004 Budget	2005 Budget	Absolute Change	Percent Change
Engineering	86.77	86.73	\$ 5,236,680	\$ 5,198,990	\$ (37,690)	(0.7) %
County Engineer/Admin Svcs	30.57	31.70	22,022,700	9,052,160	(12,970,540)	(58.9)
Program Development	17.00	18.00	2,116,780	2,203,890	87,110	4.1
Roads Maintenance	167.70	167.70	21,898,260	22,718,240	819,980	3.7
Traffic Administration	33.66	33.66	4,598,910	4,678,840	79,930	1.7
Transfer Out Const/Other Serv	—	—	10,957,040	19,139,430	8,182,390	74.7
Total	335.70	337.79	\$66,830,370	\$62,991,550	\$ (3,838,820)	(5.7) %

EXPENDITURE BY ACTIVITY

	County Eng/Admin Services	Engineering	Program Development	Road Maintenance	Traffic	2005 Budget Request Totals	2004 Budget Totals	Absolute Change	Percent Change
Operations									
542XX Road Maintenance	2,000	73,840	—	15,267,560	2,621,120	17,964,520	17,952,140	12,380	0.1
54290 Maintenance Administration	—	—	—	2,309,420	457,700	2,767,120	2,067,020	700,100	33.9
54310 Management	1,024,770	212,290	84,660	345,730	102,570	1,770,020	1,471,230	298,790	20.3
5432X Undistributed Engineering	28,580	3,623,820	383,670	482,530	861,360	5,379,960	5,359,960	20,000	0.4
54330 Data Processing	497,850	—	—	—	—	497,850	475,110	22,740	4.8
54330 Insurance	1,116,810	—	—	—	—	1,116,810	1,000,570	116,240	11.6
54330 Interfund Indirect Transfer	1,819,700	—	—	—	—	1,819,700	2,152,410	(332,710)	(15.5)
54330 Support Services	3,499,870	35,290	270,300	—	—	3,805,460	3,965,460	(160,000)	(4.0)
54340 Planning	—	—	1,188,090	359,960	4,330	1,552,380	1,436,760	115,620	8.0
54360 Training	205,480	346,980	85,990	436,210	87,450	1,162,110	912,510	249,600	27.4
54370 Undistributed Labor Costs	354,410	906,770	191,180	1,956,640	422,000	3,831,000	3,720,490	110,510	3.0
54410 Facility Construction	—	—	—	120,000	—	120,000	13,604,500	(13,484,500)	(99.1)
54420 Facility Maintenance	502,690	—	—	1,440,190	122,310	2,065,190	1,755,170	310,020	17.7
Subtotal Operations	9,052,160	5,198,990	2,203,890	22,718,240	4,678,840	43,852,120	55,873,330	(12,021,210)	(21.5)
Transfers									
59700 Transfer Out - Other Interfund Serv	308,780	—	—	42,070	—	350,850	388,440	(37,590)	(9.7)
59700 Transfer Out - Equipment	—	—	—	120,000	—	120,000	300,000	(180,000)	(60.0)
59700 Transfer Out - Constr	17,192,000	—	—	—	—	17,192,000	8,409,600	8,782,400	104.4
59700 Transfer Out - Ferry	11,730	—	—	—	—	11,730	504,000	(492,270)	(97.7)
59700 Transfer Out - GIS & Orthos	364,850	—	—	—	—	364,850	355,000	9,850	2.8
59700 Transfer Out - Traffic Enforcement	1,100,000	—	—	—	—	1,100,000	1,000,000	100,000	10.0
Subtotal Transfers	18,977,360	—	—	162,070	—	19,139,430	10,957,040	8,182,390	74.7
Total	\$ 28,029,520	\$ 5,198,990	\$ 2,203,890	\$ 22,880,310	\$ 4,678,840	\$ 62,991,550	\$ 66,830,370	\$ (3,838,820)	(5.7)
2005 Full Time Equivalents	31.70	86.73	18.00	167.70	33.66	337.79			

County Road Fund

STAFFING SUMMARY

	2000 FTE	2001 FTE	2002 FTE	2003 FTE	2004 FTE	2005 FTE
Dir – Public Works & Util	0.51	0.51	0.51	0.51	0.51	0.42
County Engineer	1.00	1.00	1.00	1.00	1.00	1.00
Special Asst to Dir PW&U	—	—	—	—	—	0.21
Deputy PW & Utilities Dir	0.51	0.51	0.51	0.51	0.51	0.42
Spec Asst to Exec-Transportation	—	—	—	1.00	1.00	1.00
Public Works Safety Coord	—	—	—	—	—	1.00
Maintenance Manager	1.00	1.00	1.00	1.00	1.00	1.00
Administrative Svcs Mgr	1.00	1.00	0.87	0.87	0.87	0.87
Program Development Mgr	1.00	1.00	1.00	1.00	1.00	1.00
Traffic Engineer	1.00	1.00	1.00	1.00	1.00	1.00
Assoc Traffic Engineer	1.00	1.00	1.00	1.00	1.00	1.00
Road Maintenance Supt	1.00	1.00	2.00	2.00	2.00	2.00
Civil Engineer	44.80	46.50	46.50	44.50	45.47	45.43
Traffic Operations Supv	1.00	1.00	1.00	1.00	1.00	1.00
Right of Way Agent	6.00	6.00	7.00	7.00	7.00	7.00
Traffic Signal Tech	5.00	5.00	5.00	5.00	5.00	6.00
Admin Program Mgr	0.96	0.96	0.96	0.96	0.96	0.96
Airport Administrator	—	—	—	1.00	1.00	1.00
Fiscal Services Mgr	—	—	—	—	1.00	1.00
Planner	5.00	5.00	5.00	5.00	5.00	5.00
Public Works Supv	10.00	10.00	9.00	10.00	10.00	18.00
Engineering Tech	49.00	50.00	50.00	54.00	58.30	58.30
Maintenance Office Admin	1.00	1.00	—	—	—	1.00
Heavy Equipment Operator	—	21.00	21.00	18.00	21.00	21.00
Contract Compliance Ofcr	1.00	1.00	1.00	1.00	1.00	1.00
Environmental Biologist	2.00	2.00	3.00	3.00	3.00	3.00
Dept Info Tech Spec	2.00	3.00	2.00	3.00	3.42	3.42
Maintenance Tech	115.92	113.92	79.92	80.92	87.70	84.70
Traffic Sign Technician	12.00	12.00	12.00	12.00	12.00	12.00
Accounting Assistant	4.80	4.80	5.60	5.60	5.80	5.80
Contract Compliance Spec	1.00	1.00	1.00	1.00	1.00	1.00
Office Assistant	16.00	16.00	15.66	15.66	16.16	15.46
Supervisory Admin Asst	—	—	—	—	1.00	1.00
Training Coordinator	—	—	—	1.00	1.00	1.00
Administrative Assistant	0.87	—	—	0.85	1.00	1.00
Records Specialist	1.00	1.00	1.00	1.00	1.00	1.00
Maintenance Office Mgr	5.00	5.00	5.00	5.00	5.00	5.00
Administrative Aide	0.98	1.85	1.85	1.00	2.00	1.80
Contract Compl Field Mntr	1.00	1.00	1.00	1.00	1.00	1.00
Maintenance Worker	—	—	33.00	30.00	23.00	23.00
Maintenance Crew Chief	5.00	5.00	5.00	5.00	5.00	—
Custodian	3.00	2.65	2.65	1.90	—	—
Clerical Aide	—	1.00	1.00	1.00	—	—
Grant Accountant	1.00	1.00	1.00	1.00	—	—
Equipment Operator	—	—	—	3.00	—	—
Public Works Project Coord	1.00	1.00	1.00	—	—	—
Maintenance Spec	21.00	1.00	—	—	—	—
Exec Dir - Operations	0.50	—	—	—	—	—
Executive Secretary	0.50	—	—	—	—	—
Total	326.35	328.70	327.03	330.28	335.70	337.79

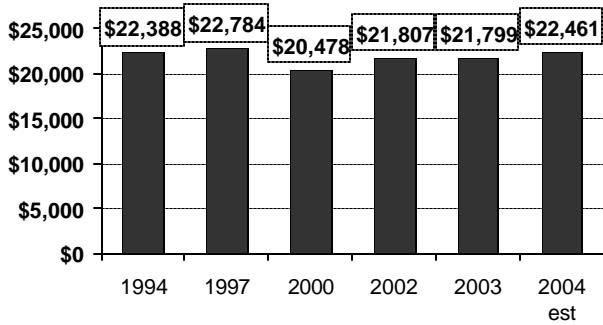
County Road Fund

WORKLOAD SERVICE DATA

	Unit of Measure	2000 Actual	2001 Actual	2002 Actual	2003 Actual	2004 Estimate	2005 Estimate
Pothole premix patching	Manhour	3,604	3,716	2,907	1,653	1,112	1,900
Spreader box patching	Ton	949	3,197	6,275	10,805	6,250	2,270
Seal coating	Lane Mile	275	285	297	266	152	381
Skin patching	Sq. Yard	26,894	23,805	9,929	7,536	4,000	4,100
Grading & shaping gravel road	Mile	86	106	101	55	97	103
Haul aggregate for gravel road	Ton	2,397	2,073	3,809	2,749	2,660	2,670
Grading & shaping gravel shld	Sh. Mile	466	549	616	889	623	716
Hauling aggregate - gravel shld	Ton	16,247	20,007	21,199	20,338	16,567	18,000
Mowing Shoulders	Sh. Mile	1,619	1,465	1,655	1,680	2,004	2,366
Ditching:							
With backhoe/Drott	Lineal Feet	31,437	24,047	46,243	60,528	52,246	52,750
With belt Loader/Ditchmaster	Ditch Mile	196	58	79	577	81	87
Manual clean culvert ends & grates	Each	3,252	4,369	2,124	6,456	3,339	6,187
Mech. clean drainage structure	Each	3,797	2,974	7,211	2,832	2,915	7,571
Cleaning with jet rodder	Lineal Feet	148,146	134,356	52,152	67,419	56,284	123,984
Repair/Replace:							
Culvert pipe	Lineal Feet	4,550	4,316	4,312	3,423	3,264	3,360
Catch basin	Each	33	37	53	76	68	87
Driveway/Drainfield	Each	21	9	33	11	25	55
Erosion control	Manhour	859	928	1,584	902	1,440	1,680
Grate	Each	38	71	52	95	380	409
Paint culvert marks	Each	135	178	114	145	1,950	1,950
Bridge repair	Manhour	905	392	179	284	750	777
Luminaire routine	Each	458	136	-	233	500	280
Signage activity	Each	166,420	142,615	137,850	156,790	155,000	157,000
Pavement markings	Each	7,442	2,065	5,944	5,277	5,300	5,400
Pavement striping	Mile	1,858	1,376	1,833	2,030	2,000	2,000
Signal electronics repair	Manhour	1,075	-	-	1,040	1,000	1,100
Signal cabinet	Intersection	509	241	123	474	485	500
Signal routine	Intersection	867	526	951	888	900	925
Signal misc. intersection repairs	Each	404	174	-	388	400	420
Signal relamping	Each	2,727	1,747	2,635	3,914	4,000	4,100
Guardrail repair	Manhour	1,088	2,080	3,671	2,204	2,775	3,100
Plowing and sanding	Lane Mile	999	3,613	4,413	2,890	4,700	4,795
Sanding	Ton	1,484	596	2,288	1,076	2,100	2,200
Front end broom	Curb Mile	2,607	3,792	3,365	3,069	3,900	4,011
Self-Propelled/Self-Load. sweep	Curb Mile	2,627	5,014	3,006	4,206	6,449	8,921
Flushing	Curb Mile	552	438	231	199	96	96
Rotary brush cutter	Sh. Mile	573	996	716	769	830	873
Brushing and chipping	Sh. Mile	5,837	5,539	100	124	107	119
Litter pickup	Manhour	6,030	5,794	6,512	1,776	4,417	5,132
Cut and fill slope repairs	Manhour	529	1,378	763	1,481	1,724	1,779
Maint. admin.-field supervision	Manhour	16,045	17,533	17,942	16,117	15,300	15,300
Maint. admin.-office support	Manhour	7,834	11,230	7,785	8,920	8,320	8,320
Training	Manhour	3,584	4,122	1,422	3,190	3,544	6,050

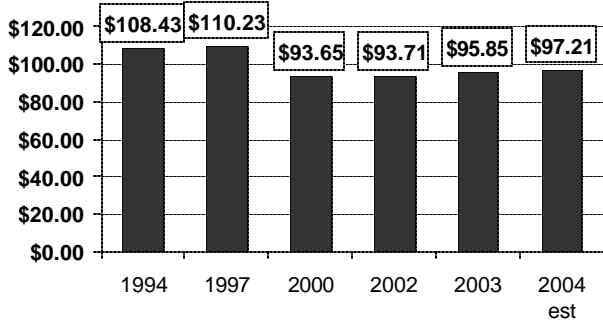
BUDGET RATIOS

Expense per Mile of Road



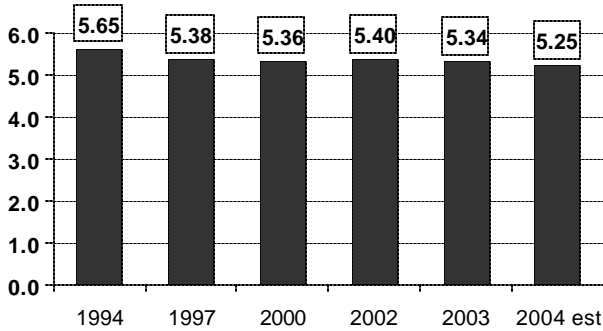
❖ From 1994 to 2004 the total expense per mile of road maintained in the County service area was unchanged after adjusting for inflation.

Expense per Capita



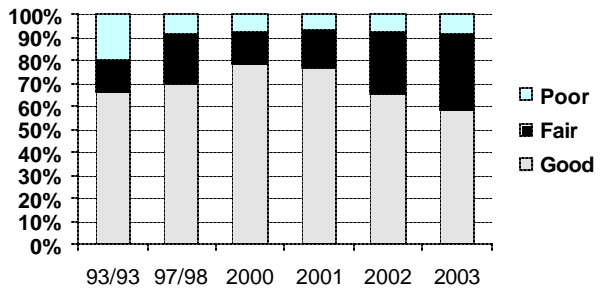
❖ From 1994 to 2004 the total expense per County resident in the County service area decreased 10% after adjusting for inflation.

Miles of Road per Employee



❖ From 1994 to 2004 the average number of miles maintained per Road Department employee decreased 7%.

Pavement Surface Condition



❖ From 1993/1994 to 2003, roads with surface rating of good or fair increased 15%. The rating scale changed somewhat in 1998 to align with current standards.

Equipment Rental and Revolving

Internal Service Fund

The mission of the Equipment Services Division is to provide professional and competitive procurement, maintenance and disposal of transportation and construction equipment; to ensure safe operating equipment; and to meet the equipment services needs of County Roads, Sewer Utility, Parks and Recreation Services and Surface Water Management.

Departmental Summary:

The Equipment Services Division of the Public Works and Utilities Department is responsible for the purchase, maintenance, and repair of County Road, Utility, River Improvement, and Parks Department equipment. Repairs and preventive maintenance work is performed at the Central Maintenance Shop garage and at five outlying shops located at Puyallup, Elk Plain, Chambers Creek, Purdy and River Improvement.

The Central Maintenance Shop maintains the primary inventory of vehicle supplies and parts, and utilizes an automated system to track the parts inventory. The faster fleet management system, which compiles data to analyze performance, downtime, backlog, and frequency of repair data, has been implemented at all Equipment Service Division shops.

The ER&R Fund also provides material (rocks, paint, traffic signals, etc.) for County Road operations.

Budget Highlights:

The 2005 Equipment Rental and Revolving Fund reflect a 24.1% budget increase over 2004. This increase results from the fact that the allocation for Vehicle Replacements and New Vehicle purchases is much higher in 2005 than was the case in 2004.

FUNDING SOURCES

	2002 Actual	2003 Actual	2004 Budget	2005 Budget	Absolute Change	Percent Change
Est Use of Begin Fund Balance	\$ —	\$ —	\$ —	\$ 2,069,150	\$ 2,069,150	∞ %
Charges for Services	3,122,901	2,954,983	3,338,000	3,435,500	97,500	2.9
Miscellaneous Revenue	6,445,535	6,734,295	6,205,150	6,811,590	606,440	9.8
Contributed Capital	561	—	—	—	—	—
Other Financing Sources	238,922	1,328,778	697,000	390,000	(307,000)	(44.0)
Total	\$ 9,807,919	\$ 11,018,056	\$ 10,240,150	\$ 12,706,240	\$ 2,466,090	24.1 %

PROGRAM EXPENDITURES

	2004 FTE	2005 FTE	2004 Budget	2005 Budget	Absolute Change	Percent Change
Equipment Operating/Repair Srv	24.47	24.47	\$ 3,846,550	\$ 3,964,890	\$ 118,340	3.1 %
Capital Expenses	—	—	3,093,600	5,375,850	2,282,250	73.8
Revolving Account Expenses	—	—	3,300,000	3,365,500	65,500	2.0
Total	24.47	24.47	\$ 10,240,150	\$ 12,706,240	\$ 2,466,090	24.1 %

Equipment Rental and Revolving

STAFFING SUMMARY

	2000 FTE	2001 FTE	2002 FTE	2003 FTE	2004 FTE	2005 FTE
Dir – Public Works & Util	0.05	0.05	0.05	0.05	0.05	0.04
Deputy PW & Utilities Dir	0.05	0.05	0.05	0.05	0.05	0.04
Special Asst to Dir PW&U	—	—	—	—	—	0.02
Administrative Svcs Mgr	—	—	0.13	0.13	0.13	0.13
Equipment Svc Manager	1.00	1.00	1.00	1.00	1.00	1.00
Mechanic , Heavy DT LD	—	—	1.00	1.00	1.00	1.00
Equipment Supervisor	1.00	1.00	1.00	1.00	1.00	1.00
Mechanic, Heavy Duty-ASE	—	—	5.00	4.00	4.00	4.00
Mechanic Heavy Duty	7.00	7.00	2.00	3.00	3.00	3.00
Mechanic-ASE	—	—	4.00	4.00	3.00	3.00
Mechanic	8.00	8.00	4.00	4.00	5.00	5.00
Equipment Oper Instructor	1.00	1.00	1.00	1.00	1.00	1.00
Equipment Svc Attendant	1.00	1.00	1.00	1.00	1.00	1.00
Dept Info Tech Spec	—	—	—	—	0.04	0.04
Parts Specialist Lead	1.00	1.00	1.00	1.00	1.00	1.00
Accounting Assistant	1.00	1.00	1.20	1.20	1.00	1.00
Parts Specialist	2.00	2.00	2.00	2.00	2.00	2.00
Office Assistant	—	—	—	—	0.20	0.20
Mechanic, Heavy Duty Lead	1.00	1.00	—	—	—	—
Total	24.10	24.10	24.43	24.43	24.47	24.47

WORKLOAD SERVICE DATA

	Unit of Measure	2000 Actual	2001 Actual	2002 Actual	2003 Actual	2004 Estimate	2005 Estimate
Active vehicles in fleet	Vehicles	432	448	440	442	445	445
Work orders processed per year	Work Order	5,392	5,318	5,209	4,989	5,000	5,100
Total vehicle operating hours	Hours	378,545	376,911	394,015	406,181	407,000	408,000

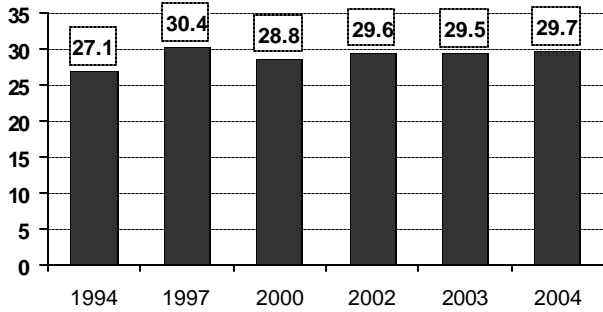
Equipment Rental and Revolving

EQUIPMENT PURCHASES

Department	Qty	Equipment Description	2005 Budget
Replacement Equipment (funded by replacement reserve)			
Road Fund	2	Tow Broom	\$ 44,600
	3	Brushcutter Mower	306,300
	3	Brush Chipper	105,300
	1	Chip Spreader	253,200
	7	Small SUV 4X4	175,000
	2	Ditchmaster Truck	535,000
	10	5 Yard Dump Truck with Plow	1,300,000
	3	Towable Air Compressor	63,750
	3	1 ton Flatbed Pickup Truck	101,250
	1	Large SUV	44,650
	3	Full Size Van	75,000
	1	1/4 ton Extended Cab 4X4 with Canopy	22,000
	2	Full size SUV 4X4	53,000
	1	1 ton Crew Cab Pickup Truck with Canopy	28,000
	1	1 ton Flatbed Pickup Truck with Attachments	34,500
	1	Mini Van	21,000
	4	Mower Broom Combinations	340,000
Parks	3	Wide Area Mower	139,500
	1	Triplex Mower	13,500
	1	Steam Cleaner with Trailer	12,500
	1	Small Tractor with Attachments	30,000
	1	1 ton Cargo Van with Rack	23,300
	2	1 ton Flatbed Pickup Truck	57,000
	1	5 yard Dump Truck	120,000
Sewer Utility	1	Sewer Jet Truck	158,000
	1	1 ton Cargo Van with Interior Cabs	39,000
	1	3/4 ton Extended Cab 4X4 Pickup Truck	23,250
	1	Small SUV 4X4	25,000
	1	Sewer Pump Truck	111,250
	1	Flatbed Truck with Crane	125,000
	1	Mini Van	21,000
	65	Subtotal	4,400,850
New Equipment (funded by Department listed)			
Road Fund	2	Upgrades to Existing Water Trucks	120,000
Sewer Utility	1	Combination TV/Grout Truck	230,000
	3	Subtotal	350,000
Other			
	1	Misc Equip Unscheduled Replacements	450,000
	1	Fire Supression System	175,000
	2	Subtotal	625,000
	70	Total	\$ 5,375,850

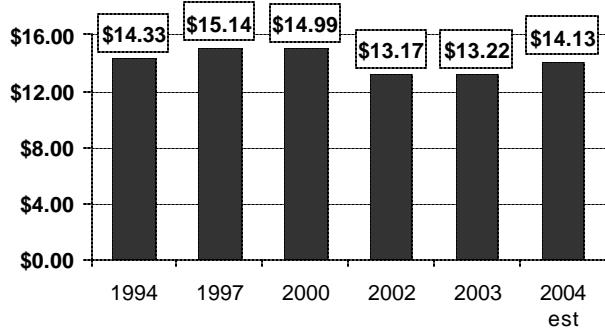
BUDGET RATIOS

Active Vehicles per Mechanic



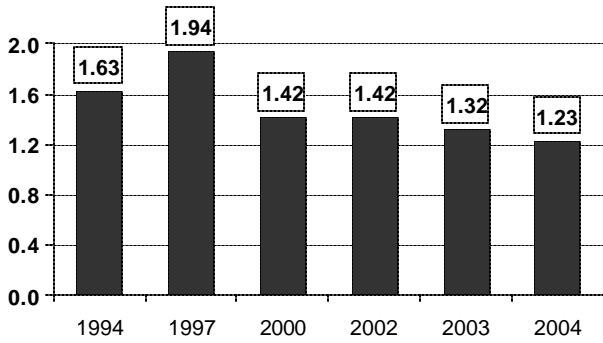
❖ From 1994 to 2004 the number of active vehicles per mechanic increased 10%.

Operating Cost per Hour



❖ From 1994 to 2004 the operating cost per hour of vehicle usage decreased 1% after adjusting for inflation.

Work Orders per 100 Hours of Operation



❖ From 1994 to 2004 the number of work orders per 100 hours of vehicle operation decreased 25%.

Pierce County Ferry Services

Enterprise Fund

Departmental Summary:

The Pierce County Ferry Services fund provides for the operation, maintenance, and capital improvement for the Pierce County ferry system, which consists of two ferry boats and the ferry landings at Steilacoom, Ketron Island, and Anderson Island. The fund's financial goal is to be as self-supporting as possible primarily through a mix of fare revenue, state ferry subsidy, and gas tax revenue. The County Road Fund subsidizes any revenue shortfall for the Pierce County Ferry Services fund.

The Pierce County ferry system is the only public method of transportation for people and goods for Ketron and Anderson island. Over 365,000 persons are transported to and from these islands annually. Outside contracted services are utilized to provide day to day operations of the ferry boats and ticket sales.

This fund also includes the debt servicing of the \$3,150,000 State loan for the construction of a new ferry. The debt outstanding on December 31, 2004 is \$1,481,871. The interest rate is 1% payable annually on July 1.

Budget Highlights:

The Ferry Service budget for 2005 reflects the following items of note:

- a) Ferry service operating expenses;
- b) The construction of a new ferry vessel (total cost = \$10,843,000 most of which will be expended in 2005), and
- c) Anderson Island pontoons and apron replacement (\$1,300,000).

Performance Measures

- 1) Complete the construction of a new 54 car ferry vessel by November 2005. This will assist in meeting existing and future capacity requirements. Concurrently, the process to surplus the ferry Steilacoom will begin. (Goals A, H)

FUNDING SOURCES

	2002 Actual	2003 Actual	2004 Budget	2005 Budget	Absolute Change	Percent Change
Est Use of Begin Fund Balance	\$ —	\$ —	\$ 663,820	\$ 2,435,200	\$ 1,771,380	266.8 %
Intergovernmental Revenue	199,519	375,977	981,350	4,339,000	3,357,650	342.1
Charges for Services	1,220,892	1,254,383	1,480,400	1,360,000	(120,400)	(8.1)
Miscellaneous Revenue	896,999	2,528	52,800	155,000	102,200	193.6
Other Financing Sources	645,113	540,160	4,033,000	5,658,130	1,625,130	40.3
Total	\$ 2,962,523	\$ 2,173,048	\$ 7,211,370	\$13,947,330	\$ 6,735,960	93.4 %

Pierce County Ferry Services

EXPENDITURES

	2002 Actual	2003 Actual	2004 Budget	2005 Budget	Absolute Change	Percent Change
Salaries & Wages	\$ 103,621	\$ 85,459	\$ 92,230	\$ 116,810	\$ 24,580	26.7 %
Personnel Benefits	24,549	18,944	23,490	28,480	4,990	21.2
Supplies	149,650	207,775	206,530	267,650	61,120	29.6
Other Services & Charges	2,234,458	1,760,893	2,537,210	2,688,330	151,120	6.0
Intergovernmental Services	—	18,363	—	—	—	—
Capital Outlays	1,544	(412)	4,150,000	10,646,000	6,496,000	156.5
Debt Service-Principal	—	—	185,240	185,240	—	—
Interest	19,450	17,597	16,670	14,820	(1,850)	(11.1)
Total	\$ 2,533,272	\$ 2,108,619	\$ 7,211,370	\$ 13,947,330	\$ 6,735,960	93.4 %

STAFFING SUMMARY

	2000 FTE	2001 FTE	2002 FTE	2003 FTE	2004 FTE	2005 FTE
Dir-Public Works & Util	—	—	—	—	—	0.04
Deputy PW & Utilities Dir	—	—	—	—	—	0.04
Special Asst to Dir PW&U	—	—	—	—	—	0.02
Civil Engineer	0.20	0.50	0.50	0.50	0.53	0.57
Admin Program Mgr	0.04	0.04	0.04	0.04	0.04	0.04
Maintenance Tech	0.08	0.08	0.08	0.08	0.30	0.30
Accounting Assistant	0.20	0.20	0.20	0.20	0.20	0.20
Dept Info Tech Spec	—	—	—	—	0.04	0.04
Engineering Tech	—	—	—	—	0.20	0.20
Administrative Aide	0.02	0.15	0.15	—	—	0.20
Office Assistant	—	—	—	—	0.30	—
Custodian	—	0.35	0.35	0.10	—	—
Administrative Assistant	0.13	—	—	0.15	—	—
Total	0.67	1.32	1.32	1.07	1.61	1.65

Public Works Construction Fund

Capital Project Fund

Departmental Summary:

The Public Works Construction Fund was established to account for costs of transportation construction projects, which typically extend beyond a single budget year. Costs are tracked over the life of each project for reimbursement and reporting purposes. Revenues sources for the projects include federal, state, or local funds.

State RCWs require the preparation of a plan for transportation improvement programs and projects. The document must be updated annually and filed with the Secretary of the Department of Transportation. In addition, each urban-area city and county must submit a separate program section identifying projects for submittal to the Transportation Improvement Board (TIB) for potential funding under the Urban Arterial Trust Account (UATA) or the Transportation Improvement Account (TIA). The plan also informs other jurisdictions of Pierce County's current planning direction for transportation needs. The six-year Transportation Improvement Plan (TIP) is approved by the Pierce County Council and submitted to the Puget Sound Regional Council for review and inclusion in the regional transportation plan. The list of construction projects shown on the following pages reflects anticipated expenditures for the current year only. Even though most projects extend over multiple years, an annual allocation is required for purposes of balancing the annual budget and to meet other legal requirements. The actual projects under construction may vary from those shown below as long as the project undertaken is authorized in one of the approved transportation planning documents referenced above.

Budget Highlights:

The Public Works Construction Fund budget for 2005 totals \$53,313,000, which is a large increase over the 2004 program. The anticipated projects and related funding sources are shown later in this section. However, all projects listed in the Transportation Improvement Plan are eligible for activity in 2005. Approximately one quarter of the funding for the 2005 projects is from outside sources (usually federal or state grants).

FUNDING SOURCES

	2002 Actual	2003 Actual	2004 Budget	2005 Budget	Absolute Change	Percent Change
Est Use of Begin Fund Balance	\$ —	\$ —	\$ 6,841,000	\$10,751,000	\$ 3,910,000	57.2 %
Intergovernmental Revenue	12,506,501	9,868,480	11,361,100	12,841,000	1,479,900	13.0
Charges for Services	1,353,901	1,143,629	614,020	1,797,000	1,182,980	192.7
Miscellaneous Revenue	10,500	—	—	—	—	—
Other Financing Sources	11,408,000	8,394,595	19,449,880	27,924,000	8,474,120	43.6
Total	\$25,278,902	\$19,406,704	\$38,266,000	\$53,313,000	\$15,047,000	39.3 %

Public Works Construction Fund

EXPENDITURES

	2002	2003	2004	2005	Absolute	Percent
	Actual	Actual	Budget	Budget	Change	Change
Salaries & Wages	\$ 2,715,553	\$ 2,912,943	\$ 3,340,060	\$ 3,508,300	\$ 168,240	5.0 %
Personnel Benefits	580,829	696,551	760,460	841,280	80,820	10.6
Supplies	226,525	111,117	203,060	97,540	(105,520)	(52.0)
Other Services & Charges	3,282,975	4,195,427	5,627,220	5,037,850	(589,370)	(10.5)
Intergovernmental Services	753,972	350,767	1,722,990	1,692,000	(30,990)	(1.8)
Capital Outlays	21,926,796	14,926,349	26,612,210	42,136,030	15,523,820	58.3
Total	\$29,486,650	\$23,193,154	\$38,266,000	\$53,313,000	\$15,047,000	39.3 %

Project Summary

2005 Funding Sources
(All Costs in \$1000's)

PROJECT NAME	PROJECT LIMITS	CRP #	Total Cost	2005 Funding Sources					
				2005 Budget	Carry-over	Road Fund	Real Estate Excise Tax	Other	
Artondale Dr NW Culvert Replacement	At 66 Ave NW	5028	25	25	25	—	—	—	—
Bridge #1204-A / Stewart Rd	Stewart Rd over White / Stuck River	5388	5,760	50	—	50	—	—	—
Bridge #1204-B / Stewart Rd	Stewart Rd under UPRR	5384	14,730	300	—	—	—	—	300
Bridge #12173-B / 304 St E	304 St E over S Fork Muck Ck	5385	647	534	110	—	—	—	424
Bridge #14164-A / Lynch Ck Rd E	Lynch Ck Rd E over Lynch Ck	5653	62	8	—	—	—	—	8
Bridge #19204-B / 66 Ave E	66 Ave E over Clarks Ck	5544	400	5	4	1	—	—	—
Bridge #19204-C / 66 Ave E	66 Ave E over Clarks Ck	5545	400	5	4	1	—	—	—
Bridge #19204-H / 70 Ave E	River Rd E (SR-167) to N Levee Rd E	5369	9,075	15	2	—	—	—	13
Bridge #2210-B / S Vaughn Rd Kpn	S Vaughn Rd KPN over Vaughn Bay	5352	2,098	76	—	—	—	—	76
Bridge #24164-A / Alder Cutoff Rd E	Alder Cutoff Rd E over Mashel River	5386	1,975	1	—	1	—	—	—
Bridge #26205-B / 218 Ave E	218 Ave E over PSP&L Canal	5383	1,056	2	—	2	—	—	—
Bridge #26211-A / F1 Bridge Rd F1-Nav Lights	At Bridge #26211-A	5681	110	2	—	2	—	—	—
Bridge #26211-A / F1 Bridge Rd F1	FI Bridge Rd FI over Hale Passage	5355	637	2	—	2	—	—	—
Bridge #27204-A / Milwaukee Ave E	Milkwaukee Ave E over Puyallup River	5390	212	2	—	2	—	—	—
Bridge #36193-A / 176 St E	176 St E over Tacoma Rail	5387	5,000	10	—	10	—	—	—
Bridge #4181-A / Nisqually Rd Sw	Over BNSFRR Tracks	5372	7,439	2	—	2	—	—	—
Bridge #5175-C / Orville Rd E	Orville Rd E over Kapowsin Ck	5373	1,327	773	163	—	—	—	610
Bridge #5177-A / Fairfax Forest Rsv Rd	Fairfax Forest Res Rd over Tolmie Ck	5360	143	20	—	—	—	—	20
Bridge #6205-A / Lake Tapps Pkwy E	8 St E to N Access Ramp	5357	5,779	2	—	2	—	—	—
Canyon Rd E	116 St E to 106 St E	5153	5,976	2	—	2	—	—	—
Canyon Rd E	131 St Ct E to 116 St E	5433	10,794	840	290	550	—	—	—
Canyon Rd E	160 St E to 131 St Ct E	5404	10,430	800	—	800	—	—	—
Canyon Rd E	1,050' N/O 176 St E to 160 St E	5656	12,400	700	—	250	450	—	—
Canyon Rd E	192 St E to 1000' S of 176 St E	5666	6,200	5	—	5	—	—	—
Canyon Rd E	Brookdale Pond Improvements	5665	2,747	2	—	2	—	—	—
Canyon Rd E	200 St E to 192 St E	5688	2,400	119	—	119	—	—	—
Canyon Rd E / Northerly Exit	Pioneer Way E to 52 St E / 62 Ave E	5643	13,900	899	—	44	570	285	—
Canyon Rd E / Southerly Exit	224 St E to 192 St E	5123	9,000	50	—	50	—	—	—
Canyon Rd E / Southerly Exit	260 St E / SR-7 to 224 St E	5124	7,000	50	—	50	—	—	—
Canyon Rd E / TIB Stage 3	160 St E to 144 St E	5683	8,961	7,140	4,064	1,243	—	—	1,833
Canyon Rd E / 176 St E	Intersection	5657	11,539	9,230	1,056	5,524	2,650	—	—
Canyon Rd E / 176 St E - Project 1	Intersection	5682	2,093	345	345	—	—	—	—
Cross Base Corridor Study	I-5 to 176 St S	5151	4,296	6	—	6	—	—	—

Project Summary

2005 Funding Sources
(All Costs in \$1000's)

PROJECT NAME	PROJECT LIMITS	CRP #	Total Cost	2005				
				Budget	Carry-over	Road Fund	Real Estate Excise Tax	Other
Day Labor	Countywide	5000	1,500	250	—	250	—	—
E Valley Hwy E	S Access Ramp to N Access Ramp	5490	3,124	2	—	2	—	—
Fairfax Forest Rsv Rd - Culvert	At Milepost 1.55	5690	300	300	—	300	—	—
FI Bridge Rd NW /Warren Dr NW /32 St NW	FI Br #26211-A to 70 Ave NW	5667	2,280	260	—	52	—	208
Guardrail Program - 2005	Countywide	5648	70	70	—	70	—	—
Guardrail Program - 2006 - 2010	Countywide	5400	30	5	—	5	—	—
Hunt St NW	46 Ave NW to Lombard Dr NW	5599	3,500	10	—	10	—	—
Jahn Ave NW / 32 St NW / 22 Ave NW	36 St NW to 24 St NW	5540	670	1	—	1	—	—
June Ck Culvert	Fairfax Forest Reserve Rd at June Ck	5639	335	2	—	2	—	—
Lake Tapps Pkwy E	Sumner-Tapps Ext to 182 Ave E	5486	4,757	1,825	—	1,334	—	491
Lake Tapps Pkwy E - Wetland Mitigation Site	Sumner-Tapps E to 182 Ave E	5680	282	2	—	2	—	—
Military Rd E / 122 Ave E / 136 St E	Intersection	5145	1,305	1	—	1	—	—
Military Rd E / Reservoir Rd E	Intersection	5514	770	16	—	—	—	16
Military Rd E / Shaw Rd E	Intersection	5285	861	2	—	2	—	—
Miscellaneous Engineering	Various Locations	5100	600	100	—	100	—	—
Nisqually Rd SW	Bridge #4181-A to Bridge #8181-A	5463	80	2	—	2	—	—
Nisqually Rd SW	I-5 to Bridge #4181-A	5443	1,540	2	—	2	—	—
Nisqually Wetland Bank	N of SR-7 at Ohop Creek Xing	5381	114	1	—	1	—	—
Outside Grants Leveraging Program	Various Locations	5999	600	100	—	100	—	—
Pioneer Way E / Waller Rd E	Intersection	5628	540	1	—	1	—	—
Point Fosdick Dr NW / 36 St NW	Intersection	5677	330	280	250	30	—	—
Pt Fosdick / Stone Dr NW / 34 Ave NW	Intersection	5581	630	1	—	1	—	—
Rhodes Lake Rd Corridor Study	198 Ave E to SR-162	5543	1,291	300	180	120	—	—
Rhodes Lake Rd E / 192 Ave E	Intersection	5691	250	112	—	112	—	—
S Plateau Connection Study	SR - 162 to 186 Ave E	5678	170	85	85	—	—	—
S Prairie Rd E	121 St Ct E to 120 St E	5629	1,732	238	—	90	—	148
S Prairie Rd E	SR - 410 to Bonney Lake City Limits	5548	2,181	1,530	—	—	—	1,530
S Prairie Rd E	Bonney Lake City Limits to 202 Ave E	5642	363	285	—	285	—	—
Spanaway Loop Rd S	S of Garfield St S to N of Wheeler St S	5664	684	271	—	117	—	154
Spanaway Loop Rd S Ext	Vicinity of 10 Ave S to 176 St S / SR-7	5453	2,701	2	—	—	2	—
Spot Safety Program	Various Locations	5247	600	100	—	100	—	—
SR-161	176 St E to 128 St E	5640	1,560	700	464	236	—	—
SR-167	W of and E of new Bridge #19204-H	5644	3,525	10	1	—	—	9

Public Works Construction Fund

Project Summary

2005 Funding Sources
(All Costs in \$1000's)

PROJECT NAME	PROJECT LIMITS	CRP #	Total Cost	2005				
				Budget	Carry-over	Road Fund	Real Estate Excise Tax	Other
SR - 167 / Stewart Rd	W Valley Hwy E to SR - 167 NB On-Ramp	5467	214	205	—	205	—	—
SR-302 / Goodnough Dr NW	Intersection	5692	100	100	—	100	—	—
SR-7	SR-512 to SR-507	5668	500	50	—	50	—	—
SR-704 (Cross Base Hwy)	I-5 to 176 St S	5469	180,000	2,000	—	—	2,000	—
State Contract Participation	Various Locations	5199	600	100	—	100	—	—
Stewart Rd E	SR - 167 NB On-Ramp to Bridge #1204-B	5466	6,771	2,230	—	473	—	1,757
Stewart Rd E	Bridge #1204-A to Lake Tapps Pkwy E	5660	8,002	3,841	350	741	—	2,750
Sumner-Tapps Hwy E / 16 St E	Intersection	5658	238	2	—	2	—	—
Sunrise Blvd E	110 Ave E to 122 Ave E	5693	150	50	—	50	—	—
Traffic Calming Pilot Program	Parkland, Spanaway, and Unincorp. Steilacoom	5300	300	300	—	300	—	—
Valley Ave E / 70 Ave E	Freeman Rd E to 20 St E	5148	1,638	541	475	66	—	—
Wetland Banking Program	Various Locations	5330	450	75	—	75	—	—
Wollochet Dr NW	Fillmore Dr NW to 40 St NW	5542	8,000	500	—	—	500	—
Woodland Ave E / 112 St E	Intersection	5526	251	2	—	2	—	—
Woodland Ave E / 128 St E	Intersection	5634	582	5	5	—	—	—
9 St E / 12 St E	182 Ave E to 198 Ave E	5430	2,299	30	30	—	—	—
9 St E / 182 Ave E	Intersection	5228	898	305	305	—	—	—
22 Ave E	192 St E to 176 St E	5695	2,512	1	—	1	—	—
22 Ave E	208 St E to 192 St E	5586	3,250	1	—	1	—	—
22 Ave E	Military Rd E to 152 St E	5689	2,130	15	—	—	—	15
22 Ave E / 152 St E	Intersection	5650	750	1	—	1	—	—
22 Ave E / 192 St E	Intersection	5670	600	1	—	1	—	—
36 St NW	Gig Harbor City Limits to 22 Ave NW	5531	2,000	1	—	1	—	—
38 Ave E / 176 St E	Intersection	5508	780	2	—	2	—	—
40 St NW	70 Ave NW to Wollochet Dr NW	5547	499	2	—	2	—	—
40 St NW - Non Eligible	77 Ave Ct NW to Wollochet Dr NW	5550	388	2	—	2	—	—
52 St E / 70 Ave E	52 St E / 62 Ave E to River Rd E (SR-167)	5498	9,945	840	—	150	—	690
70 Ave E	N Levee Rd E to 500' S of 45 St Ct E	5645	9,175	3	1	—	—	2
72 St E	McKinley Ave to Portland Ave E	5284	168	2	2	—	—	—
78 Ave E	176 St E to 160 St E	5651	339	33	33	—	—	—
78 Ave E	192 St E to 176 St E	5684	5,000	1	—	1	—	—
78 Ave E / 184 St E	Intersection	5661	500	1	—	1	—	—
78 Ave E / 192 St E	Intersection	5641	1,094	1	—	1	—	—

Project Summary

2005 Funding Sources
(All Costs in \$1000's)

PROJECT NAME	PROJECT LIMITS	CRP #	Total Cost	2005				
				Budget	Carry-over	Road Fund	Real Estate Excise Tax	Other
82 Ave E / 224 St E	Intersection	5578	409	184	—	30	—	154
86 Ave E	176 St E to 152 St E	5549	1,101	10	10	—	—	—
86 Ave E / 128 St E	Intersection	5491	1,363	250	—	250	—	—
94 Ave E	136 St E to 116 St E	5532	9,100	1,685	—	—	1,685	—
111 Ave E / 128 St E	Intersection	5685	350	86	—	—	—	86
112 St E	58 Ave E to 300' E of Woodland Ave E	5494	6,504	3,735	1,578	—	—	2,157
112 St E	Waller Rd E to 50 Ave E	5445	6,418	40	—	40	—	—
112 St E	500' E of "A" St S to 18 Ave E	5686	5,870	53	—	—	—	53
112 St E	198 Ave E / 199 Ave Ct E to 300' W of 203 Ave E	5590	730	75	—	75	—	—
112 St E	300' E/O Woodland Ave E to 86 Ave E	5534	6,600	100	—	100	—	—
112 St E	Waller Rd E to 50 Ave E - Non Eligible TIB	5635	266	40	—	40	—	—
112 St S	Alaska St S to Sheridan Ave S	5520	555	207	118	—	—	89
112 St S - Asphalt Overlay	Alaska St S to Sheridan Ave S	5679	210	195	57	—	—	138
176 St E	1,000' E of Canyon Rd E to 300' W of 78 Ave E	5472	10,000	920	—	220	700	—
176 St E	600' E of 78 Ave E to Gem Heights Dr E	5424	6,500	825	—	200	625	—
176 St E	Gem Heights Dr E to SR-161	5496	4,469	310	2	8	300	—
176 St E	"B" St E to 14 Ave E	5471	5,200	375	—	125	250	—
176 St E	14 Ave E to 32 Ave E	5536	6,500	650	—	146	500	4
176 St E	32 Ave E to 500' W of 51 Ave E	5537	10,000	725	—	222	500	3
176 St E Ext	130 Ave E to Urban Growth Area (UGA) Bndry	5444	9,000	1	—	1	—	—
176 St E Ext	UGA Boundry to BR 31195-A Calistoga Ave E	5694	9,000	1	—	1	—	—
184 St E	78 Ave E to Gem Heights Dr E	5596	692	80	80	—	—	—
192 St E	38 Ave E to Canyon Rd E	5487	1,200	50	—	50	—	—
198 Ave E	144 St E to 120 St E	5675	8,000	130	—	100	—	30
198 Ave E	120 St E to Rhodes Lake Rd E	5674	1,410	115	—	100	—	15
198 Ave E / 199 Ave Ct E	Rhodes Lake Rd to 104 St E	5676	8,700	150	—	100	—	50
214 Ave E	120 St E to Bonney Lake City Limits	5659	920	1	—	1	—	—
214 Ave E / 218 Ave E Relocation	40 St E to 34 St E	5263	2,017	662	662	—	—	—
304 St E	SR-7 to SR-161	5673	512	2	—	2	—	—
3R Program - 2005	Various Roads Countywide	5669	1,500	1,500	—	980	—	520
3R Program - 2006	Various Roads Countywide	5687	1,525	25	—	25	—	—
Totals			\$ 580,630	\$ 53,313	\$ 10,751	\$ 17,192	\$ 10,732	\$ 14,638

Second REET Fund - Roads

Special Revenue Fund

Departmental Summary:

The Second R.E.E.T. which can only be allocated for infrastructure projects (e.g. roads, sewers, parks, water systems,) was approved in late 2001, to be effective in 2002. The Council approved a general allocation of 75% for Transportation projects and 25% for Parks and Recreation projects.

Budget Highlights:

The 2005 Budget reflects the direct expense or transfer of funds for those projects and activities listed below. Funding is provided from prior fund balances plus estimated 2005 revenues.

FUNDING SOURCES

	2002 Actual	2003 Actual	2004 Budget	2005 Budget	Absolute Change	Percent Change
Est Use of Begin Fund Balance	\$ —	\$ —	\$ 7,444,060	\$ 6,986,680	\$ (457,380)	(6.1) %
Taxes	3,387,040	4,478,776	3,600,000	3,750,000	150,000	4.2
Total	\$ 3,387,040	\$ 4,478,776	\$ 11,044,060	\$ 10,736,680	\$ (307,380)	(2.8) %

PROJECT SUMMARY

Project Name	CRP #	2005 Budget
Public Works (75%)		
Canyon Road East	5656	\$ 450,000
Canyon Road East - Northerly Ext	5643	570,000
Canyon Road East / 176th Street East	5657	2,650,000
Spanaway Loop Road South Ext	5453	2,000
SR-704 Cross Base Hwy	5469	2,000,000
Wollochet Dr NW	5542	500,000
94 Avenue East	5532	1,685,000
176 St E / "B" St E to 14 Ave E	5471	250,000
176 St E / E/O Canyon Rd E to W/O 78 Ave E	5472	700,000
176 St E / 14 Ave E to 32 Ave E	5536	500,000
176 St E / 32 Ave E to W/O 51 Ave E	5537	500,000
176 St E / E/O 78 Ave E to Gem Heights Dr E	5424	625,000
176 St E / Gem Heights Dr E to SR-161	5496	300,000
Total Public Works Construction Projects		10,732,000
Roads Administration Expenses		4,680
Total Public Works (75%)		\$ 10,736,680

Second REET Fund - Roads

Transportation Facilities

Capital Project Fund

Departmental Summary:

The Transportation Facilities Fund was established to account for costs of new capital facility projects, such as Road Maintenance shops or other support facilities, separate from all other road related transportation projects. This fund includes the costs of new facilities, land acquisition, design, and construction as well as major repairs/enhancements to such existing facilities.

Budget Highlights:

The recommended 2005 Budget for this fund is composed of the following items:

- a) Combined Roads Maintenance Facility construction\$18,800,000
 - b) Transportation Services Building (land acquisitions and design) 5,200,000
 - c) Rhodes Lake Maintenance Facility construction 2,600,000
- \$26,600,000

We will need to sell long term bonds (or at least arrange for interim financing) in 2005 to finance these improvements.

FUNDING SOURCES

	2002 Actual	2003 Actual	2004 Budget	2005 Budget	Absolute Change	Percent Change
Other Financing Sources	\$ —	\$ —	\$ 5,304,000	\$ 26,600,000	\$ 21,296,000	401.5 %
Total	\$ —	\$ —	\$ 5,304,000	\$ 26,600,000	\$ 21,296,000	401.5 %

PROGRAM EXPENDITURES

	2004 FTE	2005 FTE	2004 Budget	2005 Budget	Absolute Change	Percent Change
Rhodes Lake Mtn Fac	—	—	\$ 165,000	\$ 2,600,000	\$ 2,435,000	1,475.8 %
Combined Maintenance Fac	—	—	3,600,000	18,800,000	15,200,000	422.2
Transportation Services Bldg	—	—	1,539,000	5,200,000	3,661,000	237.9
Total	—	—	\$ 5,304,000	\$ 26,600,000	\$ 21,296,000	401.5 %

Transportation Facilities
