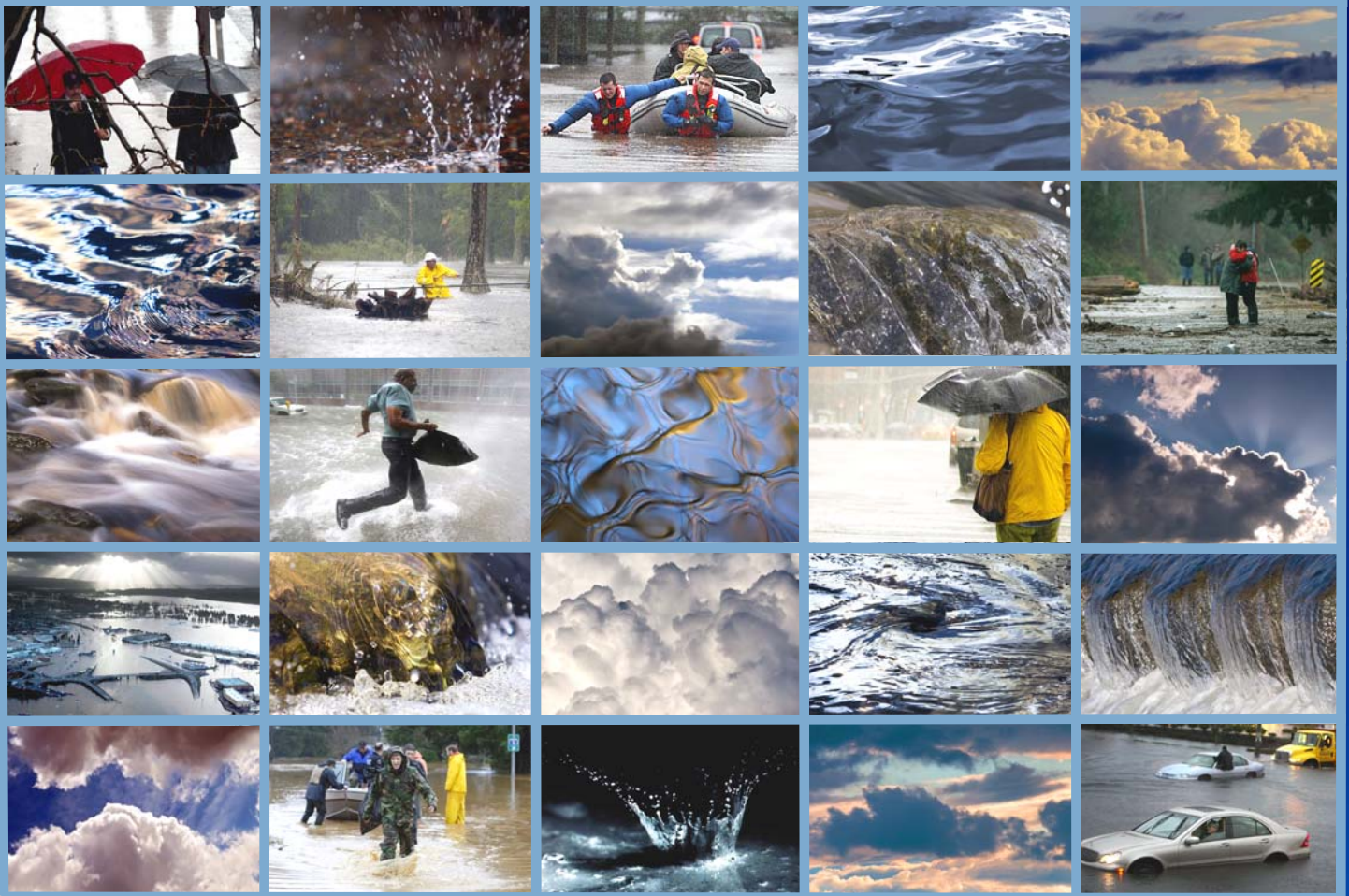




# Pierce County 2008 Stormwater Management and Site Development Manual

ORDINANCE 2008-59S  
EFFECTIVE DATE MARCH 1, 2009



Pierce County Public Works & Utilities  
Surface Water Management  
2702 42nd Street, Suite 201  
Tacoma, Washington 98409  
(253) 798-2725  
[www.piercecounty.org/swm](http://www.piercecounty.org/swm)



# Pierce County 2008 Stormwater Management and Site Development Manual

ORDINANCE 2008-59S  
EFFECTIVE DATE MARCH 1, 2009



Pierce County Public Works & Utilities  
Surface Water Management  
2702 42nd Street, Suite 201  
Tacoma, Washington 98409  
(253) 798-2725  
[www.piercecounty.org/swm](http://www.piercecounty.org/swm)