

REGION NO.	STATE	FEDERAL AID PROJECT NO.	SHEET NO.	TOTAL SHEETS
10	WASH.	-----	1	4

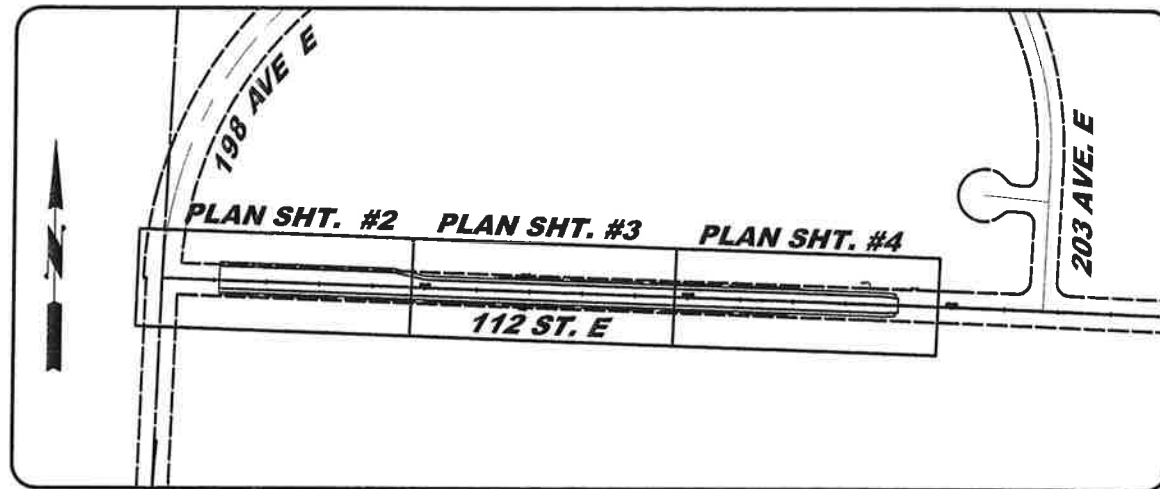
CALL 2 WORKING DAYS BEFORE YOU DIG
1-800-424-5555
 UTILITIES UNDERGROUND LOCATION CENTER

112 STREET EAST

FROM 198 AVENUE EAST TO
 203 AVENUE EAST

CRP 5590

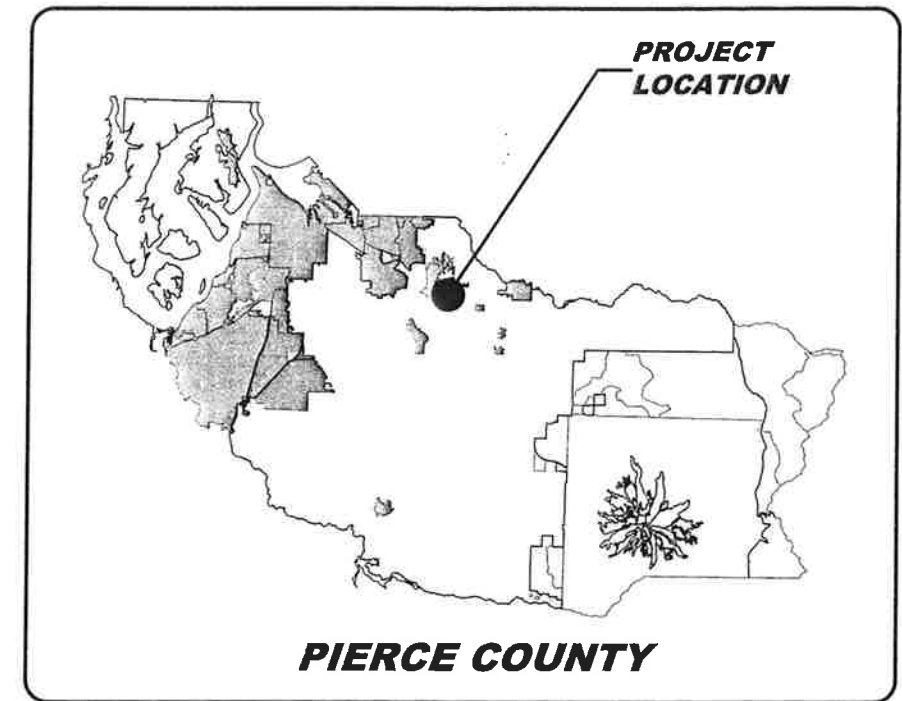
RIGHT-OF-WAY PLANS



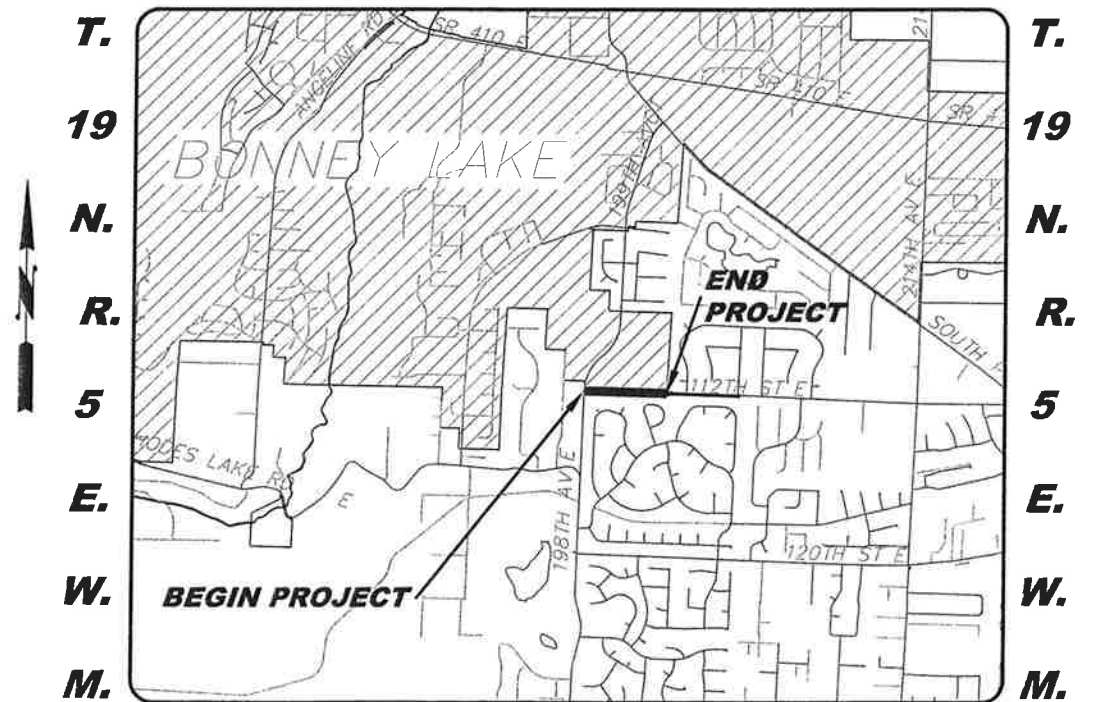
KEY MAP
(NOT TO SCALE)

INDEX

COVER SHEET	1
PLAN AND PROFILE	2-4



PIERCE COUNTY
LOCATION MAP



VICINITY MAP
(NOT TO SCALE)

WHPacific

724 Columbia St NW, Suite 140
 Olympia, WA 98501
 360-754-3375 Fax 360-754-1185
 www.whpacific.com

DESIGNED BY: M. JOHNSON	SURVEYED BY: S. WRIGHT
DRAWN BY: M. JOHNSON	DATE SURVEYED: 2-2006
CHECKED BY: S. DAVIS	DATE PLOTTED: Jun. 2008



NO.	DATE	REVISION	BY	APPROVED



Pierce County
 Department of Public Works and Utilities
 Transportation Services
 2702 South 42nd Street, Suite 201
 Tacoma, Washington 98409-7322

CHECKED BY:
R. SCHLONGA, P.E.

REVIEWED BY:
P. BAUGHMAN, P.E.

Office of County Engineer

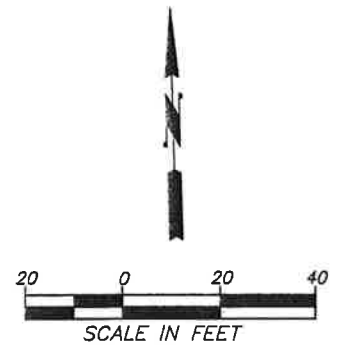
APPROVED BY:

Ramiro A. Chavez 6/20/08
 BRIAN D. STACY, P.E.
 COUNTY ENGINEER FOR: DATE

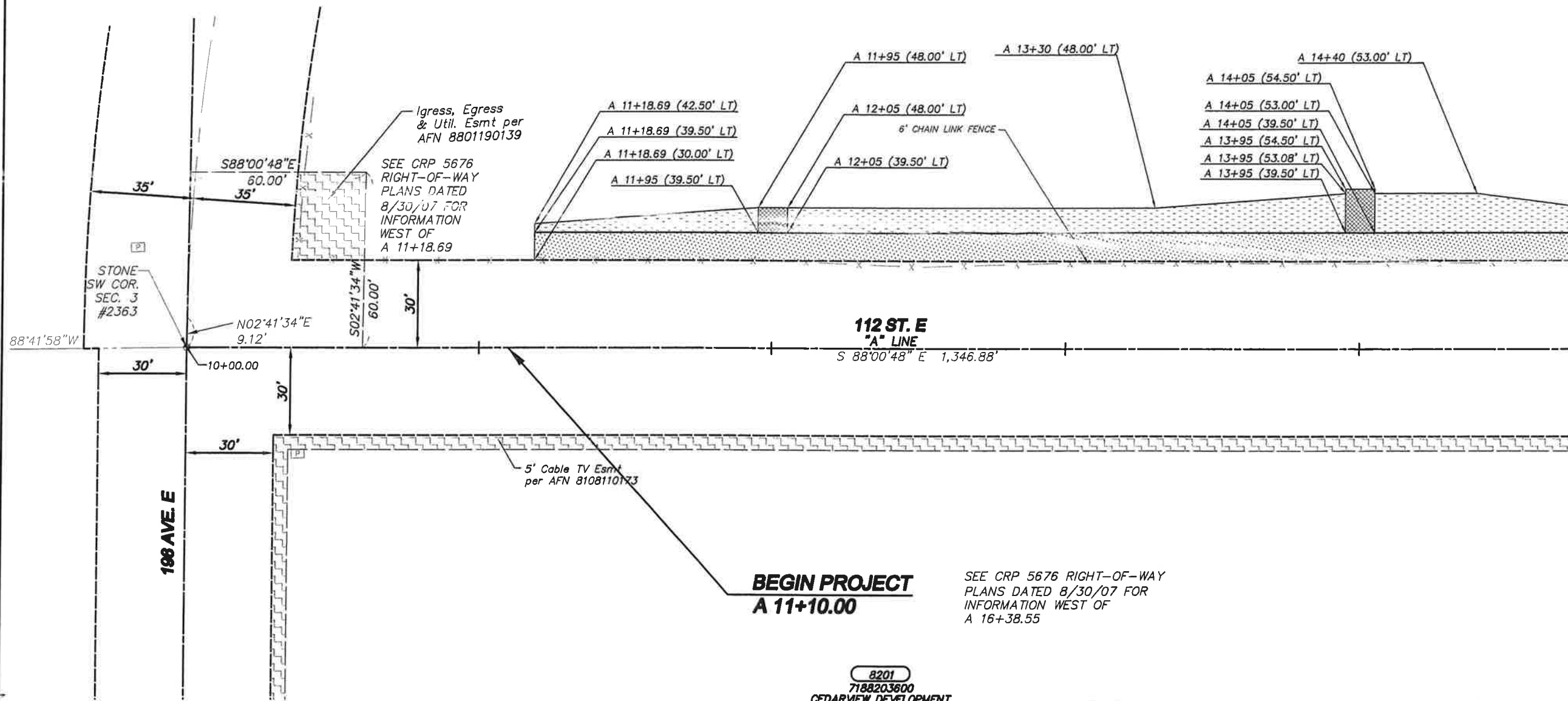
RAMIRO A. CHAVEZ, P.E.
 PROJECT ENGINEERING MANAGER

112 STREET EAST
198 AVE. EAST TO 203 AVE. EAST
COVER SHEET
CRP 5590

CALL 2 WORKING DAYS BEFORE YOU DIG
1-800-424-5555
 UTILITIES UNDERGROUND LOCATION CENTER



8200
 0519033005
 SUMNER SCHOOL DISTRICT
 NO. 320
 10921 119 AVE CT E



- LEGEND (EXISTING)**
- ⊙ MONUMENT (AS NOTED)
 - ⊠ POWER VAULT
 - TELEPHONE RISER
 - CATCH BASIN
 - SS STORM DRAIN PIPE
 - BT BURIED TELEPHONE
 - BP BURIED POWER
 - x-x CHAIN LINK FENCE
 - TOE OF SLOPE
 - TOP OF BANK
 - EDGE OF PAVEMENT
 - ASPHALT BARRIER CURB
 - RIGHT-OF-WAY
 - EASEMENT
 - PROPERTY LINE
- LEGEND (PROPOSED)**
- DRAINAGE EASEMENT
 - SLOPE EASEMENT
 - RIGHT-OF-WAY
 - SLOPE/WALL EASEMENT

- [Pattern] RIGHT-OF-WAY
- [Pattern] SLOPE EASEMENT
- [Pattern] DRAINAGE EASEMENT
- [Pattern] SLOPE/WALL EASEMENT
- [Pattern] TEMPORARY EASEMENT
- [Pattern] EXISTING EASEMENT

BEGIN PROJECT
A 11+10.00
 SEE CRP 5676 RIGHT-OF-WAY
 PLANS DATED 8/30/07 FOR
 INFORMATION WEST OF
 A 16+38.55

8201
 7188203800
 CEDARVIEW DEVELOPMENT
 COMPANY
 NO SITE ADDRESS AVAILABLE

OWNERSHIP

PARCEL NO.	NAME	TOTAL AREA	R/W	LT~REMAINDER~RT	SLOPE ESMT.	DRAINAGE ESMT.	WALL ESMT.	TEMPORARY ESMT.
8200	SUMNER SCHOOL DIST. NO. 320	1,609,106	3,508	1,605,598	5,004	235	5,866	8,042
8201	SEE SHEET 3							

NOTE:

PROPERTY LINES OF THE ADJACENT PARCELS SHOWN ON THESE PLANS ARE LOCATED BY INTERPRETATION OF DEEDS AND OTHER INFORMATION FOUND IN THE PUBLIC RECORD AND SHOULD NOT BE CONSTRUED AS AN ACTUAL SURVEY.



DESIGNED BY:
M. JOHNSON

SURVEYED BY:
S. WRIGHT

DRAWN BY:
M. JOHNSON

CHECKED BY:
S. DAVIS

DATE SURVEYED:
2-2006

DATE PLOTTED:
Jun. 2008



NO.	DATE	REVISION	BY	APPROVED



Pierce County
 Department of Public Works and Utilities
 Transportation Services
 2702 South 42nd Street, Suite 201
 Tacoma, Washington 98409-7322

CHECKED BY:
R. SCHLONGA, P.E.

REVIEWED BY:
P. BAUGHMAN, P.E.

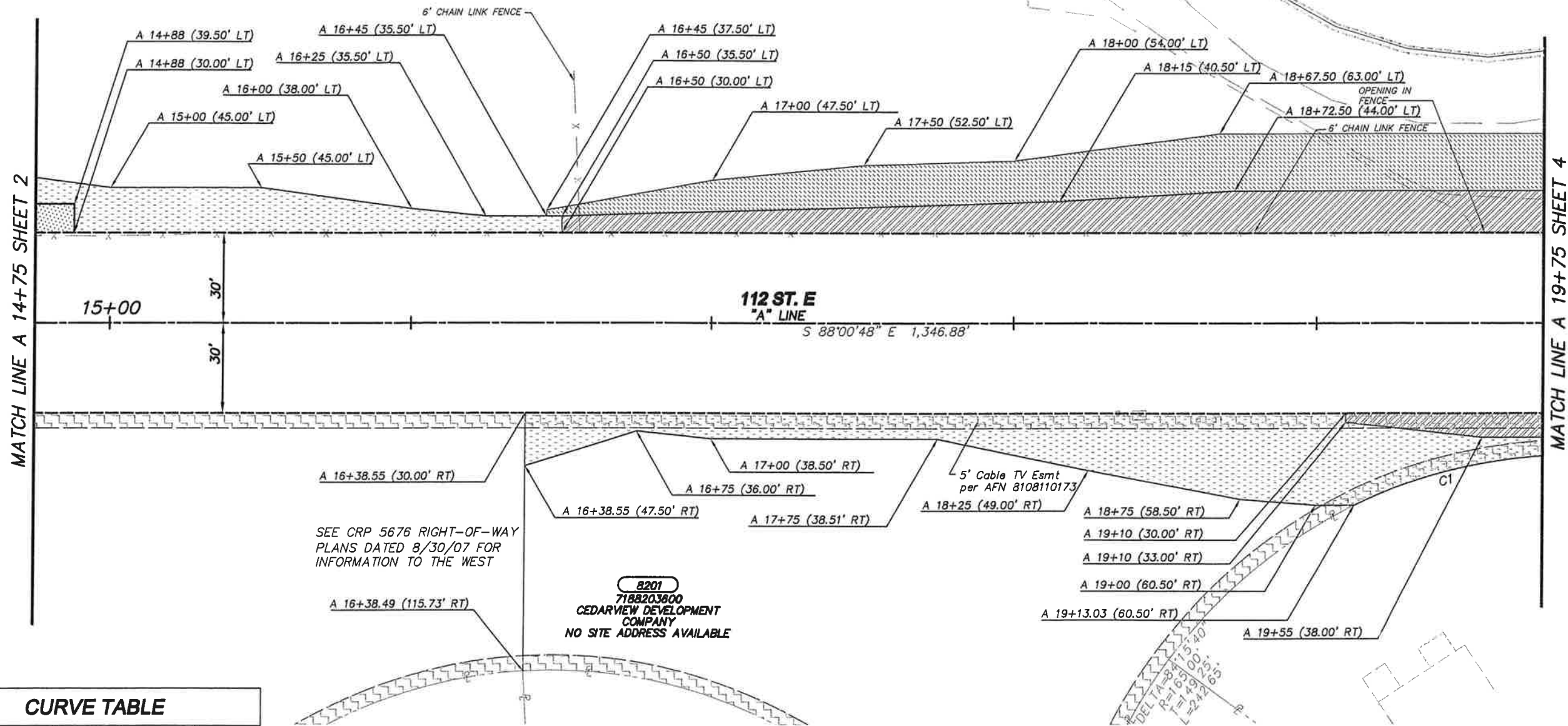
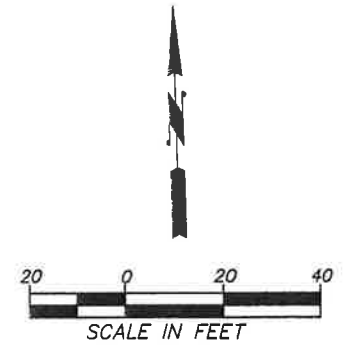
Office of County Engineer
 APPROVED BY:

 BRIAN D. STACY, P.E.
 COUNTY ENGINEER
 DATE: 6/19/08
 RAMIRO A. CHAVEZ, P.E.
 PROJECT ENGINEERING MANAGER

112 STREET EAST
198 AVE. EAST TO 203 AVE. EAST
RIGHT-OF-WAY PLAN
CRP 5590

CALL 2 WORKING DAYS BEFORE YOU DIG
1-800-424-5555
 UTILITIES UNDERGROUND LOCATION CENTER

8200
 0519033005
 SUMNER SCHOOL DISTRICT
 NO. 320
 10921 119 AVE CT E



SEE CRP 5676 RIGHT-OF-WAY
 PLANS DATED 8/30/07 FOR
 INFORMATION TO THE WEST

8201
 7188203600
 CEDARVIEW DEVELOPMENT
 COMPANY
 NO SITE ADDRESS AVAILABLE

CURVE TABLE

NUMBER	DELTA	RADIUS	TANGENT LENGTH	ARC LENGTH
C1	22°20'47"	165.00'	32.59'	64.35'

SEC. 10, T. 19 N., R. 5 E., W.M.

OWNERSHIP

PARCEL NO.	NAME	TOTAL AREA	R/W	LT~REMAINDER~RT	SLOPE ESMT.	DRAINAGE ESMT.	WALL ESMT.	TEMPORARY ESMT.
8200	SEE SHEET 2							
8201	CEDARVIEW DEV. COMPANY	1,040,164	0	1,040,164	9,939	0	1,538	0

NOTE:

PROPERTY LINES OF THE ADJACENT PARCELS SHOWN ON THESE PLANS ARE LOCATED BY INTERPRETATION OF DEEDS AND OTHER INFORMATION FOUND IN THE PUBLIC RECORD AND SHOULD NOT BE CONSTRUED AS AN ACTUAL SURVEY.

WHPacific
 724 Columbia St NW, Suite 140
 Olympia, WA 98501
 360-754-0315 Fax 360-754-1195
 www.whpacific.com

DESIGNED BY: M. JOHNSON	SURVEYED BY: S. WRIGHT
DRAWN BY: M. JOHNSON	DATE SURVEYED: 2-2006
CHECKED BY: S. DAVIS	DATE PLOTTED: Jun. 2008



NO.	DATE	REVISION	BY	APPROVED

Pierce County
 Department of Public Works and Utilities
 Transportation Services
 2702 South 42nd Street, Suite 201
 Tacoma, Washington 98409-7322

CHECKED BY: R. SCHLONGA, P.E.	Office of County Engineer
REVIEWED BY: P. BAUGHMAN, P.E.	APPROVED BY: <i>Brian D. Stacy</i> BRIAN D. STACY, P.E. COUNTY ENGINEER FOR: DATE
RAMIRO A. CHAVEZ, P.E. PROJECT ENGINEERING MANAGER	

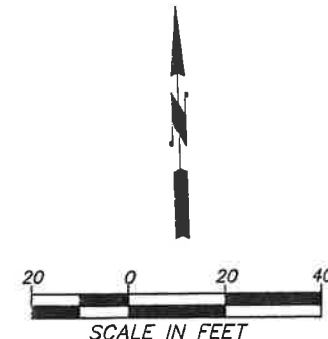
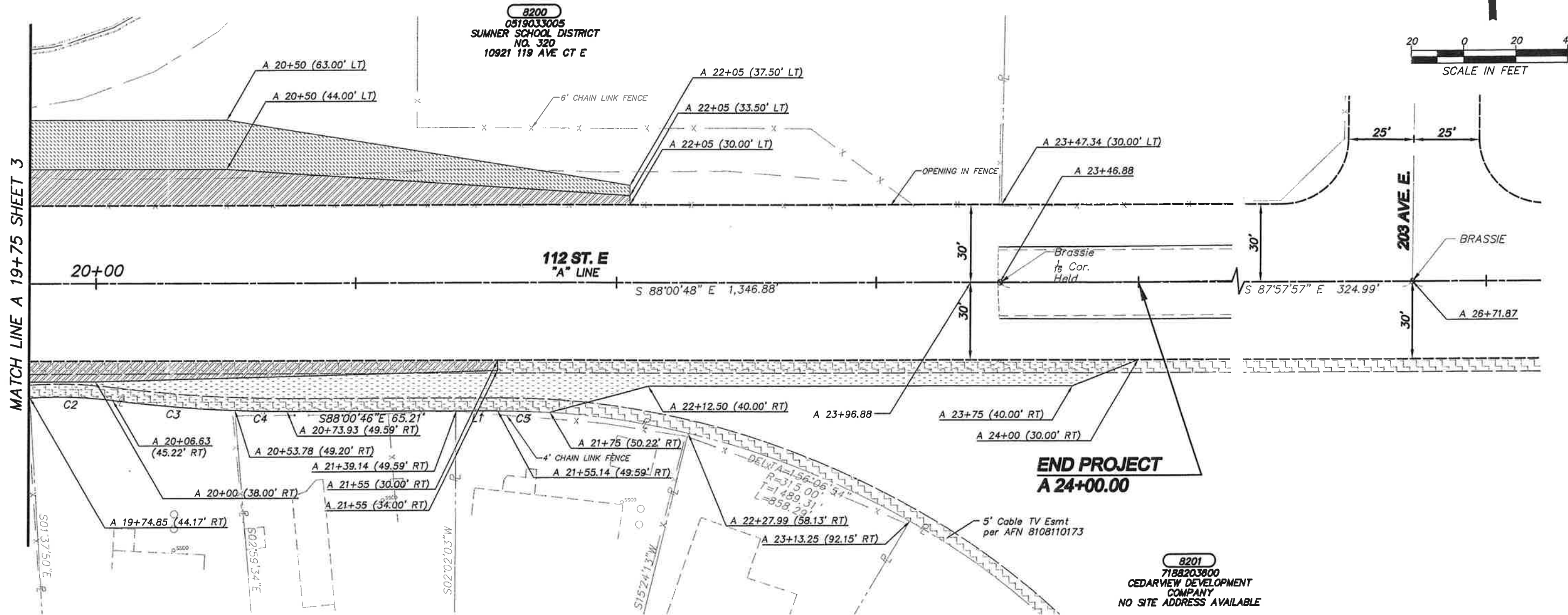
112 STREET EAST
198 AVE. EAST TO 203 AVE. EAST
RIGHT-OF-WAY PLAN
CRP 5590

Drawing: P:\PIERCE COUNTY PUBLIC WORKS & UTILITIES\044663\DESIGN\DRAWINGS\CIVIL\RW PLANS\5590-RW01.DWG Layout Tab: RW02
 Title: 5590_RW01.DWG / 5590_TOP.DWG / 5590_RW.DWG / 5590_DBASE.DWG
 Date: 06/17/2008 Time: 02:08:43 PM Plotted by: SANDERSON

CALL 2 WORKING DAYS BEFORE YOU DIG
1-800-424-5555
 UTILITIES UNDERGROUND LOCATION CENTER

NUMBER	DELTA	RADIUS	TANGENT LENGTH	ARC LENGTH
C2	22°20'47"	165.00'	32.59'	64.35'
C3	11°03'23"	165.00'	15.97'	31.84'
C4	05°12'41"	520.49'	23.69'	47.34'
C5	02°13'05"	520.49'	10.08'	20.15'

NUMBER	BEARING	LENGTH
L1	S88°00'46"	16.00'



OWNERSHIP

PARCEL NO.	NAME	TOTAL AREA	R/W	LT~REMAINDER~RT	SLOPE ESMT.	DRAINAGE ESMT.	WALL ESMT.	TEMPORARY ESMT.
8200	SEE SHEET 2							
8201	SEE SHEET 3							

NOTE:
 PROPERTY LINES OF THE ADJACENT PARCELS SHOWN ON THESE PLANS
 ARE LOCATED BY INTERPRETATION OF DEEDS AND OTHER INFORMATION
 FOUND IN THE PUBLIC RECORD AND SHOULD NOT BE CONSTRUED AS
 AN ACTUAL SURVEY.

Drawing: P:\PIERCE COUNTY PUBLIC WORKS & UTILITIES\034663\DESIGN\DRAWINGS\CIVIL\RW PLANS\5590-RW01.DWG Layout Tab, RW03
 Title: 5590_RW01.DWG / 5590_RW.DWG / 5590_DRB.DWG / 5590_DRB.DWG
 Date: 06/17/2008 Time: 02:07:25 PM Plotted by: SANDERSON

WHPacific
 724 Columbia St NW, Suite 140
 Olympia, WA 98501
 360.754.0315 Fax: 360.754.1193
 www.whppacific.com

DESIGNED BY: M. JOHNSON
 SURVEYED BY: S. WRIGHT
 DRAWN BY: M. JOHNSON
 DATE SURVEYED: 2-2006
 CHECKED BY: S. DAVIS
 DATE PLOTTED: Jun. 2008



NO.	DATE	REVISION	BY	APPROVED

Pierce County
 Department of Public Works and Utilities
 Transportation Services
 2702 South 42nd Street, Suite 201
 Tacoma, Washington 98409-7322

CHECKED BY: R. SCHLONGA, P.E.
 REVIEWED BY: P. BAUGHMAN, P.E.

Office of County Engineer
 APPROVED BY:
 Brian D. Stacy, P.E.
 COUNTY ENGINEER
 DATE: 6/17/08
 RAMIRO A. CHAVEZ, P.E.
 PROJECT ENGINEERING MANAGER

112 STREET EAST
198 AVE. EAST TO 203 AVE. EAST
RIGHT-OF-WAY PLAN
CRP 5590