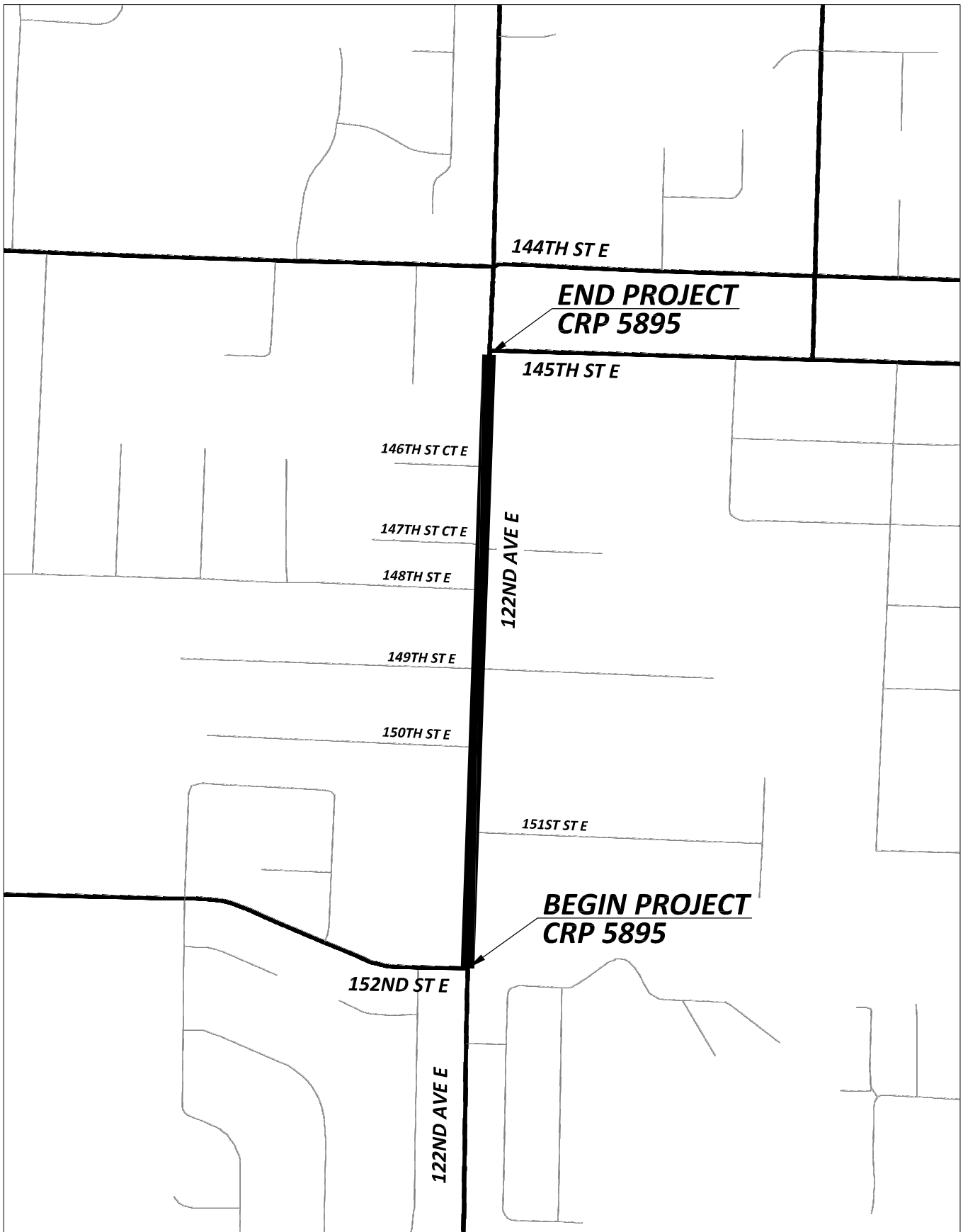


Drawing: P:\5895-122AVE\DESIGN\PUBLICOUTREACH\5895VICINITYMAP.DWG Layout Tab: 8.5X11PORTRAIT
Xrefs:
Date: 05/28/2019 Time: 04:08:55 PM Plotted by: RVULF



T
19
N
R
04
E
W
M



Pierce County
Planning & Public Works
Office of the County Engineer
Tacoma Mall Office Building
4301 South Pine Street, Suite 628
Tacoma, Washington 98409
An APWA Accredited Agency

122ND AVENUE EAST
152ND STREET EAST - 145TH STREET EAST
VICINITY MAP
CRP 5895