

12TH AVENUE SOUTH / 124TH STREET SOUTH

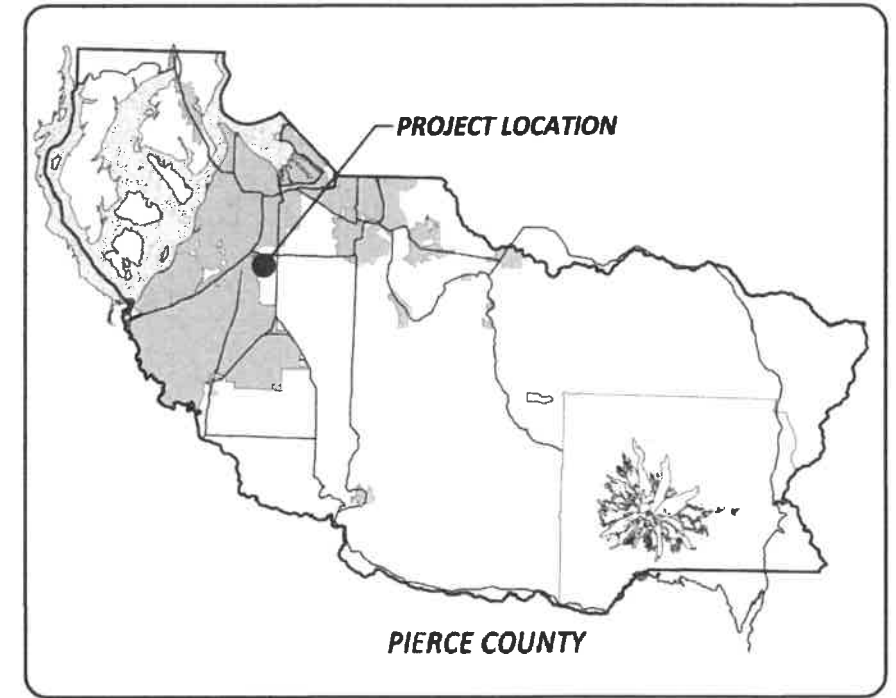
123RD STREET SOUTH TO 10TH AVENUE SOUTH

CRP 5877

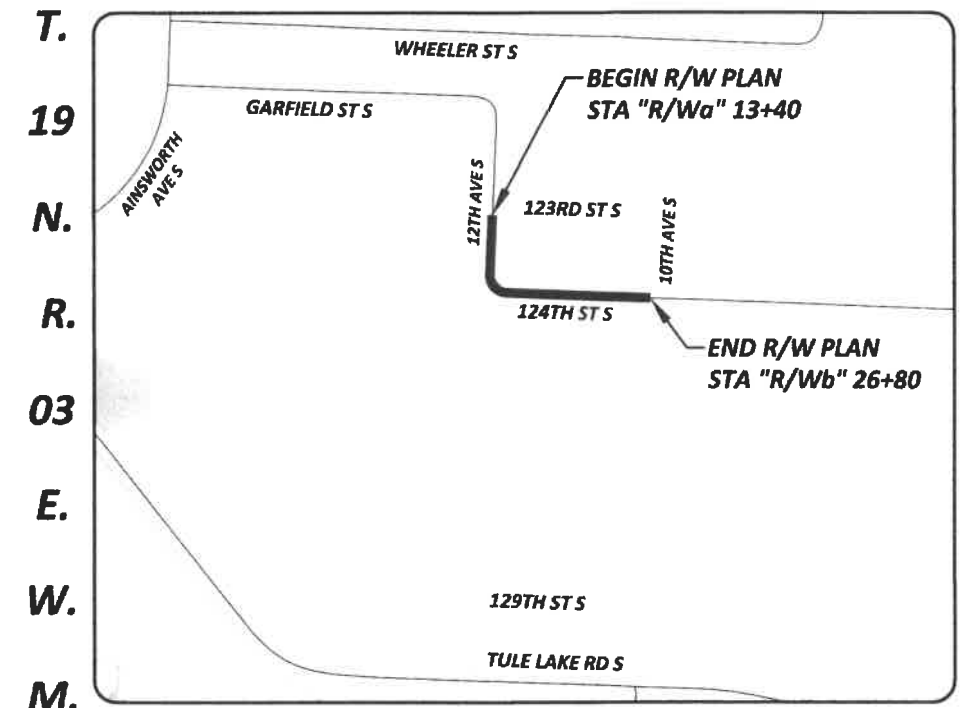
RIGHT-OF-WAY PLAN

1	COVER SHEET
2-3	RIGHT-OF-WAY PLAN

INDEX



LOCATION MAP
N.T.S.



VICINITY MAP
N.T.S.


Drawing: P:\5877-12_AV_S-124_ST_S\DESIGN\DRAWINGS\RIGHT_OF_WAY\PLAN_SHEETS\1 COVER RW.DWG Layout Tab: COVER SHEET
 Xref: 5877\VICINITYMAP.DWG
 Date: 08/02/2019 Time: 11:54:33 AM Plotted by: FMARTIN

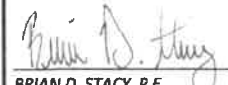



Know what's below.
Call before you dig.

DRAWN BY: R. ENGELHART	BOOK NO.: LOOSE LEAF
DESIGNED BY: F. MARTIN, P.L.S.	SURVEYED BY: G. DUSSAULT
CHECKED BY: L. ROSS P.E.	DATE SURVEYED: APRIL 2018
REVIEWED BY: G. HESS, P.E.	DATE PLOTTED: August 2, 2019

NO.	DATE	REVISION	BY	APPROVED


Pierce County
 Planning & Public Works
 Office of the County Engineer
 Tacoma Mall Office Building
 4301 South Pine Street, Suite 628
 Tacoma, Washington 98409
 An APWA Accredited Agency

Office of the County Engineer
 APPROVED BY:
 8-5-19
 BRIAN D. STACY, P.E. DATE

 LETICIA M. NEAL P.E.
 TRANSPORTATION IMPROVEMENT SECTION MANAGER

12TH AVENUE SOUTH / 124TH STREET SOUTH
123RD STREET SOUTH TO 10TH AVENUE SOUTH

COVER SHEET

CRP 5877

SHEET
 1
 OF
 3

LEGEND (EXISTING)

- GAS VALVE
- GAS METER
- PAD MOUNTED TRANSFORMER
- POWER VAULT
- UTILITY POLE
- UTILITY POLE ANCHOR
- UTILITY RISER
- CATV JUNCTION BOX
- CATV CONDUIT
- SANITARY SEWER MANHOLE
- CATCH BASIN
- WATER METER
- WATER VALVE
- FIRE HYDRANT
- TREE (CONIFER)
- TREE (DECIDUOUS)
- STUMP
- BUSH
- ROCK
- SIGN
- TRAFFIC SIGN
- YARD LIGHT
- GUARD POST
- FOUND MONUMENT, AS NOTED

LEGEND (PROPOSED)

- RIGHT-OF-WAY LINE
- RIGHT-OF-WAY ACQUISITION
- CONSTRUCTION PERMIT
- TEMPORARY EASEMENT
- DRIVEWAY RECONSTRUCTION PERMIT

OWNERSHIP					
PARCEL NO.	NAME	TOTAL AREA	R/W ACQUISITION	REMAINDER	TEMP EASEMENT
9512	PACIFIC LUTHERAN UNIVERSITY	7,500 SF	200 SF	7,300 SF	
9513	FRANKLIN PIERCE SCHOOL DIST 402	790,614 SF	0 SF	790,614 SF	810 SF

T. 19 N., R. 3 E., W. M.

NW 1/4 SE 1/4 SEC. 8

SW 1/4 SE 1/4 SEC. 8

STA "R/Wa" 13+40.00
BEGIN R/W PLAN

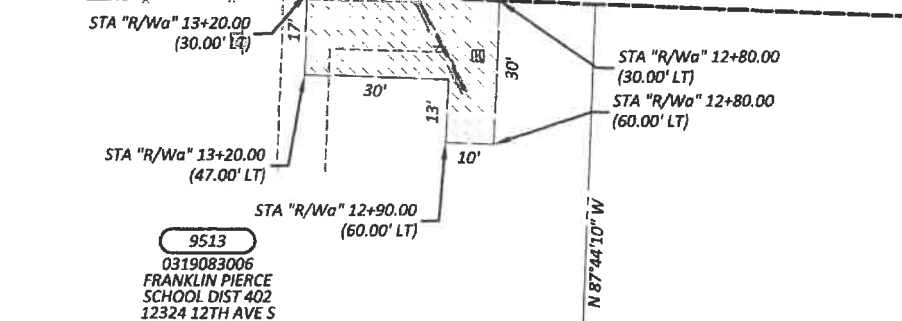
NOTE:

PROPERTY LINES OF THE ADJACENT PARCELS SHOWN ON THESE PLANS ARE LOCATED BY INTERPRETATION OF DEEDS AND OTHER INFORMATION FOUND IN THE PUBLIC RECORD AND SHOULD NOT BE CONSTRUED AS AN ACTUAL SURVEY.

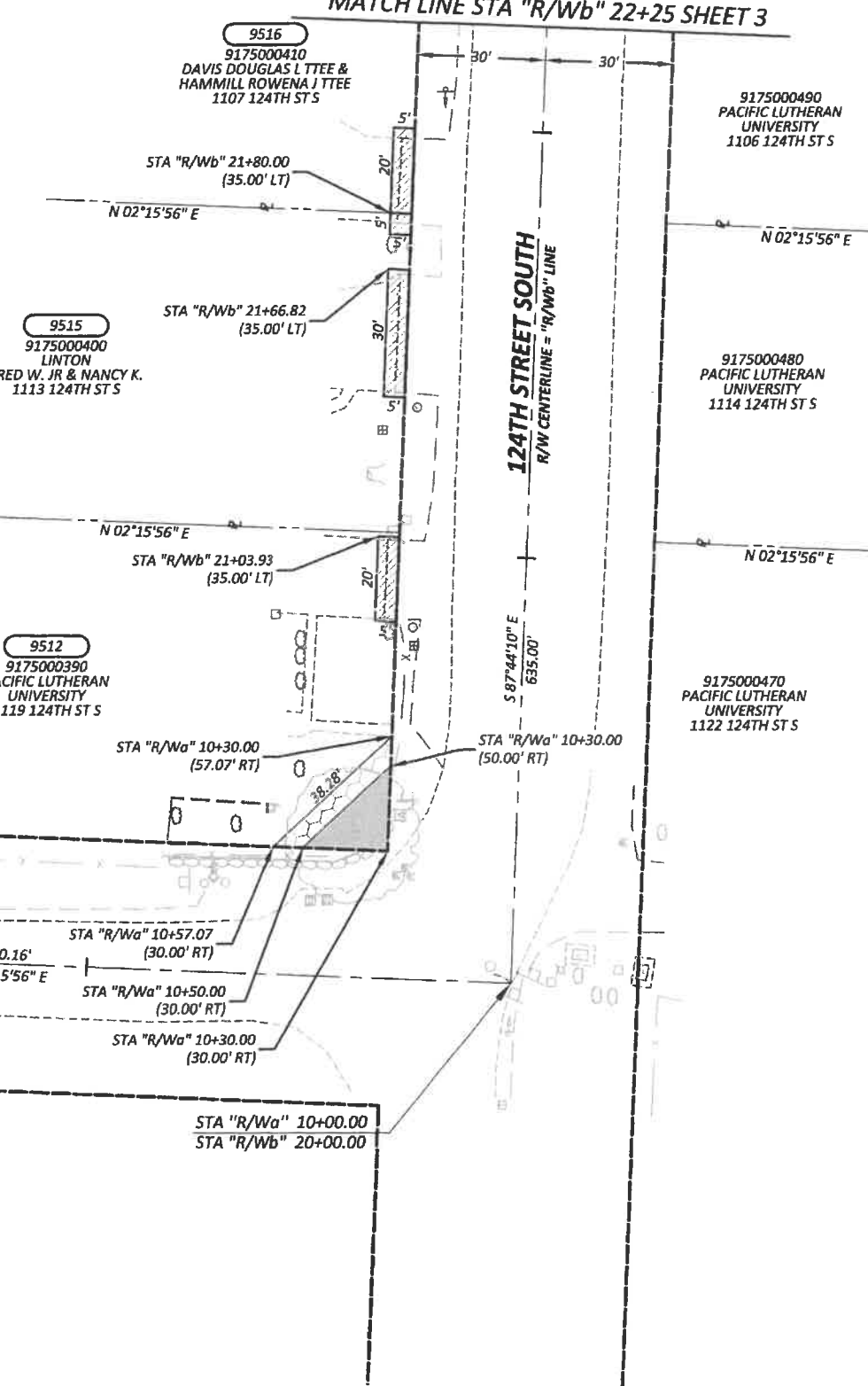
SURVEY NOTES:

HORIZONTAL DATUM:
NAD 83 (2011) 2010 AND
WSPC SOUTH ZONE

BASIS OF BEARING:
S 87°44'10" E WAS HELD BETWEEN 3" PIERCE COUNTY STANDARD BRASS MONUMENTS WITH AN 'X' & LS 42672 AT THE INTERSECTION OF 124TH ST. S. AND 10TH AVE. S. AND THE INTERSECTION OF 124TH ST. S. AND YAKIMA AVE. S.



MATCH LINE STA "R/Wb" 22+25 SHEET 3



DRAWN BY: R. ENGELHARDT	BOOK NO.: LOOSE LEAF
DESIGNED BY: F. MARTIN, P.L.S.	SURVEYED BY: G. DUSSAULT
CHECKED BY: L. ROSS, P.E.	DATE SURVEYED: APRIL 2018
REVIEWED BY: G. HESS, P.E.	DATE PLOTTED: FEB 15 2019

NO.	DATE	REVISION	BY	APPROVED

Pierce County
Planning & Public Works
Office of the County Engineer
Tacoma Mall Office Building
4301 South Pine Street, Suite 628
Tacoma, Washington 98409
An APWA Accredited Agency



Office of the County Engineer
APPROVED BY:
Brian D. Stacy 8-5-19
BRIAN D. STACY, P.E. DATE
LETICIA M. NEAL, P.E.
TRANSPORTATION IMPROVEMENT SECTION MANAGER

12TH AVENUE SOUTH / 124TH STREET SOUTH
123RD STREET SOUTH TO 10TH AVENUE SOUTH
RIGHT-OF-WAY PLAN
CRP 5877

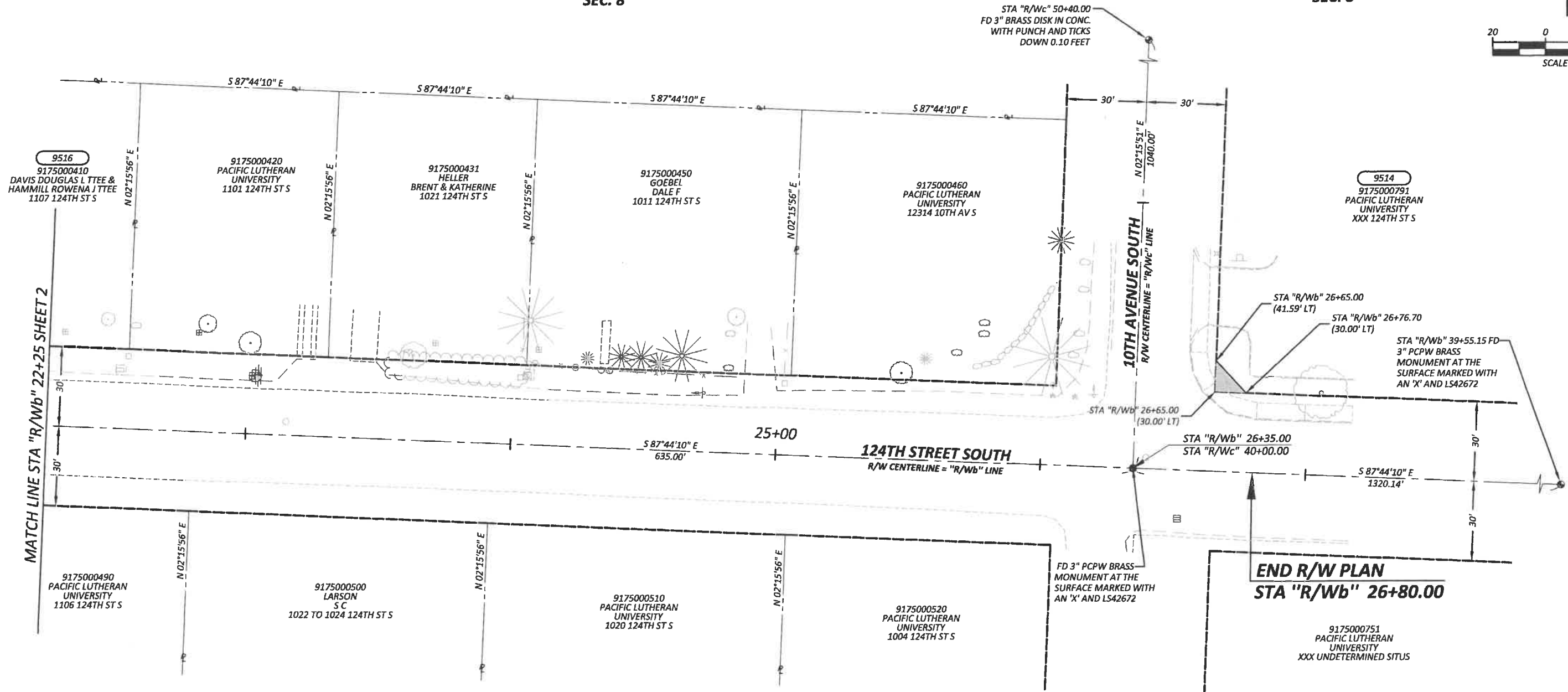
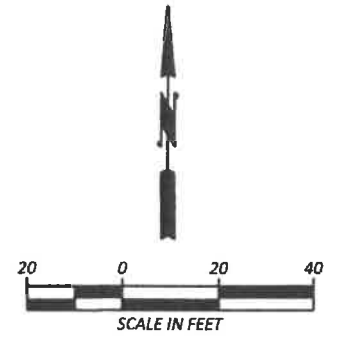
SHEET
2
OF
3

Drawing: P:\5877-12_AV_5-124_ST_SIDEDSIGN\DRAWINGS\RIGHT_OF_WAY\PLAN_SHEETS\02_5877_R/W PLAN.DWG Layout Tab: RW02
Xrefs: 5877SURVIND.DWG / 5877_DESIGN_TOPO_INDEX.DWG / 5877R/W_HATCH_INX.DWG
Date: 07/26/2019 Time: 08:05:20 AM Plotted by: FMARTIN

T. 19 N., R. 3 E., W. M.

SW 1/4 SE 1/4
SEC. 8

SE 1/4 SE 1/4
SEC. 8



MATCH LINE STA "R/Wb" 22+25 SHEET 2

END R/W PLAN
STA "R/Wb" 26+80.00

OWNERSHIP					
PARCEL NO.	NAME	TOTAL AREA	R/W ACQUISITION	REMAINDER	TEMP EASEMENT
9514	PACIFIC LUTHERAN UNIVERSITY	131,987 SF	68 SF	131,919 SF	0 SF

NOTE:
PROPERTY LINES OF THE ADJACENT PARCELS SHOWN ON THESE PLANS ARE LOCATED BY INTERPRETATION OF DEEDS AND OTHER INFORMATION FOUND IN THE PUBLIC RECORD AND SHOULD NOT BE CONSTRUED AS AN ACTUAL SURVEY.

Drawing: P:\5877-12_AV_5-124_ST_5\DESIGN\DRAWINGS\RIGHT_OF_WAY\PLAN_SHEETS\08B_5877_RW_PLAN2.DWG Layout: Tab: RW03
Xrefs: 5877SURVINDEX.DWG / 5877_DESIGN_TOPO_INDEX.DWG / 5877RW_HATCH_INX.DWG
Date: 07/29/2019 Time: 02:10:49 PM Plotted by: FMARTIN

DRAWN BY: R. ENGELHARDT	BOOK NO.: LOOSE LEAF
DESIGNED BY: F. MARTIN, P.L.S.	SURVEYED BY: G. DUSSAULT
CHECKED BY: L. ROSS, P.E.	DATE SURVEYED: APRIL 2018
REVIEWED BY: G. HESS, P.E.	DATE PLOTTED: FEB 15 2019

NO.	DATE	REVISION	BY	APPROVED

Pierce County
 Planning & Public Works
 Office of the County Engineer
 Tacoma Mall Office Building
 4301 South Pine Street, Suite 628
 Tacoma, Washington 98409
 An APWA Accredited Agency



Office of the County Engineer
 APPROVED BY:
 Brian D. Stacy 8-5-19
 BRIAN D. STACY, P.E. DATE
 LETTICIA M. NEAL, P.E.
 TRANSPORTATION IMPROVEMENT SECTION MANAGER

12TH AVENUE SOUTH / 124TH STREET SOUTH
123RD STREET SOUTH TO 10TH AVENUE SOUTH
RIGHT-OF-WAY PLAN
CRP 5877

SHEET
3
OF
3