



AIRPORT AND FERRY DIVISION MEMORANDUM

February 7, 2014

Subject: 2013 Year End Ferry Performance Measures

This memorandum and the attached charts provide the Pierce County Ferry Performance Measures for 2013. Historic trend charts are also included to provide a basis for performance comparison.

This report includes four sections, in the following order:

- Ridership
- Monthly Ticket Sales
- Vehicles Left Behind
- On-Time/Delay

Subtotals for Passengers, Vehicles, and Exempt Categories are reported. Other than cars left behind, all ridership statistics are one-way figures.

2013 highlights include:

- Ridership Year To Date for 2013 (183,594 riders) is up 0.10% from 2012 (a difference of 189 riders)
 - Walk-on Passengers
 - Adults decreased 4.4% from 2012 (a difference of 1,092 riders)
 - Youth ridership increased 1.2% from 2012 (a difference of 271 riders)
 - Senior / Disabled increased 2.5% from 2012 (a difference of 434 riders)
 - Commuters were up 1.0% from 2012 (a difference of 225 riders)
 - Vehicles up to 21'
 - Driver ridership was down 4.3% from 2012 (a difference of 1,099 riders)
 - Commuter ridership was up 6.3% (a difference of 3,914 riders)
 - Senior/Disabled ridership decreased 11.9% (a difference of 1,016 riders)
 - Commuter motorcycle riders decreased 19.4% from 2012 (a difference of 96 riders)
- 2013 year to date vehicles left behind is 2,133. This is a decrease of 0.4% from year to date from December of 2012 of 2,143 vehicles.
- The ferry operated 95.8% on time for 10,311 trips in 2013
 - 431 delayed departures were recorded. Causes of delays included:
 - Full Load – 171 trips
 - Train – 93 trips
 - Other – 71 trips
 - Overload – 35 trips
 - Mechanics – 21 trips
 - Power Outage – 13 trips
 - Police – 12 trips
 - Weather – 8 trips
 - Tide – 2 trips

Respectfully submitted,

Lauren "Lj" Behm
Airport and Ferry Analyst
Pierce County Public Works and Utilities
D: 253.798.2421
LBehm@co.pierce.wa.us

Attachments:

- 2013 Ridership
- 2012 Ridership
- 2011 Ridership
- Monthly Ticket Sales – 2009 to Dec. 2013
- Vehicles Left Behind 2009 to Dec. 2013
- On-Time/Delay Report Dec. 2013

Pierce County Ferry - 2013 Ridership

Combined Islands	Jan-13 OUT	Feb-13 OUT	Mar-13 OUT	Apr-13 OUT	May-13 OUT	Jun-13 OUT	Jul-13 OUT	Aug-13 OUT	Sep-13 OUT	Oct-13 OUT	Nov-13 OUT	Dec-13 OUT	2013 TOTALS	
Passengers														
Adults	1,231	1,167	1,502	1,408	1,976	2,344	3,850	3,878	1,886	1,436	1,679	1,590	23,947	Total Passengers 86,617
Youth (Ages 6-18)	1,569	1,600	1,792	1,651	2,172	1,967	2,721	2,597	1,749	1,762	1,688	1,610	22,878	
Children (Under Age 6)	43	55	28	76	73	28	57	32	19	203	26	6	646	
Senior/Disabled Citizens	1,121	1,086	1,260	1,209	1,488	1,604	1,977	2,069	1,527	1,345	1,340	1,274	17,300	
Commuter Passengers	1,785	1,606	1,876	1,858	1,862	1,833	1,874	1,980	1,737	1,688	1,871	1,876	21,846	
Monthly Passenger Total	5,749	5,514	6,458	6,202	7,571	7,776	10,479	10,556	6,918	6,434	6,604	6,356	86,617	
Vehicles														
Up to 21' and Driver	1,569	1,499	1,816	1,615	2,116	2,089	3,339	3,757	1,721	1,590	1,818	1,655	24,584	Total Vehicles 96,914
Up to 21' and Sr/Disabled	531	467	600	607	606	654	790	857	600	647	609	538	7,506	
Up to 21' and Commuter	4,676	4,347	4,905	4,814	5,483	5,570	5,571	5,841	5,104	5,226	5,155	5,155	61,847	
Over 21' to under 30'	84	69	81	74	85	95	124	160	117	129	80	48	1,146	
30' to under 40'	44	51	45	58	67	88	111	122	84	82	45	43	840	
40' to under 50'	5	6	12	19	16	18	30	28	15	15	5	4	173	
50' to under 60'	12	8	5	8	5	1	0	8	10	10	3	3	73	
60' to under 70'	9	4	6	9	6	5	5	6	7	6	2	4	69	
70' to under 80'	2	0	0	4	1	1	1	2	26	2	3	0	42	
80' to under 90'	0	0	0	0	0	0	0	0	0	0	0	0	0	
90' and greater	0	0	0	0	0	0	0	0	0	0	0	0	0	
Motorcycle w/Driver	1	3	14	8	26	29	48	66	15	11	3	2	226	
Motorcycle w/Commuter	3	18	17	23	38	60	90	54	33	30	18	14	398	
3-Wheel Vehicles	0	0	0	1	4	0	2	1	0	1	0	1	10	
Monthly Vehicle Total	6,936	6,472	7,501	7,240	8,453	8,610	10,111	10,902	7,732	7,749	7,741	7,467	96,914	
Non-Exempt Total														
Monthly Non-Exempt Total	12,685	11,986	13,959	13,442	16,024	16,386	20,590	21,458	14,650	14,183	14,345	13,823	183,531	183,531
Exempt														
Exempt Vehicles	9	6	7	1	7	3	2	0	0	6	0	1	42	Total Exempt 63
Exempt Passengers	2	2	1	1	4	5	2	0	0	3	0	1	21	
Monthly Exempt Total	11	8	8	2	11	8	4	0	0	9	0	2	63	
Other - NOT INCLUDED														
Cars Left Behind	1	3	6	29	84	136	402	734	625	14	73	26	2,133	
Totals	12,696	11,994	13,967	13,444	16,035	16,394	20,594	21,458	14,650	14,192	14,345	13,825	183,594	
Change from 2012	8.44%	-3.28%	2.70%	-5.51%	-4.67%	1.79%	3.35%	-0.61%	-8.16%	-2.75%	9.30%	3.51%	0.10%	

**Anderson & Ketron
Island**

Pierce County Public Works & Utilities
Airport and Ferry Division
2702 South 42nd Street, Suite 201 Tacoma, WA 98409

Total Passengers	86,617
Total Vehicles	96,914
Total Exempt	63
Total Ridership	183,594

Pierce County Ferry - 2012 Ridership

Combined Islands	Jan-12 OUT	Feb-12 OUT	Mar-12 OUT	Apr-12 OUT	May-12 OUT	Jun-12 OUT	Jul-12 OUT	Aug-12 OUT	Sep-12 OUT	Oct-12 OUT	Nov-12 OUT	Dec-12 OUT	2012 TOTALS	
Passengers														
Adults	1,196	1,378	1,579	1,856	2,399	2,095	3,447	3,962	2,364	1,577	1,513	1,673	25,039	Total Passengers 87,972
Youth (Ages 6-18)	1,342	1,503	1,724	1,683	2,162	1,840	2,463	2,997	1,897	1,829	1,599	1,568	22,607	
Children (Under Age 6)	91	124	92	183	335	376	255	64	125	67	68	59	1,839	
Senior/Disabled Citizens	1,037	1,030	1,136	1,228	1,536	1,541	1,867	2,019	1,591	1,386	1,225	1,270	16,866	
Commuter Passengers	1,666	1,684	1,793	1,681	1,864	1,960	1,895	1,952	1,796	1,985	1,665	1,680	21,621	
Monthly Passenger Total	5,332	5,719	6,324	6,631	8,296	7,812	9,927	10,994	7,773	6,844	6,070	6,250	87,972	
Vehicles														
Up to 21' and Driver	1,354	1,676	1,795	2,062	2,393	2,007	3,327	3,557	2,342	1,734	1,700	1,736	25,683	Total Vehicles 95,334
Up to 21' and Sr/Disabled	834	646	678	749	669	638	823	886	709	705	626	559	8,522	
Up to 21' and Commuter	4,036	4,197	4,624	4,499	5,132	5,330	5,398	5,593	4,816	5,063	4,559	4,686	57,933	
Over 21' to under 30'	68	65	70	104	111	123	143	155	97	86	75	58	1,155	
30' to under 40'	45	31	45	87	70	86	99	141	69	67	53	43	836	
40' to under 50'	3	4	7	13	16	17	34	34	12	18	9	8	175	
50' to under 60'	1	1	5	3	6	9	10	20	4	3	4	3	69	
60' to under 70'	2	3	5	6	9	5	9	10	7	6	9	5	76	
70' to under 80'	0	0	1	6	6	2	0	4	2	2	1	2	26	
80' to under 90'	0	0	0	0	0	0	0	0	0	0	0	0	0	
90' and greater	0	0	0	0	0	0	0	0	0	0	0	2	2	
Motorcycle w/Driver	10	17	14	34	48	30	59	75	38	21	3	1	350	
Motorcycle w/Commuter	8	29	22	29	46	35	88	118	69	43	6	1	494	
3-Wheel Vehicles	1	0	0	0	2	1	3	2	3	1	0	0	13	
Monthly Vehicle Total	6,362	6,669	7,266	7,592	8,508	8,283	9,993	10,595	8,168	7,749	7,045	7,104	95,334	
Non-Exempt Total														
Monthly Non-Exempt Total	11,694	12,388	13,590	14,223	16,804	16,095	19,920	21,589	15,941	14,593	13,115	13,354	183,306	183,306
Exempt														
Exempt Vehicles	7	7	2	4	8	5	4	0	7	1	5	0	50	Total Exempt 99
Exempt Passengers	7	6	8	1	9	6	2	0	3	0	5	2	49	
Monthly Exempt Total	14	13	10	5	17	11	6	0	10	1	10	2	99	
Other - NOT INCLUDED														
Cars Left Behind	40	12	11	30	279	43	539	941	187	43	17	1	2,143	
Totals	11,708	12,401	13,600	14,228	16,821	16,106	19,926	21,589	15,951	14,594	13,125	13,356	183,405	
Change from 2011	-12.45%	No Change	-2.29%	-1.82%	9.65%	-4.31%	-5.45%	-0.03%	-11.69%	-2.14%	-7.09%	-7.98%	-3.80%	

*Anderson & Ketron
Island*

Pierce County Public Works & Utilities
Airport and Ferry Division
2702 South 42nd Street, Suite 201
Tacoma, WA 98409

Total Passengers	87,972
Total Vehicles	95,334
Total Exempt	99
Total Ridership	183,405

Pierce County Ferry - 2011 Ridership

Combined Islands	Jan-11 OUT	Feb-11 OUT	Mar-11 OUT	Apr-11 OUT	May-11 OUT	Jun-11 OUT	Jul-11 OUT	Aug-11 OUT	Sep-11 OUT	Oct-11 OUT	Nov-11 OUT	Dec-11 OUT	2011 TOTALS	
Passengers														
Adults	1,286	1,389	1,317	1,623	1,979	2,176	3,874	3,796	2,640	1,716	1,575	1,655	25,026	Total Ticketed Passengers 90,170
Youth (Ages 5-18)	1,327	1,299	1,486	1,586	1,778	1,990	3,155	2,782	2,496	1,748	1,781	1,707	23,135	
Children (Under Age 5)	109	92	106	189	160	113	55	169	189	115	101	135	1,533	
Senior/Disabled Citizens	1,217	1,155	1,275	1,358	1,473	1,840	1,992	2,212	1,748	1,480	1,497	1,449	18,696	
Commuter Passengers	1,845	1,580	1,873	1,690	1,694	1,918	1,920	1,971	1,919	1,922	1,757	1,691	21,780	
Monthly Passenger Total	5,784	5,515	6,057	6,446	7,084	8,037	10,996	10,930	8,992	6,981	6,711	6,637	90,170	
Vehicles														
Up to 21' and Driver	1,666	1,588	1,609	1,978	2,126	2,093	3,412	3,476	2,694	1,891	1,796	1,952	26,281	Total Ticketed Vehicles 97,076
Up to 21' and Sr/Disabled	1,392	1,241	1,371	1,371	1,025	749	875	944	986	1,400	1,363	1,406	14,123	
Up to 21' and Commuter	3,861	3,492	4,171	4,042	4,468	5,377	5,346	5,599	4,788	4,238	3,945	4,188	53,515	
Over 21' to under 30'	62	72	86	108	81	120	132	126	136	106	74	60	1,163	
30' to under 40'	32	36	55	82	81	101	104	118	99	57	56	38	859	
40' to under 50'	2	8	8	15	23	26	25	23	15	17	9	4	175	
50' to under 60'	11	4	11	11	6	14	12	25	9	10	5	1	119	
60' to under 70'	8	8	9	11	10	14	8	2	19	12	7	7	115	
70' to under 80'	0	4	11	2	22	4	8	9	4	1	0	1	66	
80' to under 90'	0	0	0	0	0	1	0	0	0	0	0	0	1	
90' and greater	0	0	0	0	0	0	0	0	0	0	0	0	0	
Motorcycle w/Driver	17	17	8	15	26	34	41	56	76	13	2	7	312	
Motorcycle w/Commuter	13	18	12	21	33	51	60	60	25	27	11	13	344	
3-Wheel Vehicles	0	0	0	0	0	0	2	1	0	0	0	0	3	
Monthly Vehicle Total	7,064	6,488	7,351	7,656	7,901	8,584	10,025	10,439	8,851	7,772	7,268	7,677	97,076	
Non-Exempt Total														
Monthly Non-Exempt Total	12,848	12,003	13,408	14,102	14,985	16,621	21,021	21,369	17,843	14,753	13,979	14,314	187,246	187,246
Exempt														
Exempt Vehicles	221	140	187	173	162	101	35	128	148	103	98	126	1,622	Total Exempt 3,396
Exempt Passengers	305	250	325	218	193	110	20	99	72	57	50	75	1,774	
Monthly Exempt Total	526	390	512	391	355	211	55	227	220	160	148	201	3,396	
Other - NOT INCLUDED														
Cars Left Behind	45	16	12	31	374	83	815	878	289	75	20	20	2,658	

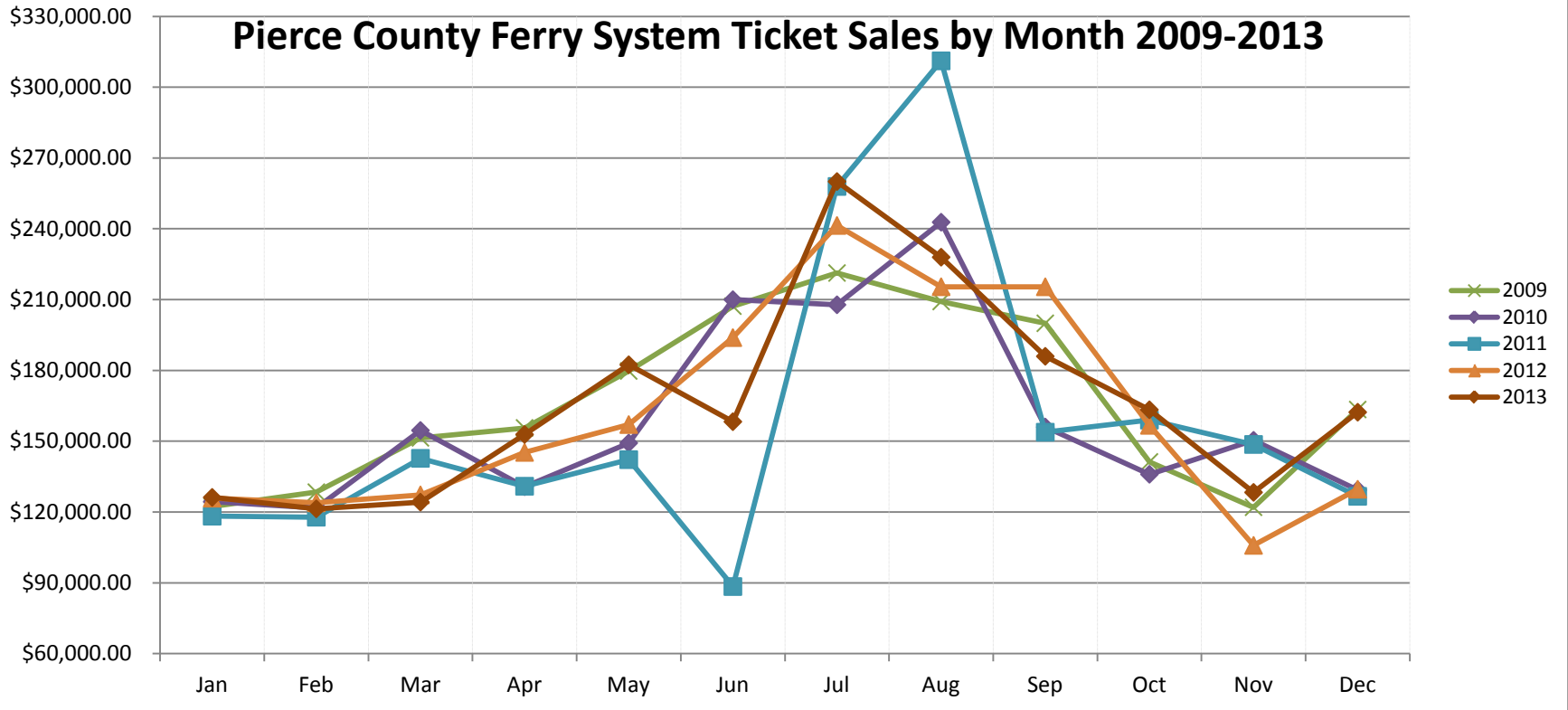
Totals	13,374	12,393	13,920	14,493	15,340	16,832	21,076	21,596	18,063	14,913	14,127	14,515	190,642
---------------	---------------	---------------	---------------	---------------	---------------	---------------	---------------	---------------	---------------	---------------	---------------	---------------	----------------

*Anderson & Ketron
Island*

Pierce County Public Works & Utilities
Airport and Ferry Division
9850 64th Street West
University Place, WA 98467

Total Passengers	90,170
Total Vehicles	97,076
Total Exempt	3,396
Total Ridership	190,642

Pierce County Ferry System Ticket Sales by Month 2009-2013



Month	2007	2008	2009	2010	2011	2012	2013
Jan	\$ 129,268.32	\$ 115,432.17	\$ 122,279.36	\$ 124,356.96	\$ 118,226.57	\$ 125,848.85	\$ 126,194.90
Feb	\$ 143,130.42	\$ 144,603.60	\$ 128,404.15	\$ 121,747.70	\$ 117,802.07	\$ 123,887.79	\$ 121,360.59
Mar	\$ 136,424.02	\$ 134,248.65	\$ 151,404.21	\$ 154,561.95	\$ 142,731.30	\$ 127,252.61	\$ 124,175.22
Apr	\$ 118,946.79	\$ 164,273.80	\$ 155,617.38	\$ 130,720.59	\$ 130,913.99	\$ 145,252.73	\$ 152,858.25
May	\$ 112,580.55	\$ 106,153.90	\$ 179,739.80	\$ 149,235.10	\$ 142,190.35	\$ 157,053.75	\$ 182,381.05
Jun	\$ 249,848.68	\$ 223,702.35	\$ 207,216.05	\$ 209,963.92	\$ 88,418.55	\$ 193,894.85	\$ 158,264.21
Jul	\$ 270,590.25	\$ 229,920.35	\$ 221,263.24	\$ 207,802.90	\$ 257,936.76	\$ 241,410.40	\$ 260,026.00
Aug	\$ 215,948.50	\$ 161,008.56	\$ 209,176.33	\$ 242,789.01	\$ 311,151.86	\$ 215,443.45	\$ 227,964.00
Sep	\$ 137,058.65	\$ 224,296.98	\$ 199,967.15	\$ 155,993.36	\$ 153,800.21	\$ 215,426.75	\$ 185,973.00
Oct	\$ 210,968.99	\$ 84,997.30	\$ 141,224.85	\$ 135,989.00	\$ 158,935.20	\$ 156,719.16	\$ 163,319.00
Nov	\$ 100,766.15	\$ 155,364.96	\$ 121,995.35	\$ 150,377.60	\$ 148,617.30	\$ 105,860.25	\$ 128,319.00
Dec	\$ 189,251.05	\$ 142,130.85	\$ 163,421.17	\$ 129,333.65	\$ 126,643.80	\$ 129,639.40	\$ 162,283.00
Totals	\$ 2,014,782.37	\$ 1,886,133.47	\$ 2,001,709.04	\$ 1,912,871.74	\$ 1,897,367.96	\$ 1,937,689.99	\$ 1,993,118.22

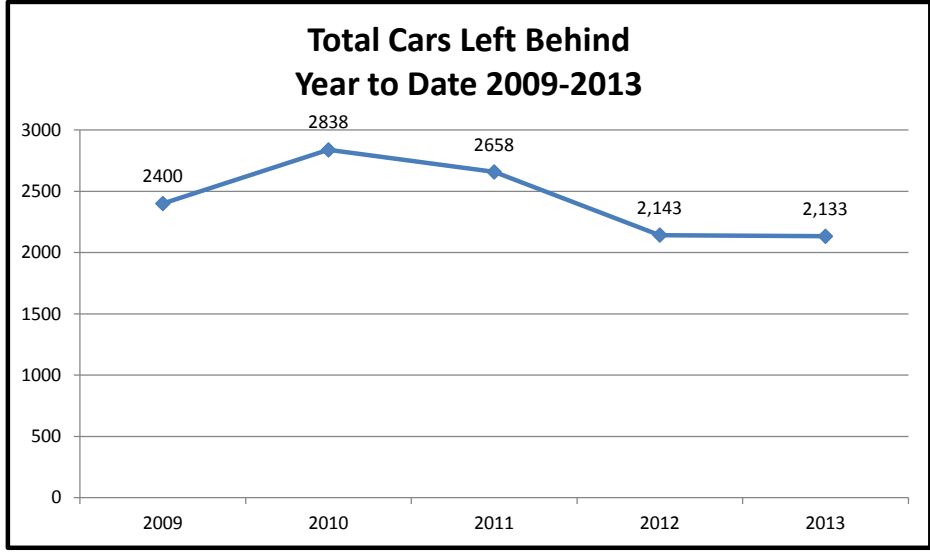
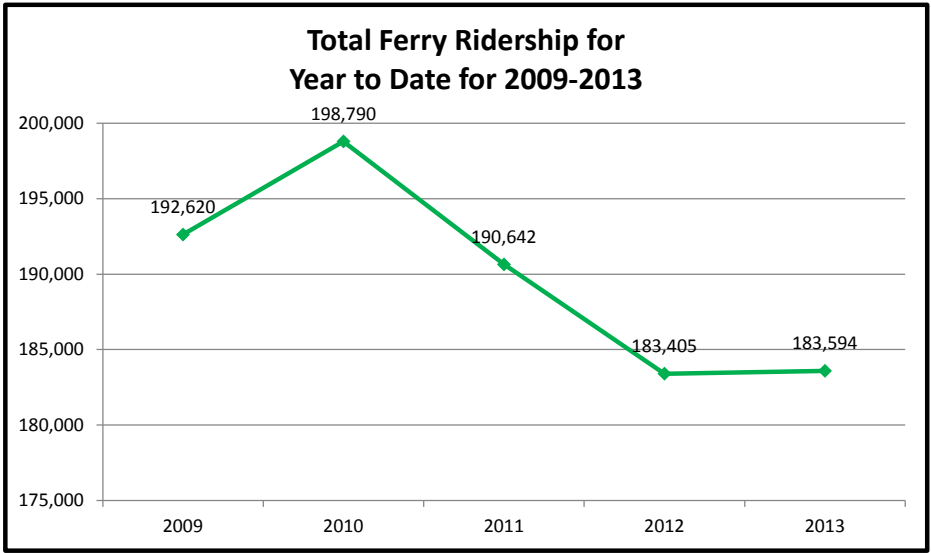
Pierce County Ferry - 2009 to 2013 Ridership

Year to Date Totals

Combined Islands	2009	2010	2011	2012	2013	2007-2013 AVERAGES
Passengers						
YTD Passenger Total	88,319	94,716	90,170	87,972	86,617	89,559
Vehicles						
YTD Vehicle Total	101,231	99,139	97,076	95,334	96,914	97,939
Exempt						
YTD Exempt Total*	3,070	4,935	3,396	99	63	2,313
Other - NOT INCLUDED						
Monthly Cars Left Behind**	2400	2838	2658	2,143	2,133	2,434
Totals	192,620	198,790	190,642	183,405	183,594	189,810

Anderson & Ketron Island

*Criteria for an exempt vehicle changed January 2012
 ** Steilacoom II was leased to WSF from Jan. 2008 - Feb. 2011



Ferry On-Time/Delay Report From Jan.01 2013 To Dec.31 2013

Total On Time Departure Count	Total Delayed Departure Count	Percentage On Time
9880	431	95.8%

Total On-Time/Delay Percentage

Delay Distribution by Reasons

