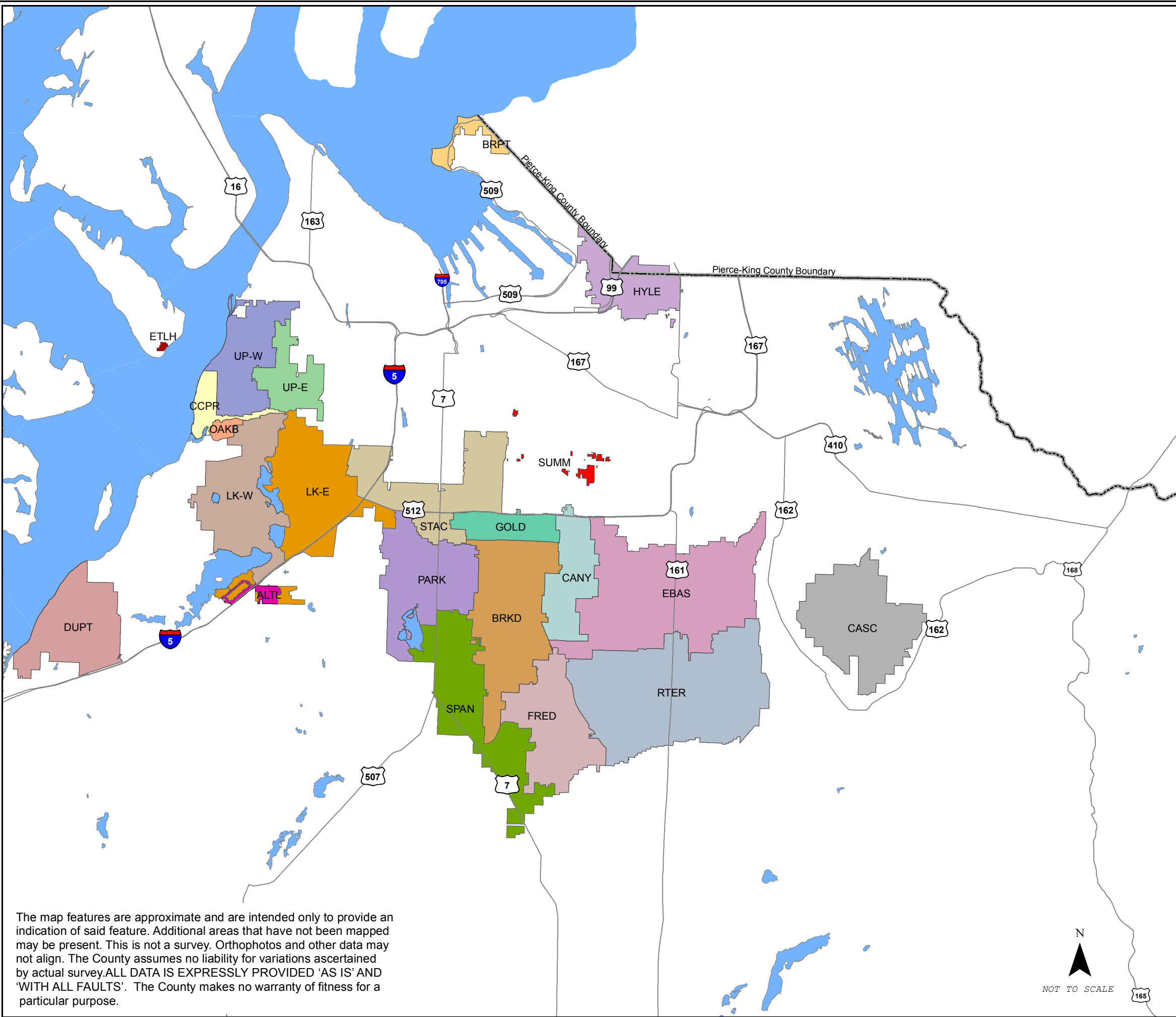


Pierce County Sewer Connection Charge per Residential Equivalent (RE)*



Sewer Basin Identification	Basin Area Charge	Treatment Plant Capacity Charge
American Lake Gardens/ Tillicum (ALTL)	\$ 1,433.00	\$ 3,491.00
Brookdale (BRKD)	\$ 1,737.00	\$ 3,491.00
Brown's Point (BRPT)	\$ 1,410.00	\$ 3,491.00
Canyon (CANY)	\$ 2,810.00	\$ 3,491.00
Cascadia (CASC)	\$0	\$0
Chambers Creek Properties (CCPR)	\$ 529.00	\$ 3,491.00
DuPont (DUPT)	\$ 1,653.00	\$ 3,491.00
East Basin (EBAS)	\$ 3,656.00	\$ 3,491.00
Etloh (ETLH)	\$0	\$ 15,256.00
Frederickson (FRED)	\$ 3,012.00	\$ 3,491.00
Golden Given (GOLD)	\$ 1,215.00	\$ 3,491.00
Hylebos (HYLE)	\$ 1,840.00	\$ 3,491.00
Lakewood East (LK-E)	\$ 1,433.00	\$ 3,491.00
Lakewood West (LK-W)	\$ 3,140.00	\$ 3,491.00
Oakbrook (OAKB)	\$ 3,140.00	\$ 3,491.00
Parkland (PARK)	\$ 1,614.00	\$ 3,491.00
Rainier Terrace (RTER)	\$ 3,019.00	\$ 3,491.00
Spanaway (SPAN)	\$ 4,631.00	\$ 3,491.00
South Tacoma (STAC)	\$ 1,471.00	\$ 3,491.00
Summit (SUMM)	\$ 2,241.00	\$ 3,491.00
University Place East (UP-E)	\$ 1,797.00	\$ 3,491.00
University Place West (UP-W)	\$ 529.00	\$ 3,491.00

The map features are approximate and are intended only to provide an indication of said feature. Additional areas that have not been mapped may be present. This is not a survey. Orthophotos and other data may not align. The County assumes no liability for variations ascertained by actual survey. ALL DATA IS EXPRESSLY PROVIDED 'AS IS' AND 'WITH ALL FAULTS'. The County makes no warranty of fitness for a particular purpose.



* 1 RE = 220 gallons per day



**Handout
H3
Revised
02/15/2019**