



AIRPORT AND FERRY DIVISION MEMORANDUM

April 20, 2017

Subject: April 2017 Ferry Performance Measures

This memorandum and the attached charts provide the Pierce County Ferry Performance Measures for April 2017. Historic trend charts are also included to provide a basis for performance comparison. Other than cars left behind, all ridership statistics are one-way figures.

Fare Revenue

MONTH	FARE REVENUE	BUDGETED FARE REVENUE
April 2017	\$129,663	\$179,750

Monthly revenues reported in the Performance Measures may vary based on the posting date used by Pierce County Budget & Finance.

April 2017 Ridership

RIDERSHIP CATEGORY	RIDERSHIP COUNT	PERCENT DIFFERENCE FROM 2016	DIFFERENCE IN RIDERS FROM 2016
YTD Total Ridership	57,843	8.04%	4,306
Monthly Total Ridership	15,765	2.79%	428
Walk-on Adults	1,867	0.00%	0
Walk-on Youth	1,689	3.11%	51
Walk-on Senior / Disabled	1,483	(0.27%)	-4
Walk-on Commuters	1,598	(11.86%)	-215
Vehicles up to 21' with Driver	2,218	10.62%	213
Vehicles up to 21' with Commuter	5,283	1.27%	66
Vehicles up to 21' with Senior/Disabled	899	13.22%	105
Commuter Motorcycles	27	(10.00%)	-3

Vehicles Left Behind in April

VEHICLES LEFT BEHIND 2017	VEHICLES LEFT BEHIND 2016	% CHG FROM 2016
72	50	44%

On-Time / Delayed Departures

% ON TIME	# OF TRIPS	TOTAL DELAYED TRIPS	CAUSE OF DELAYS
98.9%	854	9	FullLoad: 1 Train: 1 Weather: 1 Stalled Vehicle: 1 Scheduled_Ketron: 1 Unknown**: 4

Respectfully submitted,
Nick Lacsina
Management Analyst
Pierce County Public Works
D: 253.798.6355 | nlacsin@co.pierce.wa.us

- Attachments:**
- 2017 Ridership
 - 2016 Ridership
 - Monthly ridership comparison
 - YTD ridership comparison
 - Monthly Ticket Sales – April 2011 to April 2016
 - On-time delay report for April

*Currently changing our data collection methods to ensure every delay has a cause recorded.

Pierce County Ferry - 2017 Ridership Anderson & Ketron Islands

Combined Islands	Jan-17 OUT	Feb-17 OUT	Mar-17 OUT	Apr-17 OUT	May-17 OUT	Jun-17 OUT	Jul-17 OUT	Aug-17 OUT	Sep-17 OUT	Oct-17 OUT	Nov-17 OUT	Dec-17 OUT	2017 TOTALS	
Passengers														
Adults	1,396	1,342	1,736	1,867	0	0	0	0	0	0	0	0	6,341	Total Passengers 24,653
Youth (Ages 6-18)	1,509	1,330	1,631	1,689	0	0	0	0	0	0	0	0	6,159	
Children (Under Age 6)	110	113	122	191	0	0	0	0	0	0	0	0	536	
Senior/Disabled Citizens	1,282	1,238	1,415	1,483	0	0	0	0	0	0	0	0	5,418	
Commuter Passengers	1,533	1,393	1,675	1,598	0	0	0	0	0	0	0	0	6,199	
<i>Monthly Passenger Total</i>	5,830	5,416	6,579	6,828	0	0	0	0	0	0	0	0	24,653	
Vehicles														
Up to 21' and Driver	1,579	1,509	1,950	2,218	0	0	0	0	0	0	0	0	7,256	Total Vehicles 32,688
Up to 21' and Sr/Disabled	720	654	866	899	0	0	0	0	0	0	0	0	3,139	
Up to 21' and Commuter	5,208	4,953	5,647	5,283	0	0	0	0	0	0	0	0	21,091	
Over 21' to under 30'	108	97	158	147	0	0	0	0	0	0	0	0	510	
30' to under 40"	68	78	104	106	0	0	0	0	0	0	0	0	356	
40' to under 50'	14	19	20	26	0	0	0	0	0	0	0	0	79	
50' to under 60'	10	8	8	17	0	0	0	0	0	0	0	0	43	
60' to under 70'	14	10	12	12	0	0	0	0	0	0	0	0	48	
70' to under 80'	3	1	6	2	0	0	0	0	0	0	0	0	12	
80' to under 90'	0	0	0	0	0	0	0	0	0	0	0	0	0	
90' and greater	0	0	0	0	0	0	0	0	0	0	0	0	0	
Motorcycle w/Driver	8	5	9	16	0	0	0	0	0	0	0	0	38	
Motorcycle w/Commuter	35	23	31	27	0	0	0	0	0	0	0	0	116	
3-Wheel Vehicles	0	0	0	0	0	0	0	0	0	0	0	0	0	
<i>Monthly Vehicle Total</i>	7,767	7,357	8,811	8,753	0	0	0	0	0	0	0	0	32,688	
Non-Exempt Total														
<i>Monthly Non-Exempt Total</i>	13,597	12,773	15,390	15,581	0	0	0	0	0	0	0	0	57,341	57,341
Exempt														
Exempt Vehicles	62	134	122	184	0	0	0	0	0	0	0	0	502	Total Exempt 502
Exempt Passengers	0	0	0	0	0	0	0	0	0	0	0	0	0	
<i>Monthly Exempt Total</i>	62	134	122	184	0	0	0	0	0	0	0	0	502	
Other - NOT INCLUDED														
Cars Left Behind	0	0	0	0	0	0	0	0	0	0	0	0	0	
Totals	13,659	12,907	15,512	15,765	0	0	0	0	0	0	0	0	57,843	
Change from 2016	5.71%	18.58%	7.77%	2.79%									8.04%	

Pierce County Public Works & Utilities
Airport and Ferry Division
2702 South 42nd Street, Suite 201
Tacoma, WA 98409

Total Passengers	24,653
Total Vehicles	32,688
Total Exempt	502
Total Ridership	57,843

Pierce County Ferry - 2016 Ridership Anderson & Ketron Islands

Combined Islands	Jan-16 OUT	Feb-16 OUT	Mar-16 OUT	Apr-16 OUT	May-16 OUT	Jun-16 OUT	Jul-16 OUT	Aug-16 OUT	Sep-16 OUT	Oct-16 OUT	Nov-16 OUT	Dec-16 OUT	2016 TOTALS	
Passengers														
Adults	1,403	982	1,603	1,867	2,690	2,541	3,972	4,186	2,594	1,377	1,577	1,885	26,677	Total Passengers 89,294
Youth (Ages 6-18)	1,402	1,203	1,590	1,638	1,996	1,958	2,604	1,993	2,101	1,491	1,639	1,545	21,160	
Children (Under Age 6)	50	34	87	159	160	81	144	619	257	76	106	234	2,007	
Senior/Disabled Citizens	1,331	1,133	1,397	1,487	1,746	1,708	1,769	2,042	1,741	1,409	1,366	1,588	18,717	
Commuter Passengers	1,703	1,385	1,900	1,813	1,964	1,939	1,544	1,830	1,719	1,580	1,681	1,675	20,733	
Monthly Passenger Total	5,889	4,737	6,577	6,964	8,556	8,227	10,033	10,670	8,412	5,933	6,369	6,927	89,294	
Vehicles														
Up to 21' and Driver	1,433	1,180	1,659	2,005	2,295	2,238	3,548	3,759	2,623	1,711	1,763	2,068	26,282	Total Vehicles 101,702
Up to 21' and Sr/Disabled	599	564	686	794	839	813	1,134	982	890	736	744	798	9,579	
Up to 21' and Commuter	4,829	4,211	5,185	5,217	5,561	5,644	4,504	5,796	5,371	5,199	5,054	5,404	61,975	
Over 21' to under 30'	62	59	113	127	115	109	124	189	121	109	88	101	1,317	
30' to under 40"	58	52	65	83	105	103	107	189	131	73	68	70	1,104	
40' to under 50'	10	6	10	15	31	26	34	46	27	13	24	17	259	
50' to under 60'	6	4	3	7	13	15	16	17	10	5	5	7	108	
60' to under 70'	3	6	8	11	9	20	19	15	19	8	22	14	154	
70' to under 80'	2	4	1	5	2	2	2	3	3	2	1	3	30	
80' to under 90'	0	0	0	0	0	6	0	0	0	0	0	0	6	
90' and greater	0	0	0	0	0	0	0	0	0	0	0	0	0	
Motorcycle w/Driver	2	8	19	47	24	18	55	106	56	14	11	5	365	
Motorcycle w/Commuter	16	21	23	30	40	57	105	44	67	42	42	34	521	
3-Wheel Vehicles	0	0	1	1	0	0	0	0	0	0	0	0	2	
Monthly Vehicle Total	7,020	6,115	7,773	8,342	9,034	9,051	9,648	11,146	9,318	7,912	7,822	8,521	101,702	
Non-Exempt Total														
Monthly Non-Exempt Total	12,909	10,852	14,350	15,306	17,590	17,278	19,681	21,816	17,730	13,845	14,191	15,448	190,996	190,996
Exempt														
Exempt Vehicles	10	18	30	24	21	10	0	35	38	16	27	16	245	Total Exempt 302
Exempt Passengers	2	15	14	7	14	3	2	0	0	0	0	0	57	
Monthly Exempt Total	12	33	44	31	35	13	** 2	35	38	16	27	16	302	
Other - NOT INCLUDED														
Cars Left Behind	32	26	13	50	487	247	702	510	301	0	0	0	2,368	
Totals	12,921	10,885	14,394	15,337	17,625	17,291	19,683	21,851	17,768	13,861	14,218	15,464	191,298	
Change from 2015	-3.31%	-13.46%	1.07%	2.95%	3.38%	-2.38%	-8.89%	8.98%	7.33%	-8.53%	13.14%	27.99%	1.83%	

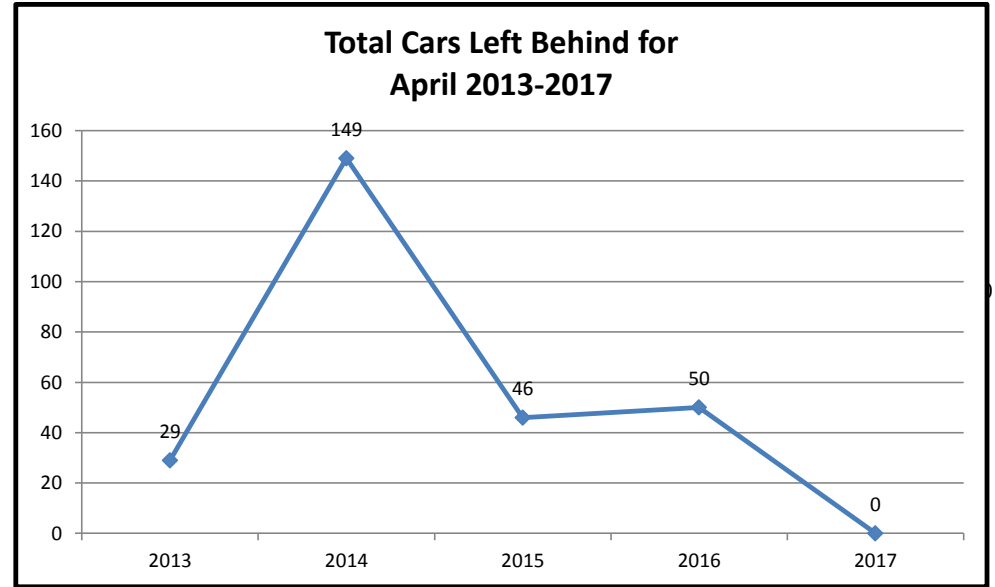
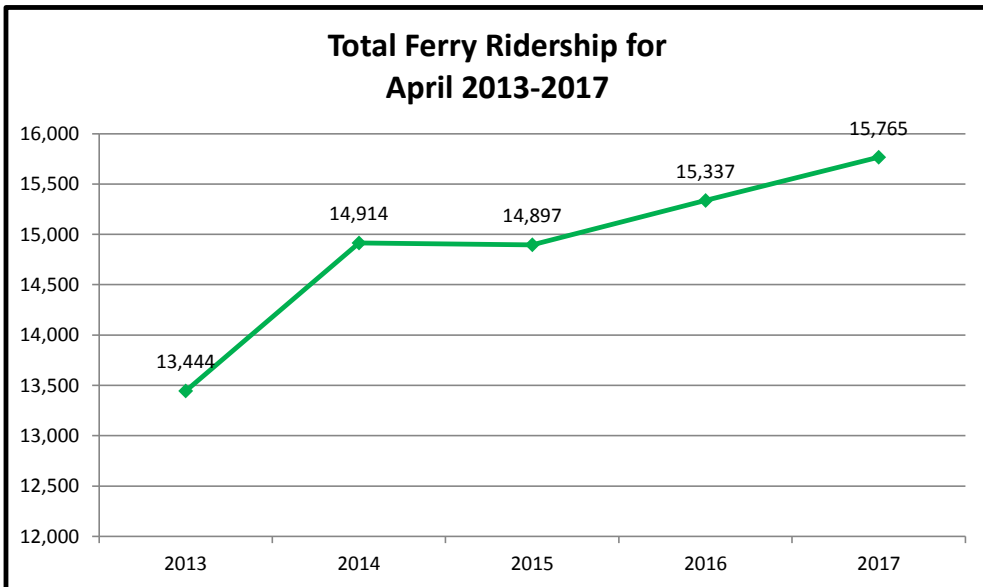
Pierce County Public Works & Utilities
Airport and Ferry Division
2702 South 42nd Street, Suite 201
Tacoma, WA 98409

Total Passengers	89,294
Total Vehicles	101,702
Total Exempt	302
Total Ridership	191,298

Pierce County Ferry - 2013 to 2017 Monthly Ridership For the Month of April

Combined Islands	2013	2014	2015	2016	2017	2013-2017 AVERAGES
Passengers						
Monthly Passenger Total	6,202	6,675	6,611	6,964	6,828	6,656
Vehicles						
Monthly Vehicle Total	7,240	8,239	8,262	8,342	8,753	8,167
Exempt						
Monthly Exempt Total*	2	0	24	31	184	48
Other - NOT INCLUDED						
Monthly Cars Left Behind**	29	149	46	50	0	55
Totals	13,444	14,914	14,897	15,337	15,765	14,871

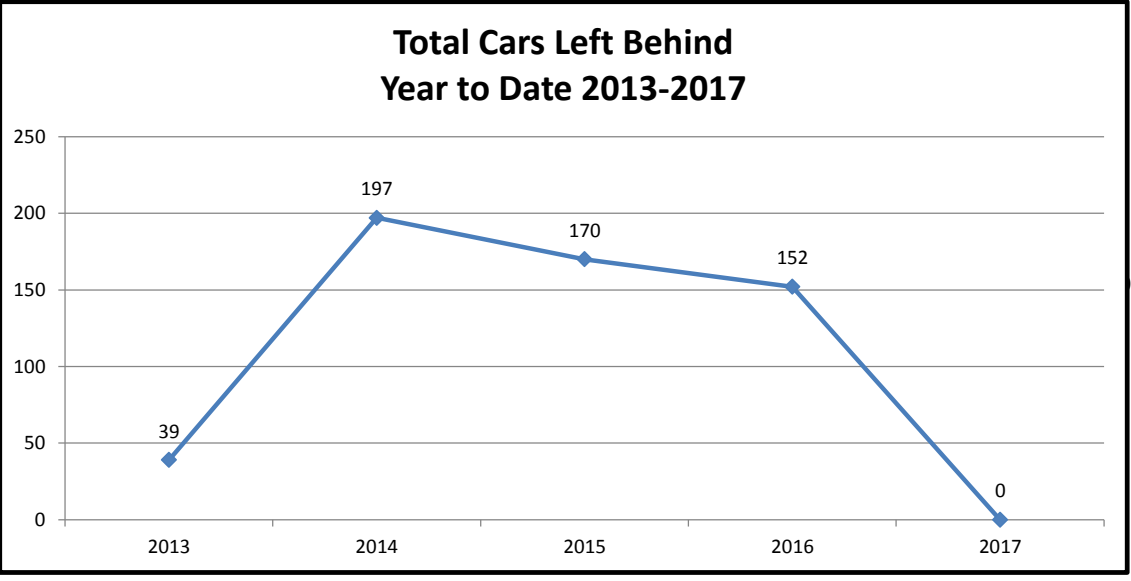
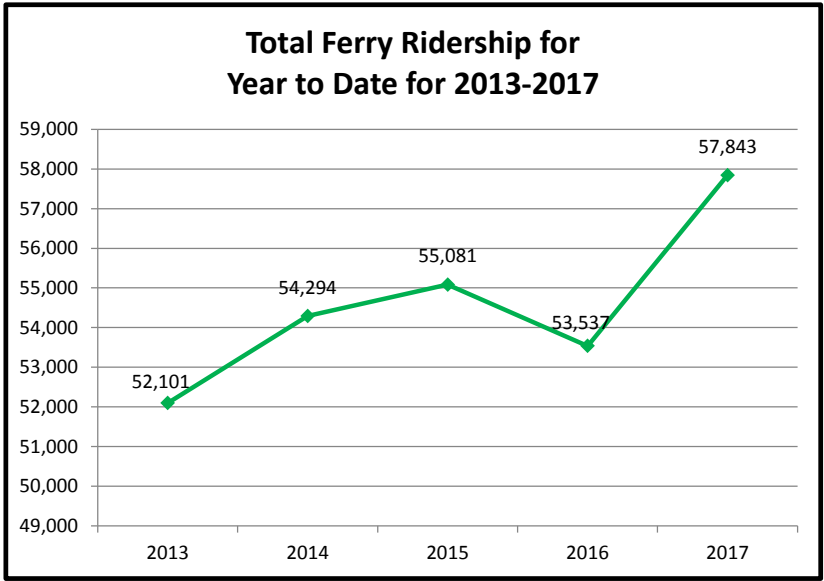
**Anderson & Ketron
Islands**



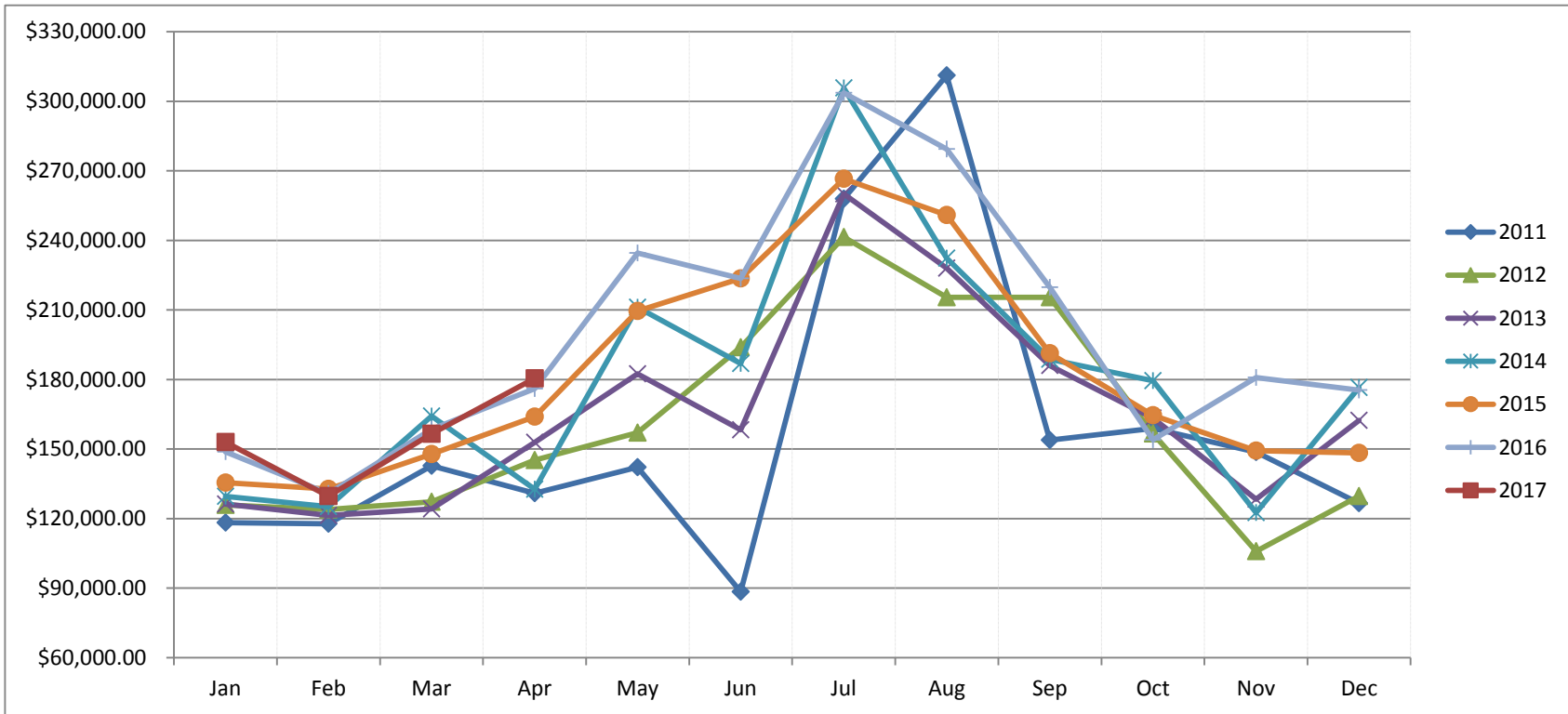
Pierce County Ferry 2013 - 2017 Year to Date Totals Through April

Combined Islands	2013	2014	2015	2016	2017	2013-2017 AVERAGES
Passengers						
YTD Passenger Total	23,923	24,377	24,620	24,167	24,653	24,348
Vehicles						
YTD Vehicle Total	28,149	29,917	30,406	29,250	32,688	30,082
Exempt						
YTD Exempt Total*	29	0	55	120	502	141
Other - NOT INCLUDED						
Monthly Cars Left Behind**	39	197	170	152	0	112
Totals	52,101	54,294	55,081	53,537	57,843	54,571

**Anderson & Ketron
Island**



Pierce County Ferry System Ticket Sales by Month 2011-2017



Month	2011	2012	2013	2014	2015	2016	2017
Jan	\$ 118,226.57	\$ 125,848.85	\$ 126,194.90	\$ 129,625.00	\$ 135,455.00	\$ 148,753.95	\$ 152,936.35
Feb	\$ 117,802.07	\$ 123,887.79	\$ 121,360.59	\$ 125,146.00	\$ 132,736.00	\$ 130,783.20	\$ 129,663.00
Mar	\$ 142,731.30	\$ 127,252.61	\$ 124,175.22	\$ 164,208.00	\$ 147,762.00	\$ 158,542.65	\$ 156,493.00
Apr	\$ 130,913.99	\$ 145,252.73	\$ 152,858.25	\$ 132,604.00	\$ 163,957.70	\$ 176,019.27	\$ 180,457.00
May	\$ 142,190.35	\$ 157,053.75	\$ 182,381.05	\$ 211,172.00	\$ 209,581.63	\$ 234,493.20	
Jun	\$ 88,418.55	\$ 193,894.85	\$ 158,264.21	\$ 186,820.00	\$ 223,529.80	\$ 223,570.55	
Jul	\$ 257,936.76	\$ 241,410.40	\$ 260,026.00	\$ 305,702.00	\$ 266,512.69	\$ 303,626.22	
Aug	\$ 311,151.86	\$ 215,443.45	\$ 227,964.00	\$ 232,362.00	\$ 250,957.44	\$ 279,322.38	
Sep	\$ 153,800.21	\$ 215,426.75	\$ 185,973.00	\$ 188,716.00	\$ 191,350.91	\$ 219,709.25	
Oct	\$ 158,935.20	\$ 156,719.16	\$ 163,319.00	\$ 179,409.00	\$ 164,579.42	\$ 153,994.35	
Nov	\$ 148,617.30	\$ 105,860.25	\$ 128,319.00	\$ 122,535.00	\$ 149,226.31	\$ 180,780.35	
Dec	\$ 126,643.80	\$ 129,639.40	\$ 162,283.00	\$ 176,474.00	\$ 148,272.10	\$ 175,444.45	
Totals	\$ 1,897,367.96	\$ 1,937,689.99	\$ 1,993,118.22	\$ 2,154,773.00	\$ 2,183,921.00	\$ 2,385,039.82	\$ 619,549.35

Ferry On-Time Delay Report from 4/1/2017 to 4/30/2017				
Total On-Tme Departure	Total Delayed Departure	Total Ferry Runs	Percentage on Time	Percentage on Time
845	9	854	0.989461358	98.9%

Delay by Reason	Number of Delays
FullLoad:	1
Train:	1
Weather:	1
Stalled_Vehicle:	1
Scheduled_Ketron	1
Unknown:	4
Total Delayed Trips	9

Total On-Time Departure:	98.90%	845
Total Delayed Departure:	1.10%	9

