



**AIRPORT AND FERRY DIVISION MEMORANDUM**

**December 5, 2018**

*Subject: November 2018 Ferry Performance Measures*

This memorandum and the attached charts provide the Pierce County Ferry Performance Measures for November 2018. Historic trend charts are also included to provide a basis for performance comparison. Other than cars left behind, all ridership statistics are one-way figures.

**Fare Revenue**

MONTH	FARE REVENUE	BUDGETED FARE REVENUE
November 2018	\$191,804	\$179,750

*Monthly revenues reported in the Performance Measures November vary based on the posting date used by Pierce County Finance Department.*

**November 2018 Ridership**

RIDERSHIP CATEGORY	RIDERSHIP COUNT	PERCENT DIFFERENCE FROM 2017	DIFFERENCE IN RIDERS FROM 2017
YTD Total Ridership	210,588	5.01%	10,049
Monthly Total Ridership	17,399	9.68%	1,536
Walk-on Adults	2,117	16.13%	294
Walk-on Youth	2,055	13.35%	242
Walk-on Senior / Disabled	1,659	9.58%	145
Walk-on Commuters	1,694	0.18%	3
Vehicles up to 21' with Driver	2,318	22.45%	425
Vehicles up to 21' with Commuter	6,031	6.01%	342
Vehicles up to 21' with Senior/Disabled	856	4.77%	39
Commuter Motorcycles	6	(80.00%)	-24

**Vehicles Left Behind in November**

VEHICLES LEFT BEHIND 2018	VEHICLES LEFT BEHIND 2017	% CHG FROM 2017
274	147	86%

**On-Time / Delayed Departures**

% ON TIME	# OF RUNS	TOTAL DELAYED TRIPS	CAUSE OF DELAYS								
95%	922	42	<table> <tr> <td>Full Load</td> <td>6</td> </tr> <tr> <td>Train</td> <td>18</td> </tr> <tr> <td>Weather</td> <td>3</td> </tr> <tr> <td>Scheduled Ketron</td> <td>15</td> </tr> </table>	Full Load	6	Train	18	Weather	3	Scheduled Ketron	15
Full Load	6										
Train	18										
Weather	3										
Scheduled Ketron	15										

Respectfully submitted,  
Nick Lacsina  
Management Analyst  
Pierce County Planning & Public Works  
D: 253.798.6355 | nick.lacsina@piercecountywa.gov

**Attachments:**  
- 2018 Ridership  
- 2017 Ridership  
- Monthly ridership comparison  
- YTD ridership comparison  
- Monthly Ticket Sales  
- On-time delay report

## Pierce County Ferry - 2018 Ridership Anderson & Ketron Islands

Combined Islands	Jan-18 OUT	Feb-18 OUT	Mar-18 OUT	Apr-18 OUT	May-18 OUT	Jun-18 OUT	Jul-18 OUT	Aug-18 OUT	Sep-18 OUT	Oct-18 OUT	Nov-18 OUT	Dec-18 OUT	2018 TOTALS	
<b>Passengers</b>														
Adults	1,566	1,471	2,033	1,988	2,754	3,142	5,196	4,089	2,627	1,943	2,117	0	28,926	<b>Total Passengers</b>
Youth (Ages 6-18)	1,551	1,485	1,842	1,656	2,397	2,395	3,937	3,350	2,254	2,193	2,055	0	25,115	
Children (Under Age 6)	120	123	188	207	431	472	621	657	327	174	205	0	3,525	
Senior/Disabled Citizens	1,403	1,273	1,560	1,566	1,800	1,968	2,340	2,218	1,852	1,769	1,659	0	19,408	
Commuter Passengers	1,573	1,373	1,546	1,489	1,742	1,896	1,979	2,010	1,839	1,893	1,694	0	19,034	
<b>Monthly Passenger Total</b>	<b>6,213</b>	<b>5,725</b>	<b>7,169</b>	<b>6,906</b>	<b>9,124</b>	<b>9,873</b>	<b>14,073</b>	<b>12,324</b>	<b>8,899</b>	<b>7,972</b>	<b>7,730</b>	<b>0</b>	<b>96,008</b>	
<b>Vehicles</b>														
Up to 21' and Driver	1,835	1,752	2,384	3,250	2,749	2,925	4,379	3,887	2,507	2,116	2,318	0	30,102	<b>Total Vehicles</b>
Up to 21' and Sr/Disabled	824	734	987	1,046	1,104	1,093	1,312	1,224	867	900	856	0	10,947	
Up to 21' and Commuter	5,547	4,985	5,684	4,633	6,439	6,708	6,699	6,794	6,315	6,652	6,031	0	66,487	
Over 21' to under 30'	109	88	115	129	152	139	182	127	120	120	116	0	1,397	
30' to under 40"	81	70	118	89	131	162	156	187	149	122	96	0	1,361	
40' to under 50'	22	14	41	27	60	51	61	50	24	26	28	0	404	
50' to under 60'	5	11	12	10	12	19	25	11	15	12	8	0	140	
60' to under 70'	9	7	13	16	19	12	13	11	13	17	16	0	146	
70' to under 80'	10	5	9	6	16	7	6	5	6	9	2	0	81	
80' to under 90'	2	0	0	0	0	0	0	0	0	0	0	0	2	
90' and greater	0	0	0	0	0	0	0	0	0	0	0	0	0	
Motorcycle w/Driver	8	15	16	14	45	43	56	38	42	9	47	0	333	
Motorcycle w/Commuter	14	10	47	37	59	73	109	67	57	77	6	0	556	
3-Wheel Vehicles	2	3	7	4	6	10	12	12	12	5	4	0	77	
<b>Monthly Vehicle Total</b>	<b>8,468</b>	<b>7,694</b>	<b>9,433</b>	<b>9,261</b>	<b>10,792</b>	<b>11,242</b>	<b>13,010</b>	<b>12,413</b>	<b>10,127</b>	<b>10,065</b>	<b>9,528</b>	<b>0</b>	<b>112,033</b>	
<b>Non-Exempt Total</b>														
<b>Monthly Non-Exempt Total</b>	<b>14,681</b>	<b>13,419</b>	<b>16,602</b>	<b>16,167</b>	<b>19,916</b>	<b>21,115</b>	<b>27,083</b>	<b>24,737</b>	<b>19,026</b>	<b>18,037</b>	<b>17,258</b>	<b>0</b>	<b>208,041</b>	<b>208,041</b>
<b>Exempt</b>														
Exempt Vehicles	51	152	223	188	254	342	468	335	180	213	141	0	2,547	<b>Total Exempt</b>
Exempt Passengers	0	0	0	0	0	0	0	0	0	0	0	0	0	
<b>Monthly Exempt Total</b>	<b>51</b>	<b>152</b>	<b>223</b>	<b>188</b>	<b>254</b>	<b>342</b>	<b>468</b>	<b>335</b>	<b>180</b>	<b>213</b>	<b>141</b>	<b>0</b>	<b>2,547</b>	
<b>Other - NOT INCLUDED</b>														
Cars Left Behind	193	105	244	338	581	1,011	1,969	910	700	452	274	0	6,777	
<b>Totals</b>	<b>14,732</b>	<b>13,571</b>	<b>16,825</b>	<b>16,355</b>	<b>20,170</b>	<b>21,457</b>	<b>27,551</b>	<b>25,072</b>	<b>19,206</b>	<b>18,250</b>	<b>17,399</b>	<b>0</b>	<b>210,588</b>	
Change from 2017	7.86%	5.14%	8.46%	3.74%	2.81%	5.70%	8.31%	3.05%	-4.47%	7.08%	9.68%		5.01%	

Pierce County Public Works & Utilities  
Airport and Ferry Division  
2702 South 42nd Street, Suite 201  
Tacoma, WA 98409

<b>Total Passengers</b>	<b>96,008</b>
<b>Total Vehicles</b>	<b>112,033</b>
<b>Total Exempt</b>	<b>2,547</b>
<b>Total Ridership</b>	<b>210,588</b>

# Pierce County Ferry - 2017 Ridership

## Anderson & Ketron Islands

Combined Islands	Jan-17 OUT	Feb-17 OUT	Mar-17 OUT	Apr-17 OUT	May-17 OUT	Jun-17 OUT	Jul-17 OUT	Aug-17 OUT	Sep-17 OUT	Oct-17 OUT	Nov-17 OUT	Dec-17 OUT	2017 TOTALS	
<b>Passengers</b>														
Adults	1,396	1,342	1,736	1,867	2,746	2,839	4,860	4,083	2,952	1,818	1,823	2,098	27,462	<b>Total Passengers</b>  <b>91,631</b>
Youth (Ages 6-18)	1,509	1,330	1,631	1,689	2,397	2,280	3,290	2,988	2,273	1,906	1,813	1,649	23,106	
Children (Under Age 6)	110	113	122	191	338	298	843	741	397	152	104	212	3,409	
Senior/Disabled Citizens	1,282	1,238	1,415	1,483	1,784	1,908	2,299	2,249	1,936	1,725	1,514	1,551	18,833	
Commuter Passengers	1,533	1,393	1,675	1,598	1,860	1,820	1,793	1,884	1,755	1,819	1,691	1,759	18,821	
<b>Monthly Passenger Total</b>	<b>5,830</b>	<b>5,416</b>	<b>6,579</b>	<b>6,828</b>	<b>9,125</b>	<b>9,145</b>	<b>13,085</b>	<b>11,945</b>	<b>9,313</b>	<b>7,420</b>	<b>6,945</b>	<b>7,269</b>	<b>91,631</b>	
<b>Vehicles</b>														
Up to 21' and Driver	1,579	1,509	1,950	2,218	2,669	2,786	4,149	3,574	2,849	1,988	1,893	2,260	27,164	<b>Total Vehicles</b>  <b>106,517</b>
Up to 21' and Sr/Disabled	720	654	866	899	963	998	1,144	1,171	985	847	817	860	10,064	
Up to 21' and Commuter	5,208	4,953	5,647	5,283	6,193	6,583	6,301	6,767	6,169	6,118	5,689	5,768	64,911	
Over 21' to under 30'	108	97	158	147	128	79	114	132	135	92	108	111	1,298	
30' to under 40"	68	78	104	106	130	139	167	184	127	119	101	89	1,323	
40' to under 50'	14	19	20	26	34	107	53	45	28	39	24	24	409	
50' to under 60'	10	8	8	17	16	32	13	17	25	18	19	5	183	
60' to under 70'	14	10	12	12	15	22	27	16	27	14	9	7	178	
70' to under 80'	3	1	6	2	3	12	5	6	8	12	2	5	60	
80' to under 90'	0	0	0	0	0	3	0	0	0	0	0	0	3	
90' and greater	0	0	0	0	0	0	0	2	0	0	0	0	2	
Motorcycle w/Driver	8	5	9	16	33	28	62	51	55	14	7	2	288	
Motorcycle w/Commuter	35	23	31	27	65	88	87	96	70	49	30	20	601	
3-Wheel Vehicles	0	0	0	0	0	3	6	5	11	7	1	4	33	
<b>Monthly Vehicle Total</b>	<b>7,767</b>	<b>7,357</b>	<b>8,811</b>	<b>8,753</b>	<b>10,249</b>	<b>10,880</b>	<b>12,128</b>	<b>12,066</b>	<b>10,489</b>	<b>9,317</b>	<b>8,700</b>	<b>9,155</b>	<b>106,517</b>	
<b>Non-Exempt Total</b>	<b>0</b>	<b>0</b>	<b>0</b>	<b>0</b>	<b>0</b>	<b>0</b>	<b>0</b>	<b>0</b>	<b>0</b>	<b>0</b>	<b>0</b>	<b>0</b>	<b>0</b>	
<b>Monthly Non-Exempt Total</b>	<b>13,597</b>	<b>12,773</b>	<b>15,390</b>	<b>15,581</b>	<b>19,374</b>	<b>20,025</b>	<b>25,213</b>	<b>24,011</b>	<b>19,802</b>	<b>16,737</b>	<b>15,645</b>	<b>16,424</b>	<b>198,148</b>	<b>198,148</b>
<b>Exempt</b>	<b>0</b>	<b>0</b>	<b>0</b>	<b>0</b>	<b>0</b>	<b>0</b>	<b>0</b>	<b>0</b>	<b>0</b>	<b>0</b>	<b>0</b>	<b>0</b>	<b>0</b>	
Exempt Vehicles	62	134	122	184	245	274	223	319	303	307	218	189	2,391	<b>Total Exempt</b>  <b>2,391</b>
Exempt Passengers	0	0	0	0	0	0	0	0	0	0	0	0	0	
<b>Monthly Exempt Total</b>	<b>62</b>	<b>134</b>	<b>122</b>	<b>184</b>	<b>245</b>	<b>274</b>	<b>223</b>	<b>319</b>	<b>303</b>	<b>307</b>	<b>218</b>	<b>189</b>	<b>2,391</b>	
<b>Other - NOT INCLUDED</b>														
Cars Left Behind	0	0	45	72	248	444	1,350	605	407	95	147	243	3,413	
<b>Totals</b>	<b>13,659</b>	<b>12,907</b>	<b>15,512</b>	<b>15,765</b>	<b>19,619</b>	<b>20,299</b>	<b>25,436</b>	<b>24,330</b>	<b>20,105</b>	<b>17,044</b>	<b>15,863</b>	<b>16,613</b>	<b>217,152</b>	
Change from 2016	5.71%	18.58%	7.77%	2.79%	11.31%	17.40%	29.23%	11.35%	13.15%	22.96%	11.57%	7.43%	13.52%	

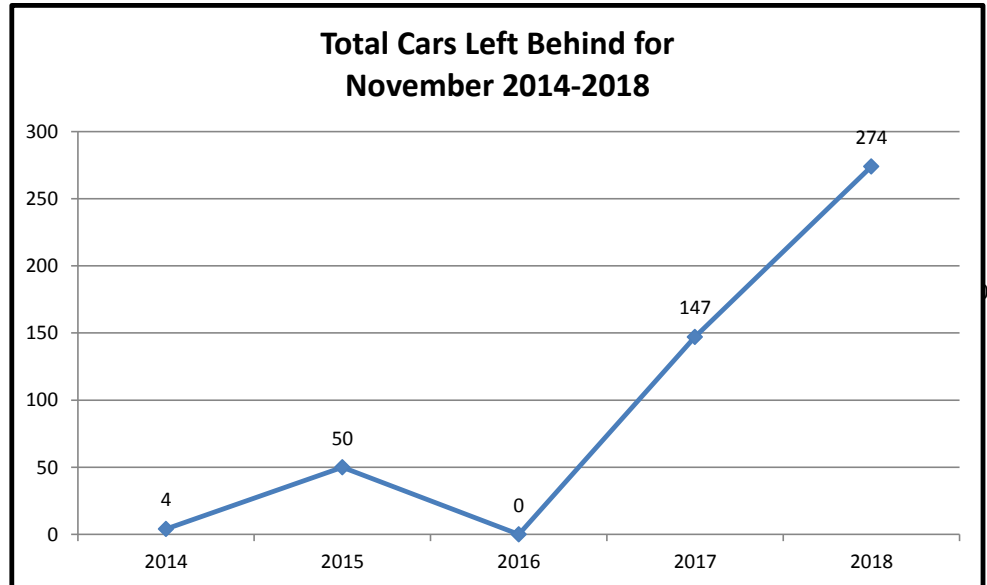
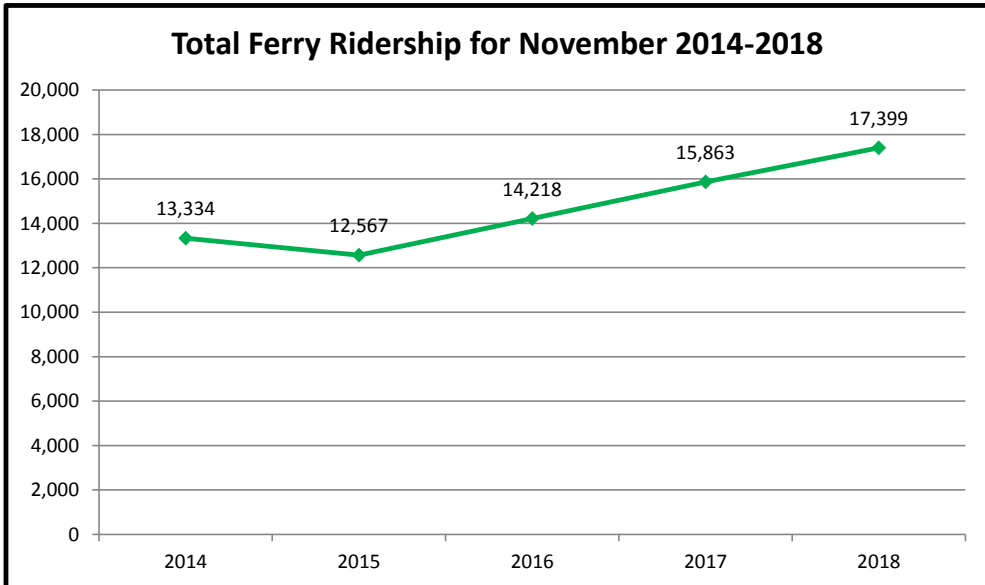
Pierce County Public Works & Utilities  
 Airport and Ferry Division  
 2702 South 42nd Street, Suite 201  
 Tacoma, WA 98409

<b>Total Passengers</b>	<b>98,900</b>
<b>Total Vehicles</b>	<b>115,672</b>
<b>Total Exempt</b>	<b>2,580</b>
<b>Total Ridership</b>	<b>217,152</b>

## Pierce County Ferry - 2014 to 2018 Monthly Ridership For the Month of November

Combined Islands	2014	2015	2016	2017	2018	2014-2018 AVERAGES
<b>Passengers</b>						
Monthly Passenger Total	6,040	5,818	6,369	6,945	7,730	6,580
<b>Vehicles</b>						
Monthly Vehicle Total	7,286	6,722	7,822	8,700	9,528	8,012
<b>Exempt</b>						
Monthly Exempt Total	8	27	27	218	141	84
<b>Other - NOT INCLUDED</b>						
Monthly Cars Left Behind	4	50	0	147	274	95
<b>Totals</b>	<b>13,334</b>	<b>12,567</b>	<b>14,218</b>	<b>15,863</b>	<b>17,399</b>	<b>14,676</b>

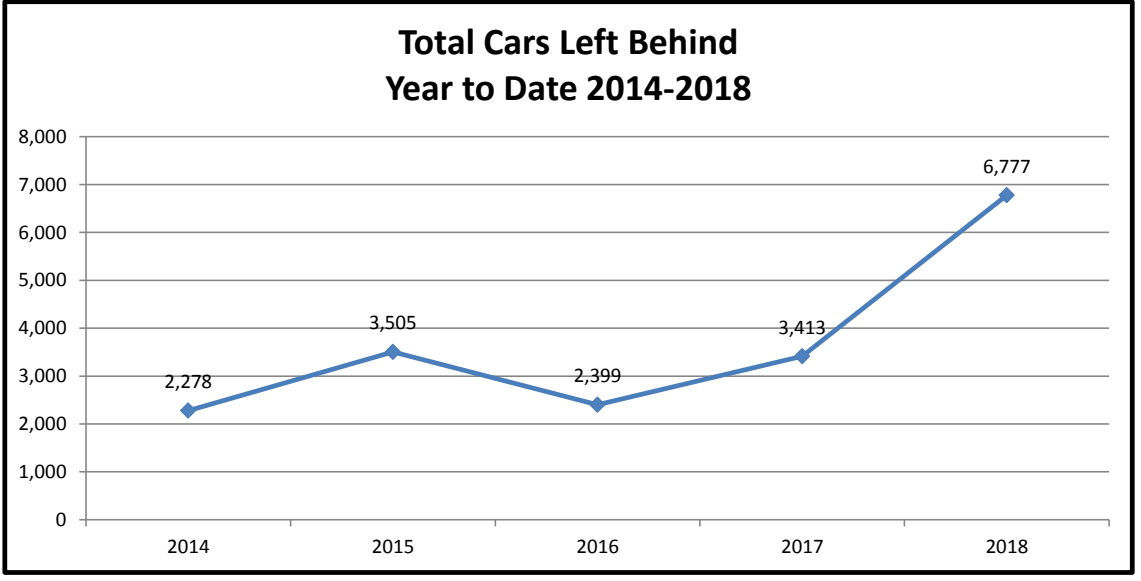
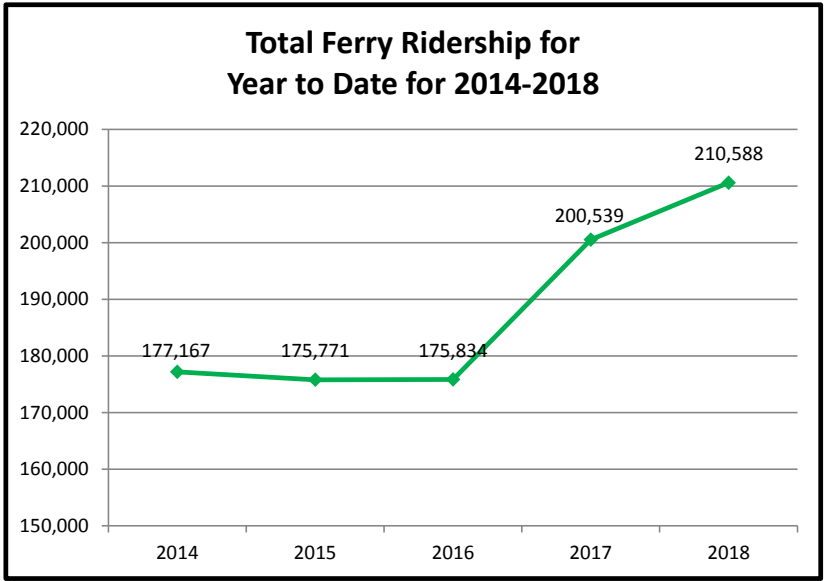
**Anderson & Ketron  
Islands**



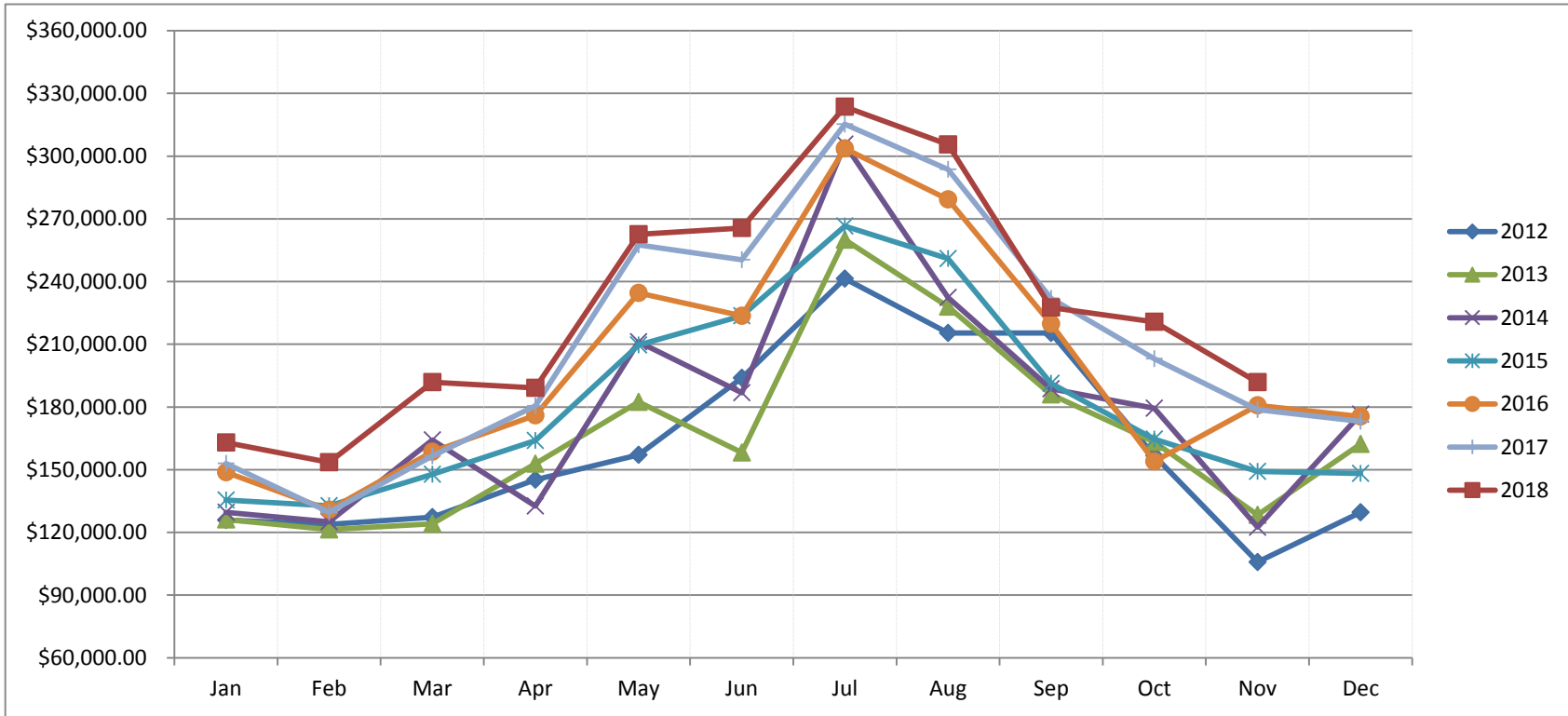
## Pierce County Ferry 2014 - 2018 Year to Date Totals Through November

Combined Islands	2014	2015	2016	2017	2018	2014-2018 AVERAGES
<b>Passengers</b>						
YTD Passenger Total	82,891	83,086	82,367	91,631	96,008	87,197
<b>Vehicles</b>						
YTD Vehicle Total	94,253	92,293	93,181	106,517	112,033	99,655
<b>Exempt</b>						
YTD Exempt Total	23	392	286	2,391	2,547	1,128
<b>Other - NOT INCLUDED</b>						
Cars Left Behind	2,278	3,505	2,399	3,413	6,777	3,674
<b>Totals</b>	<b>177,167</b>	<b>175,771</b>	<b>175,834</b>	<b>200,539</b>	<b>210,588</b>	<b>187,980</b>

**Anderson & Ketron  
Island**



## Pierce County Ferry System Ticket Sales by Month 2012-2018



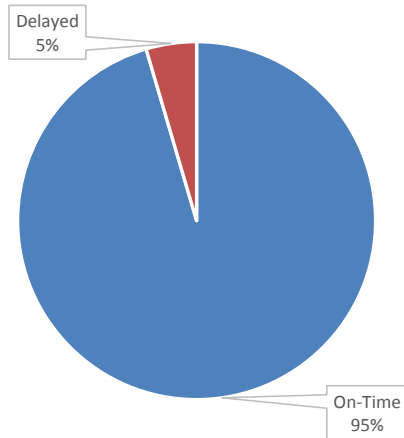
Month	2012	2013	2014	2015	2016	2017	2018
Jan	\$ 125,848.85	\$ 126,194.90	\$ 129,625.00	\$ 135,455.00	\$ 148,753.95	\$ 152,936.35	\$ 163,007.30
Feb	\$ 123,887.79	\$ 121,360.59	\$ 125,146.00	\$ 132,736.00	\$ 130,783.20	\$ 129,663.00	\$ 153,516.00
Mar	\$ 127,252.61	\$ 124,175.22	\$ 164,208.00	\$ 147,762.00	\$ 158,542.65	\$ 156,493.00	\$ 191,868.19
Apr	\$ 145,252.73	\$ 152,858.25	\$ 132,604.00	\$ 163,957.70	\$ 176,019.27	\$ 180,457.00	\$ 189,160.92
May	\$ 157,053.75	\$ 182,381.05	\$ 211,172.00	\$ 209,581.63	\$ 234,493.20	\$ 257,589.00	\$ 262,604.70
Jun	\$ 193,894.85	\$ 158,264.21	\$ 186,820.00	\$ 223,529.80	\$ 223,570.55	\$ 250,428.00	\$ 265,570.00
Jul	\$ 241,410.40	\$ 260,026.00	\$ 305,702.00	\$ 266,512.69	\$ 303,626.22	\$ 315,273.00	\$ 323,590.00
Aug	\$ 215,443.45	\$ 227,964.00	\$ 232,362.00	\$ 250,957.44	\$ 279,322.38	\$ 293,666.00	\$ 305,517.00
Sep	\$ 215,426.75	\$ 185,973.00	\$ 188,716.00	\$ 191,350.91	\$ 219,709.25	\$ 232,005.00	\$ 227,613.00
Oct	\$ 156,719.16	\$ 163,319.00	\$ 179,409.00	\$ 164,579.42	\$ 153,994.35	\$ 203,140.00	\$ 220,739.00
Nov	\$ 105,860.25	\$ 128,319.00	\$ 122,535.00	\$ 149,226.31	\$ 180,780.35	\$ 178,766.00	\$ 191,804.00
Dec	\$ 129,639.40	\$ 162,283.00	\$ 176,474.00	\$ 148,272.10	\$ 175,444.45	\$ 173,176.00	
Totals	\$ 1,937,689.99	\$ 1,993,118.22	\$ 2,154,773.00	\$ 2,183,921.00	\$ 2,385,039.82	\$ 2,523,592.35	\$ 2,494,990.11

### Ferry On-Time / Delay Report

Total On-Time Departure	Total Delayed Departure	Total Ferry Runs	On-Time Percentage
880	42	922	95.4%

Delay by Reason	Number of Delays
Full Load	6
Train	18
Weather	3
Scheduled Ketron	15

#### On-Time/Delay Percentage



#### Delay Distribution

