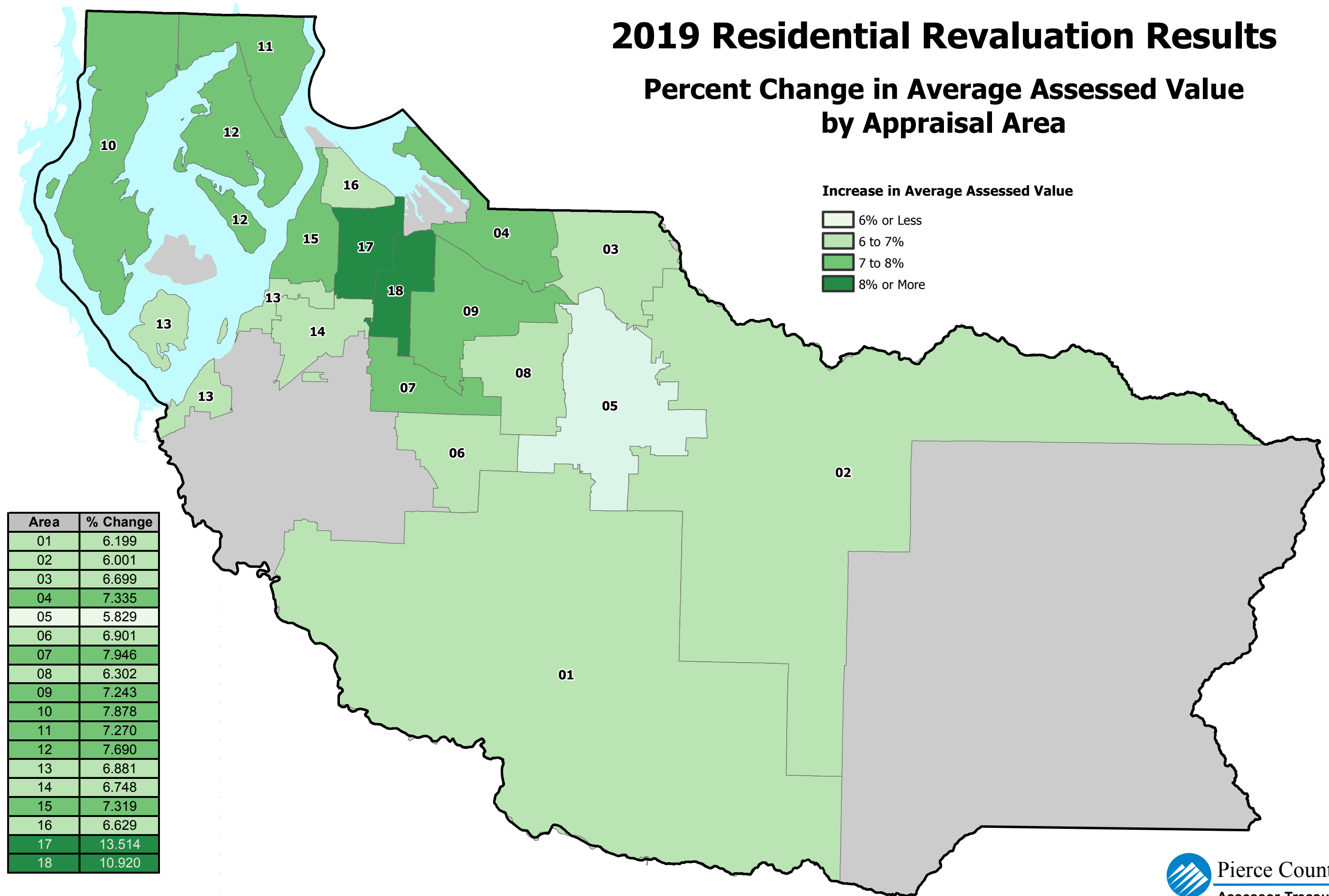


2019 Residential Revaluation Results

Percent Change in Average Assessed Value by Appraisal Area



Area	% Change
01	6.199
02	6.001
03	6.699
04	7.335
05	5.829
06	6.901
07	7.946
08	6.302
09	7.243
10	7.878
11	7.270
12	7.690
13	6.881
14	6.748
15	7.319
16	6.629
17	13.514
18	10.920